

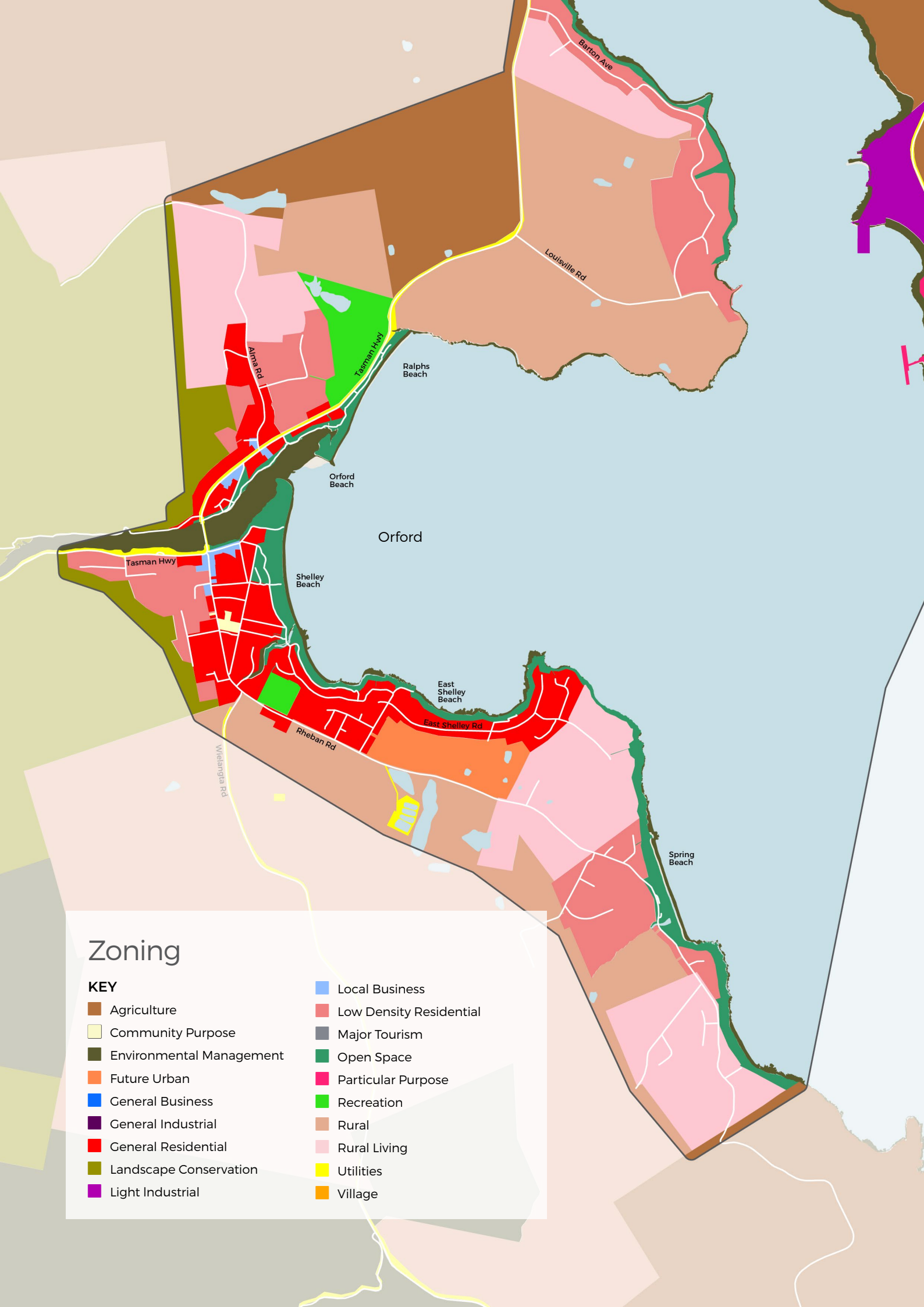
Study area





Existing conditions

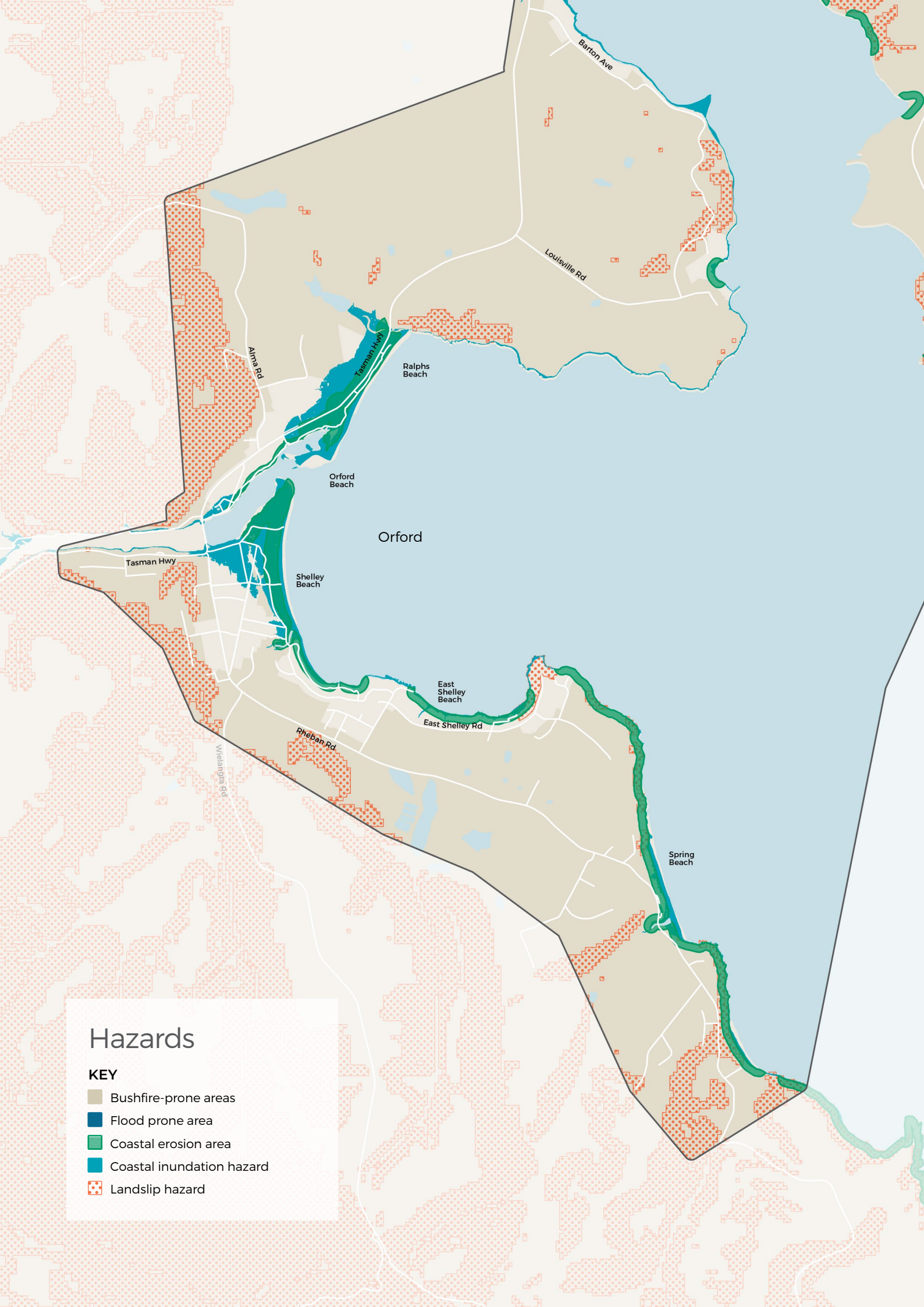




## Zoning






### KEY

- |                          |                         |
|--------------------------|-------------------------|
| Agriculture              | Local Business          |
| Community Purpose        | Low Density Residential |
| Environmental Management | Major Tourism           |
| Future Urban             | Open Space              |
| General Business         | Particular Purpose      |
| General Industrial       | Recreation              |
| General Residential      | Rural                   |
| Landscape Conservation   | Rural Living            |
| Light Industrial         | Utilities               |
|                          | Village                 |

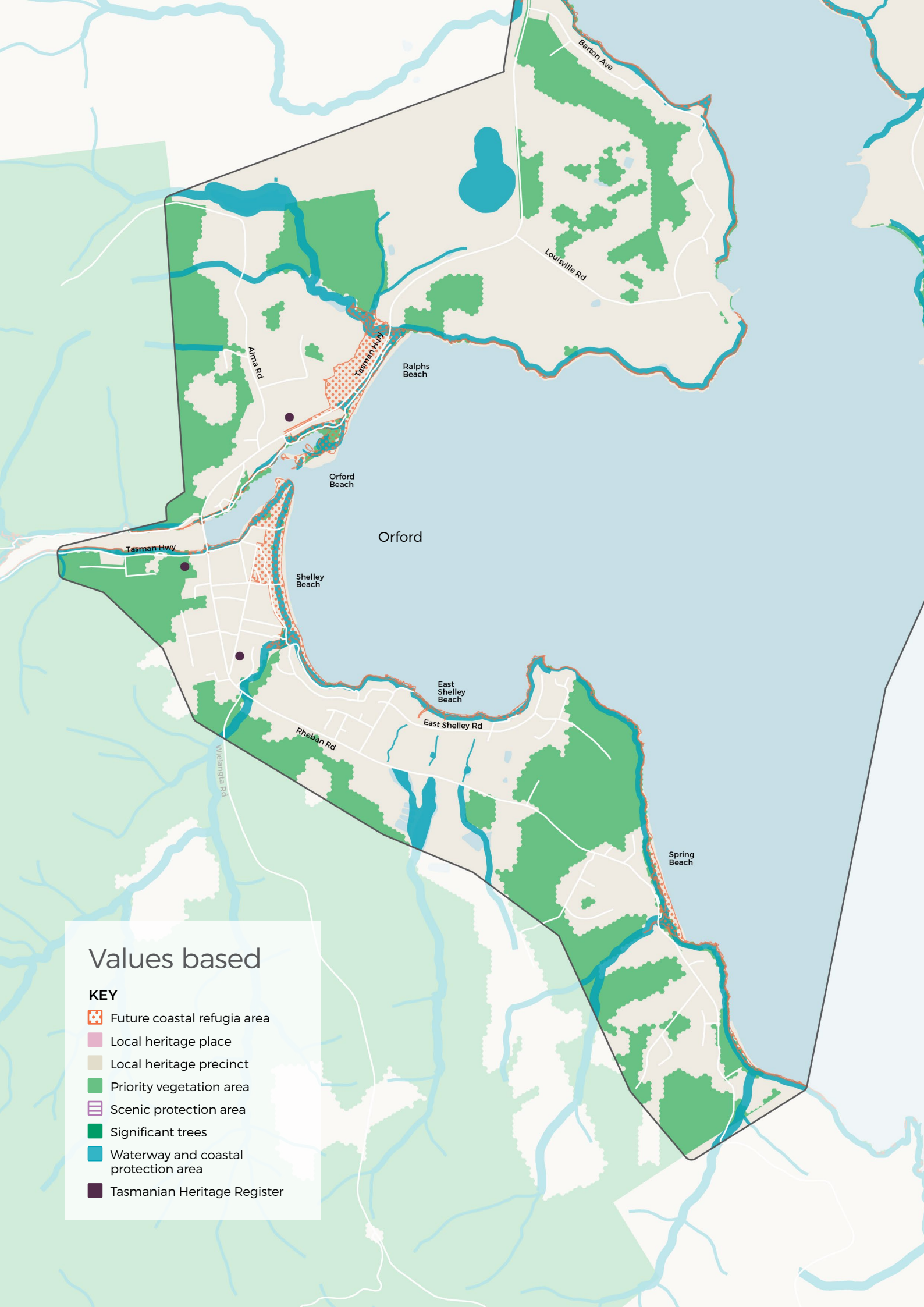


## Hazards

### KEY

-  Bushfire-prone areas
-  Flood prone area
-  Coastal erosion area
-  Coastal inundation hazard
-  Landslip hazard

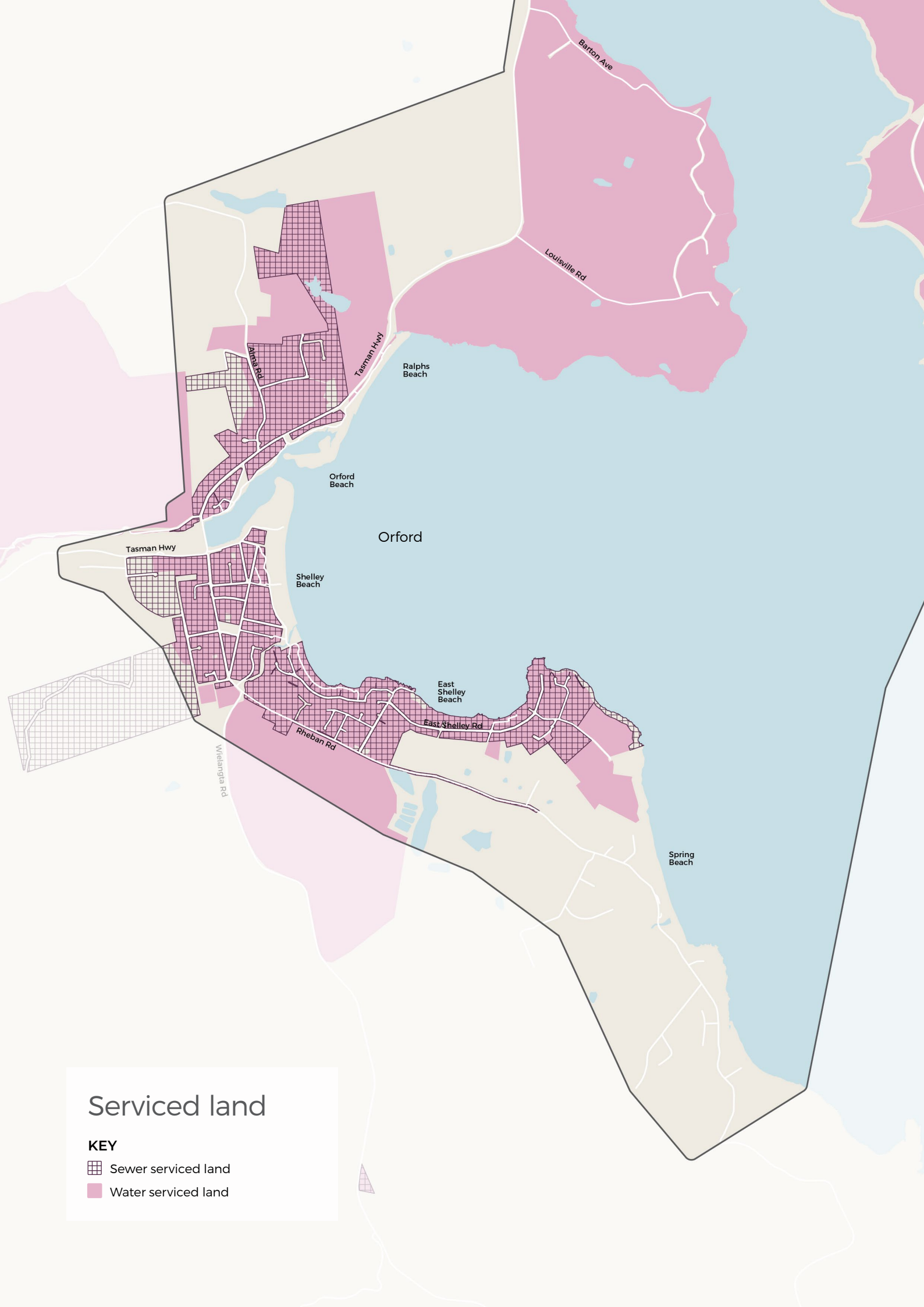




## Values based



### KEY

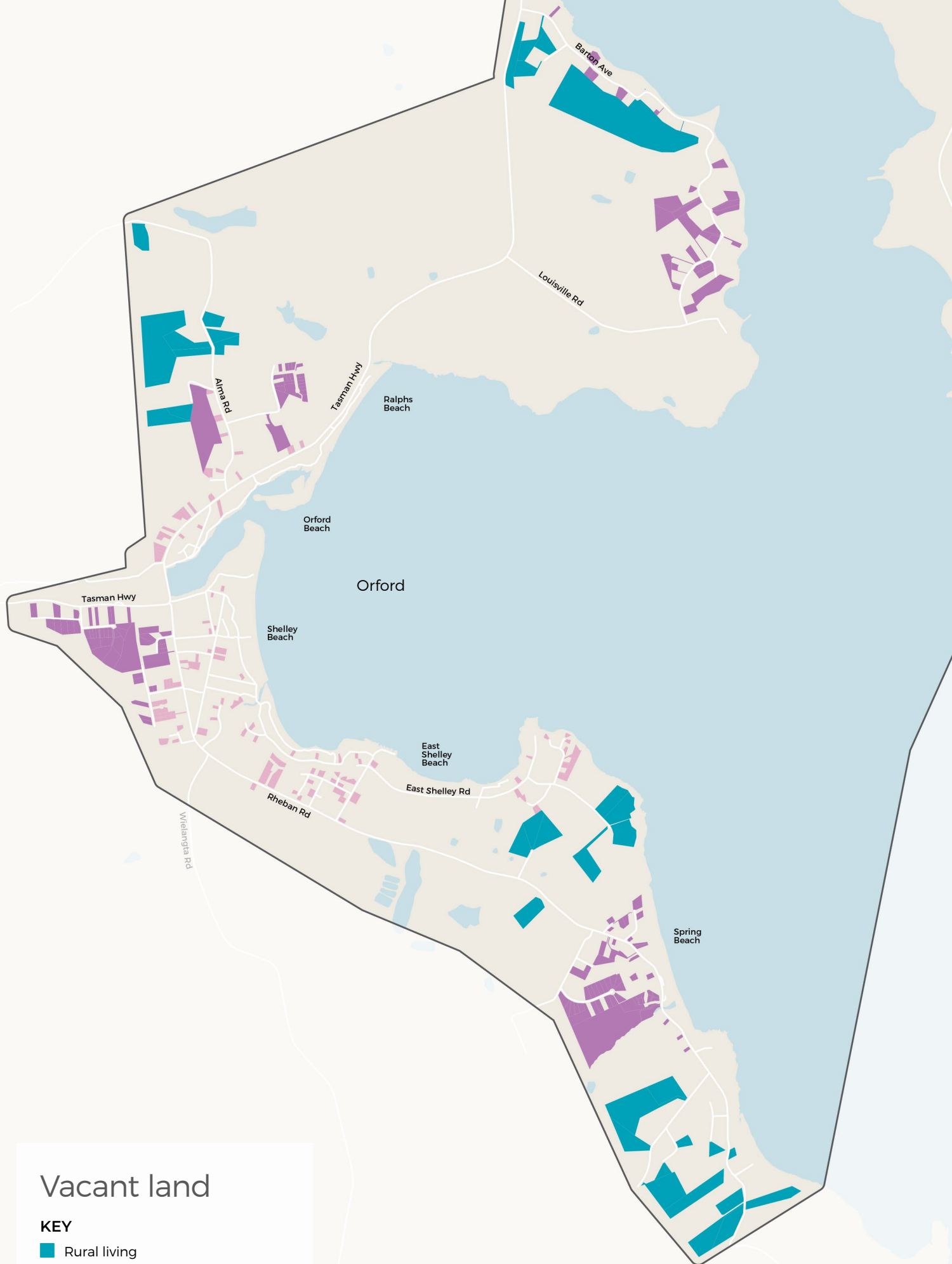
-  Future coastal refugia area
-  Local heritage place
-  Local heritage precinct
-  Priority vegetation area
-  Scenic protection area
-  Significant trees
-  Waterway and coastal protection area
-  Tasmanian Heritage Register



## Serviced land

### KEY

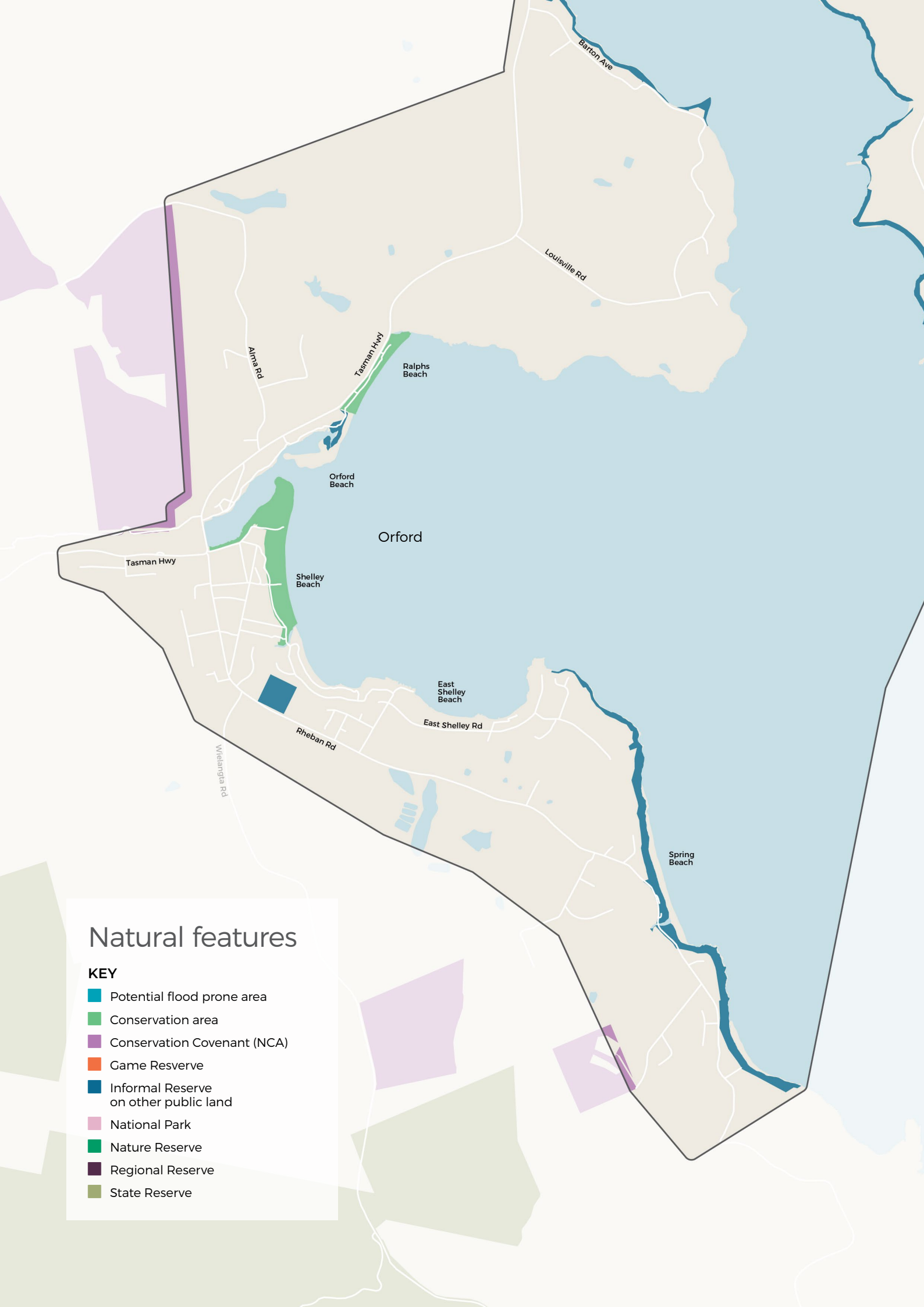
-  Sewer serviced land
-  Water serviced land



## Vacant land

### KEY

- Rural living
- Low density residential
- General residential

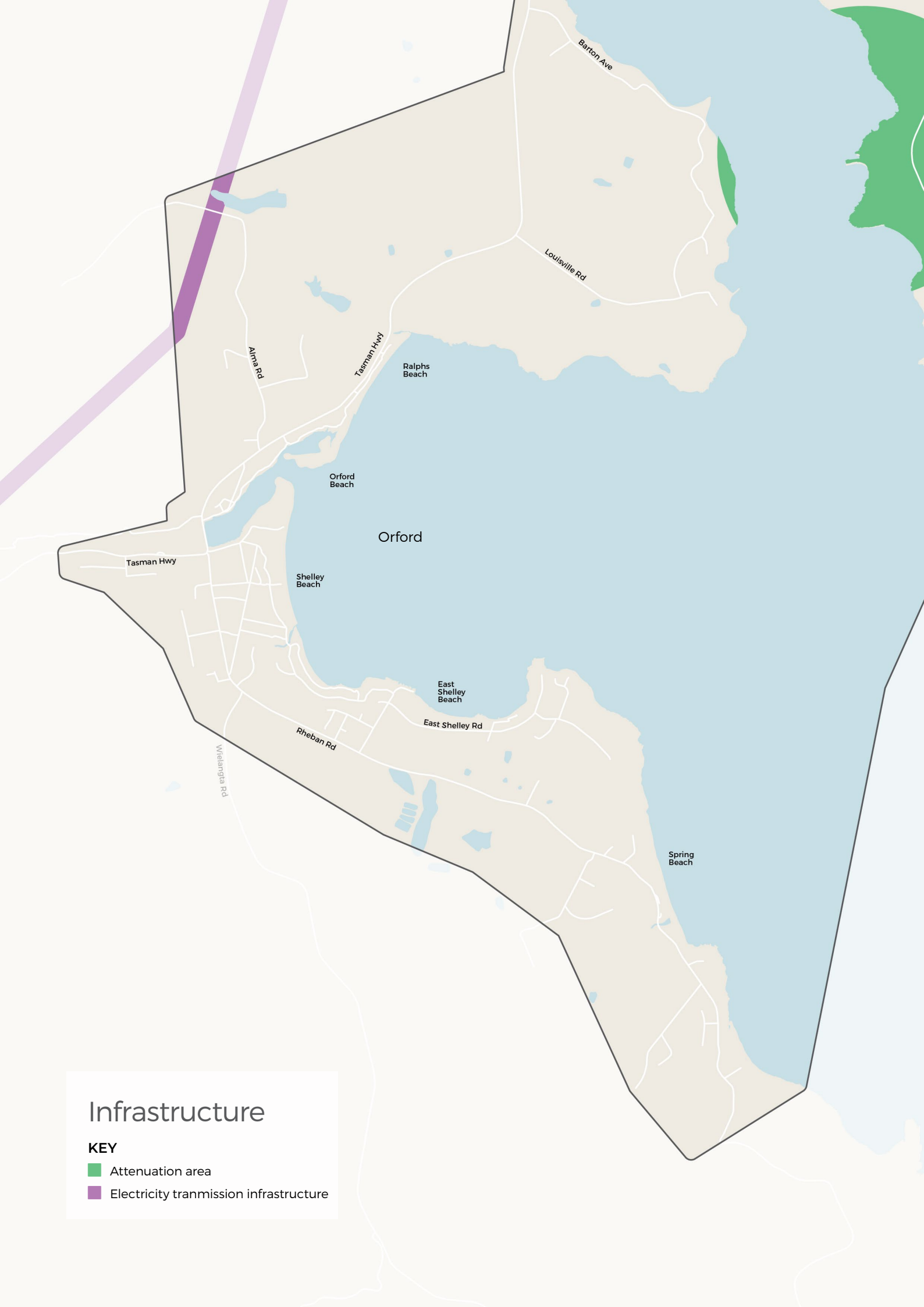


## Natural features

### KEY

- Potential flood prone area
- Conservation area
- Conservation Covenant (NCA)
- Game Reserve
- Informal Reserve on other public land
- National Park
- Nature Reserve
- Regional Reserve
- State Reserve





# Infrastructure

## KEY

- Attenuation area
- Electricity transmission infrastructure