



Swan River Rd

Dolphin Sands Rd

Cambria Dr

Meredjths River

Tasman Hwy

Maria St

Victoria St

Waterloo Beach

Waterloo Point

Swansea Beach

Gordon St

Swansea

Cathcart St

Maysons Bluff

Tasman Hwy

Stony River

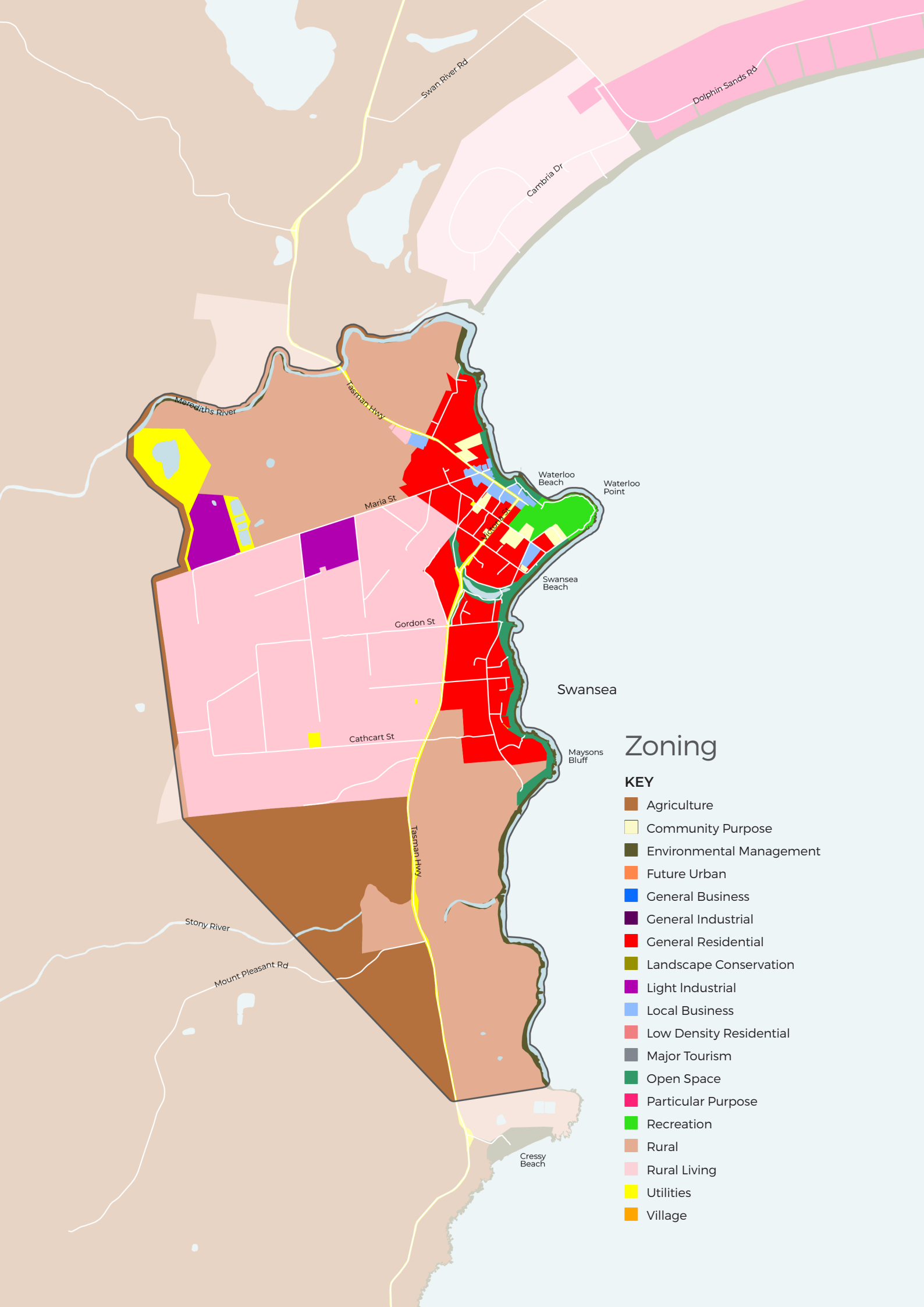
Mount Pleasant Rd

Cressy Beach

Study areas



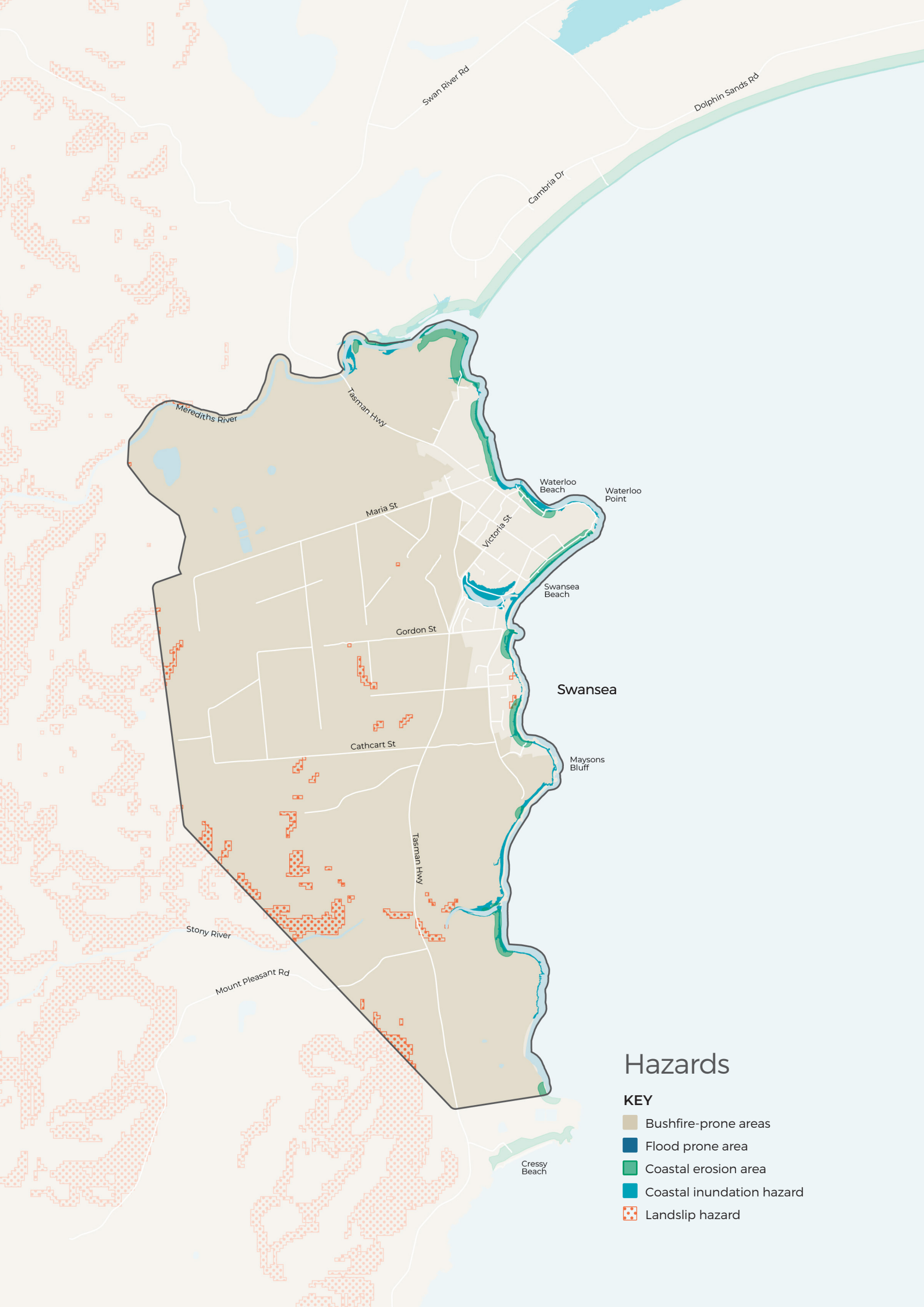
Existing conditions



Zoning

KEY

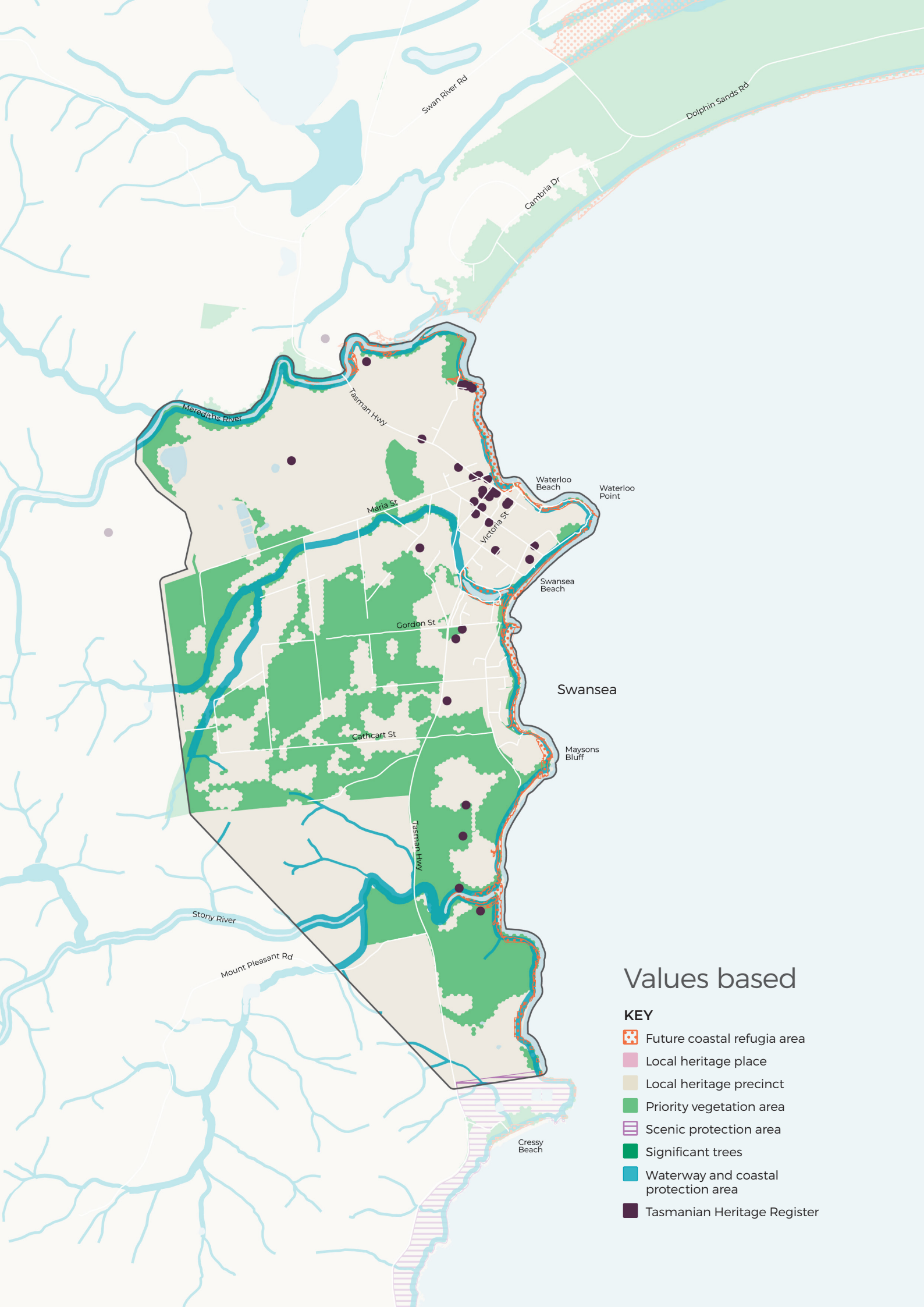
- Agriculture
- Community Purpose
- Environmental Management
- Future Urban
- General Business
- General Industrial
- General Residential
- Landscape Conservation
- Light Industrial
- Local Business
- Low Density Residential
- Major Tourism
- Open Space
- Particular Purpose
- Recreation
- Rural
- Rural Living
- Utilities
- Village











Hazards

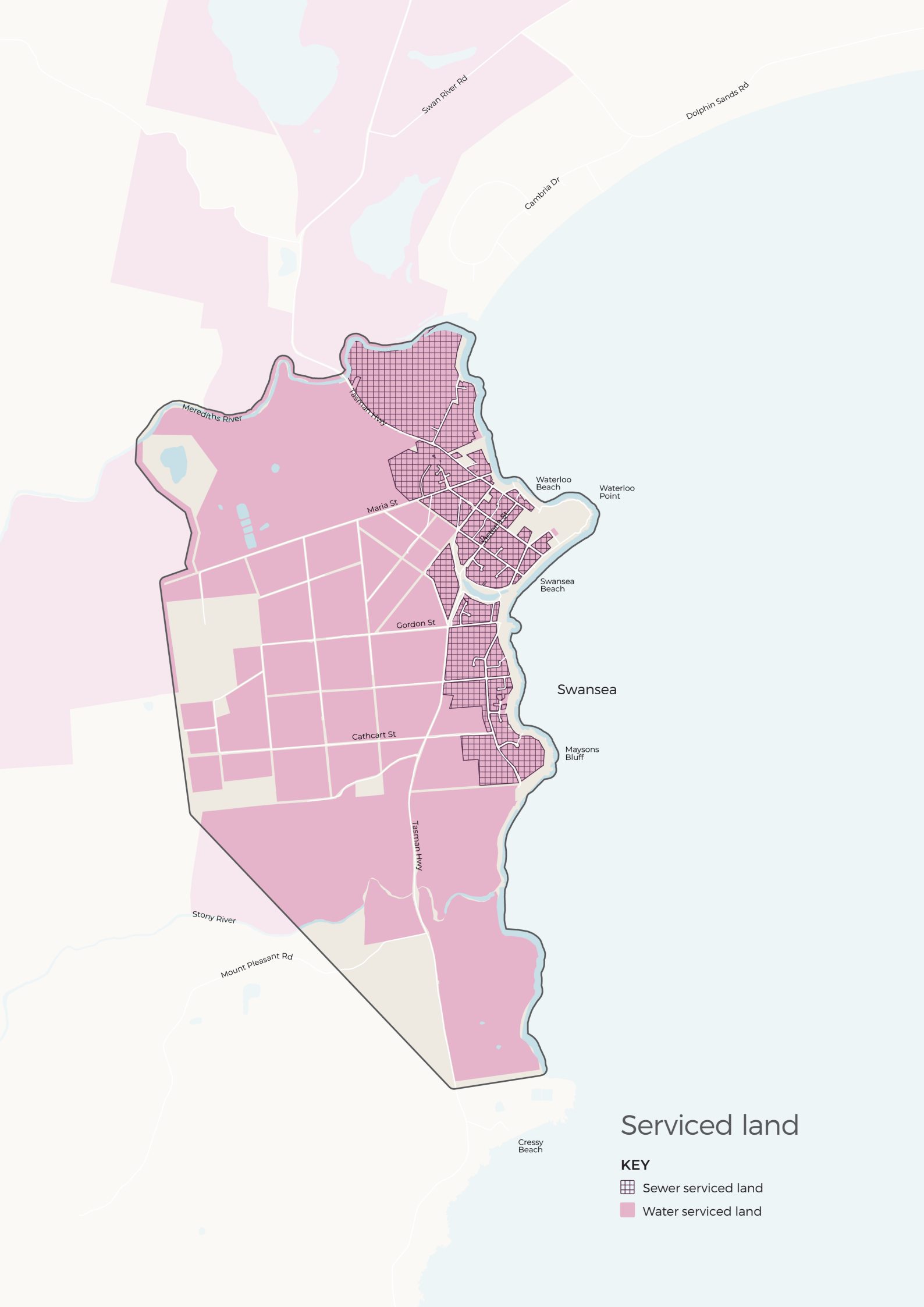
KEY

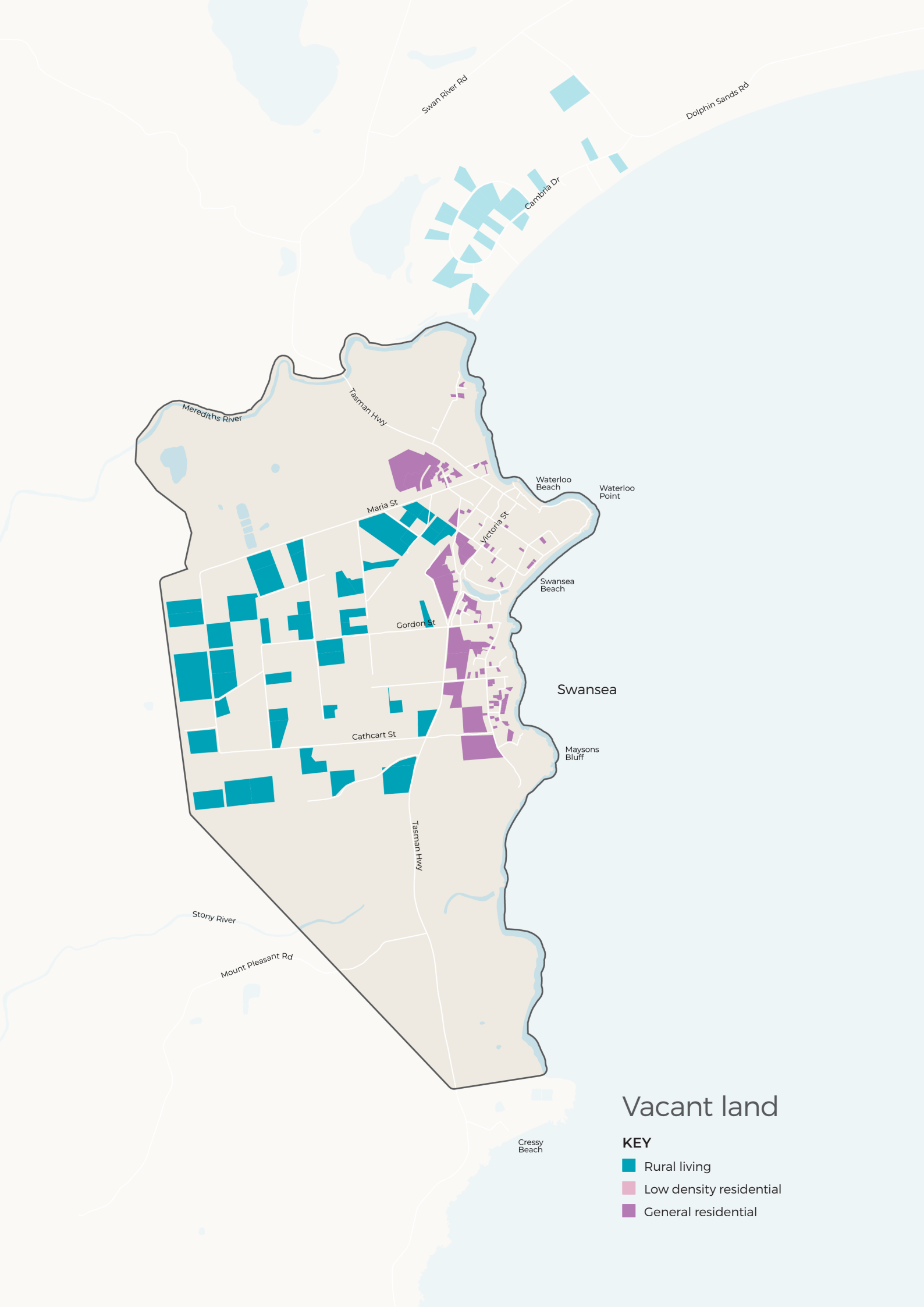
- Bushfire-prone areas
- Flood prone area
- Coastal erosion area
- Coastal inundation hazard
- Landslip hazard



Values based

- KEY**
-  Future coastal refugia area
 -  Local heritage place
 -  Local heritage precinct
 -  Priority vegetation area
 -  Scenic protection area
 -  Significant trees
 -  Waterway and coastal protection area
 -  Tasmanian Heritage Register

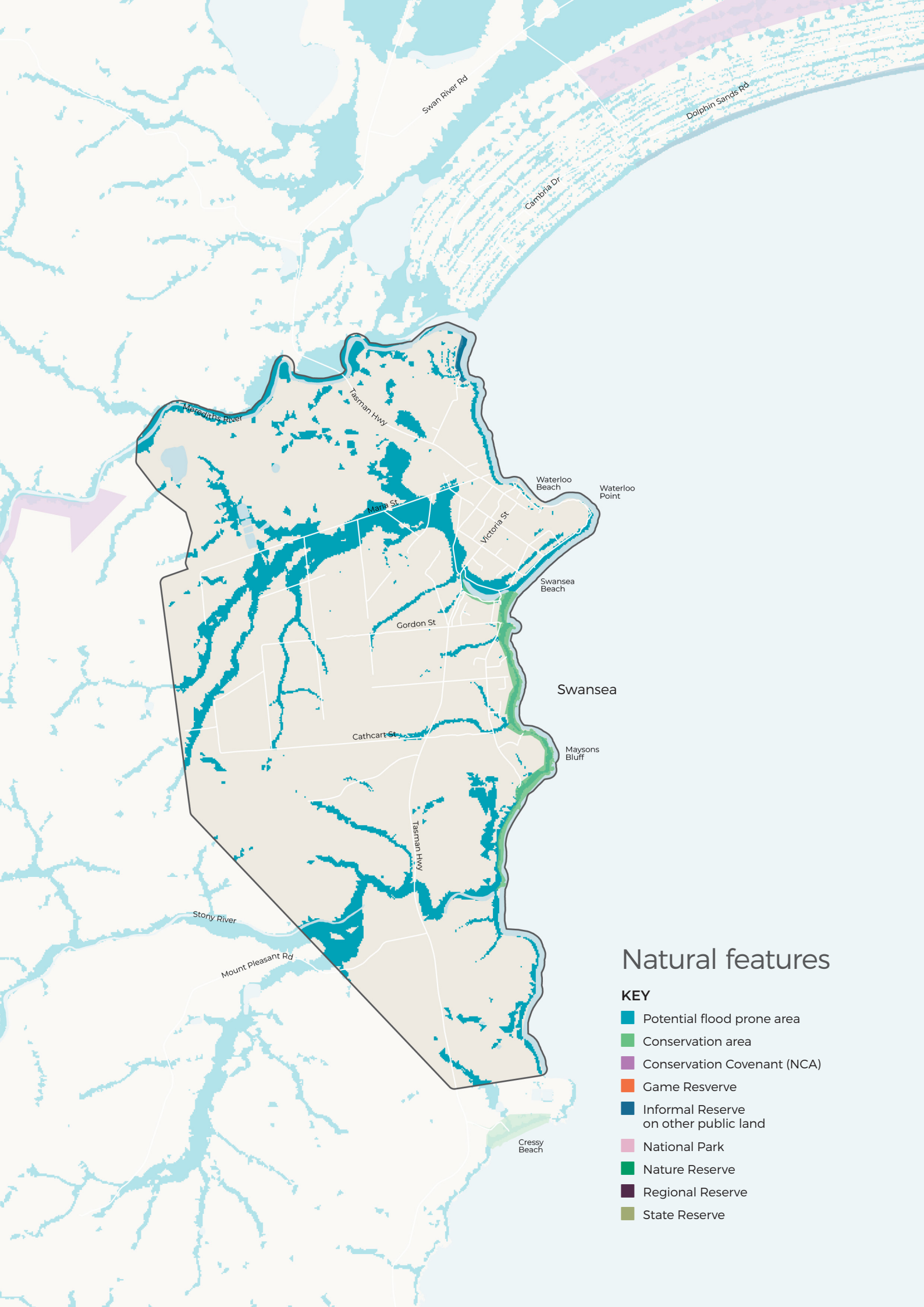




Vacant land

KEY

- Rural living
- Low density residential
- General residential



Natural features

KEY

- Potential flood prone area
- Conservation area
- Conservation Covenant (NCA)
- Game Reserve
- Informal Reserve on other public land
- National Park
- Nature Reserve
- Regional Reserve
- State Reserve