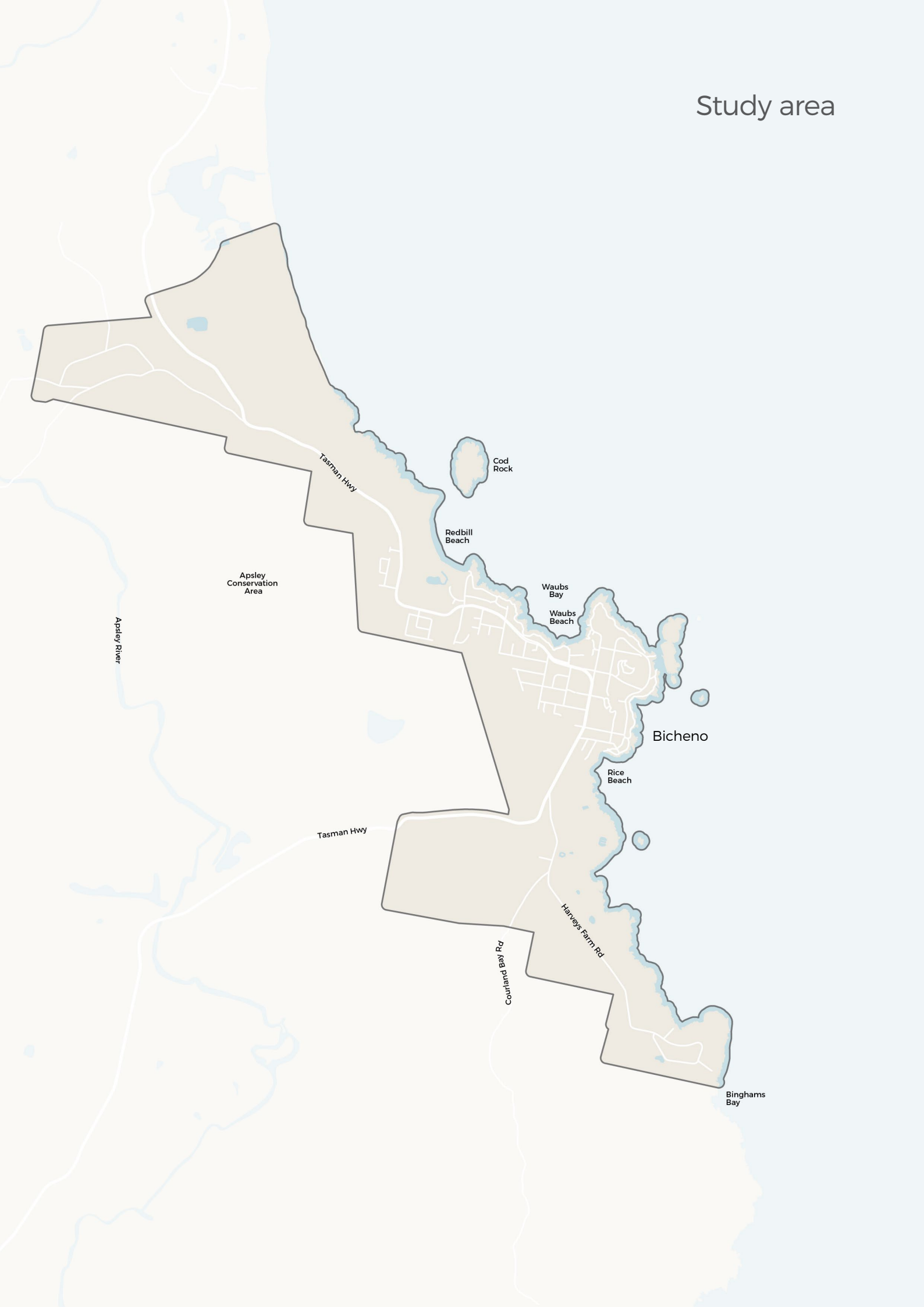


Study area



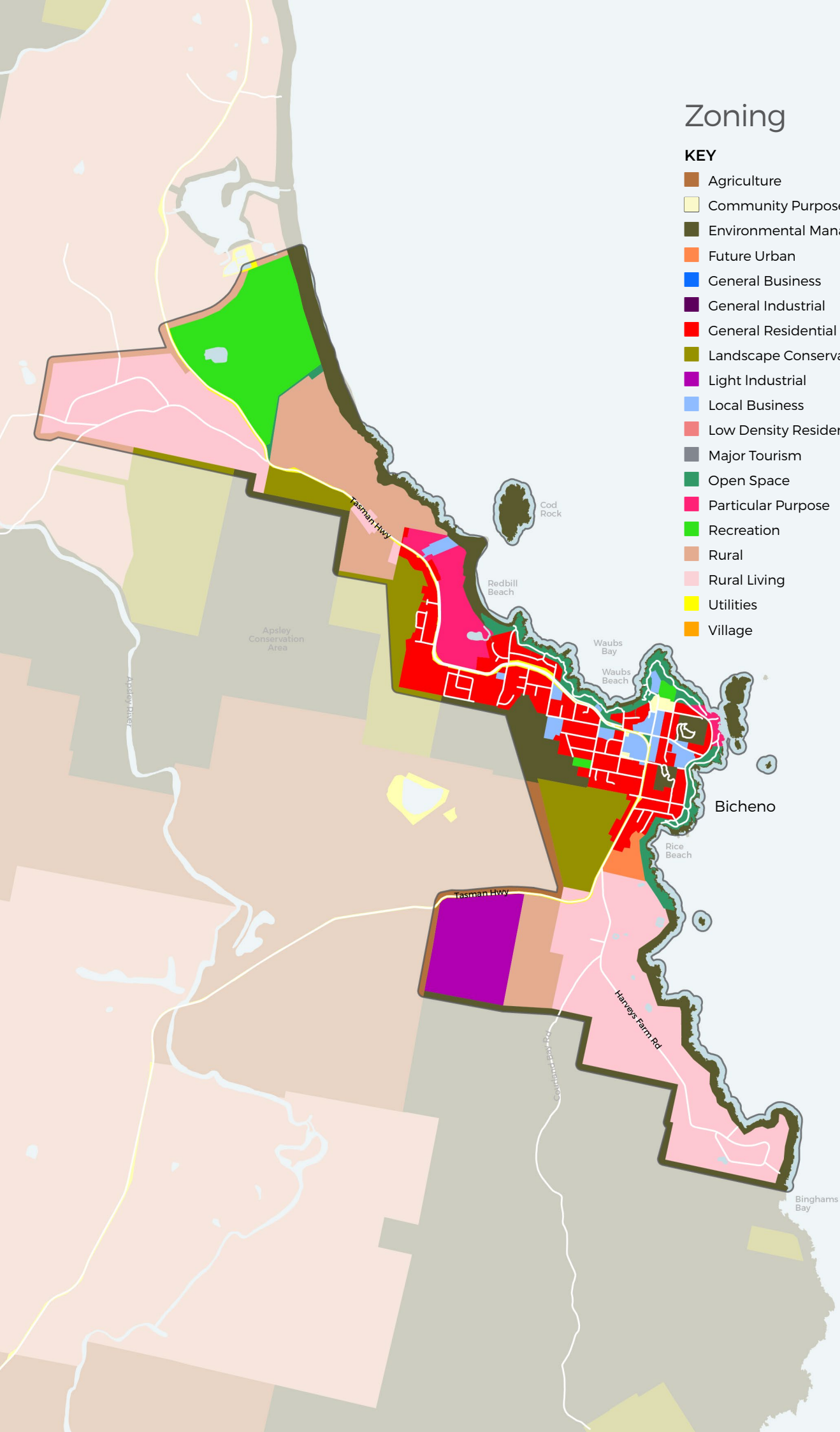
Existing conditions



Zoning

KEY

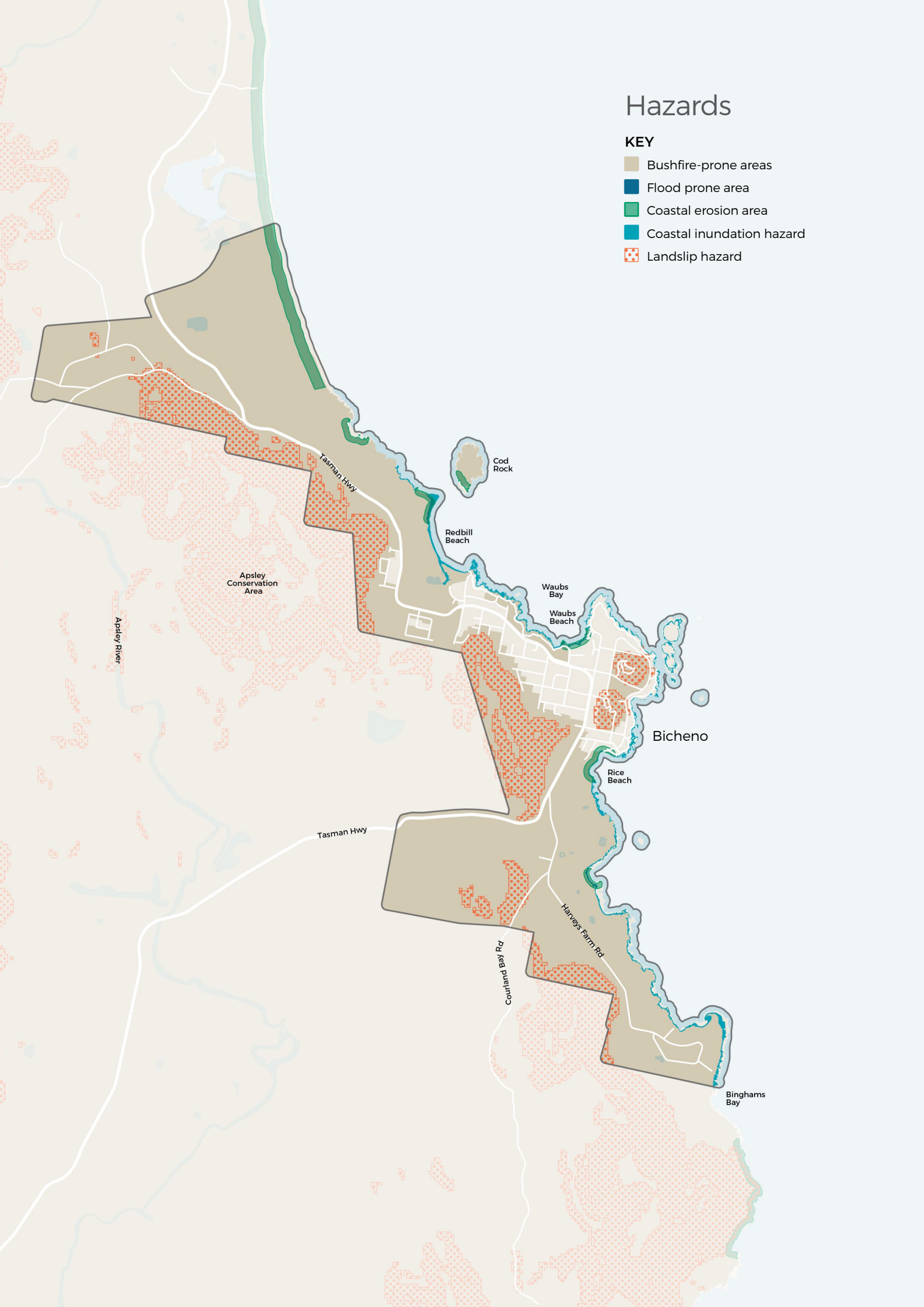
- Agriculture
- Community Purpose
- Environmental Management
- Future Urban
- General Business
- General Industrial
- General Residential
- Landscape Conservation
- Light Industrial
- Local Business
- Low Density Residential
- Major Tourism
- Open Space
- Particular Purpose
- Recreation
- Rural
- Rural Living
- Utilities
- Village



Hazards



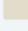



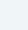

KEY

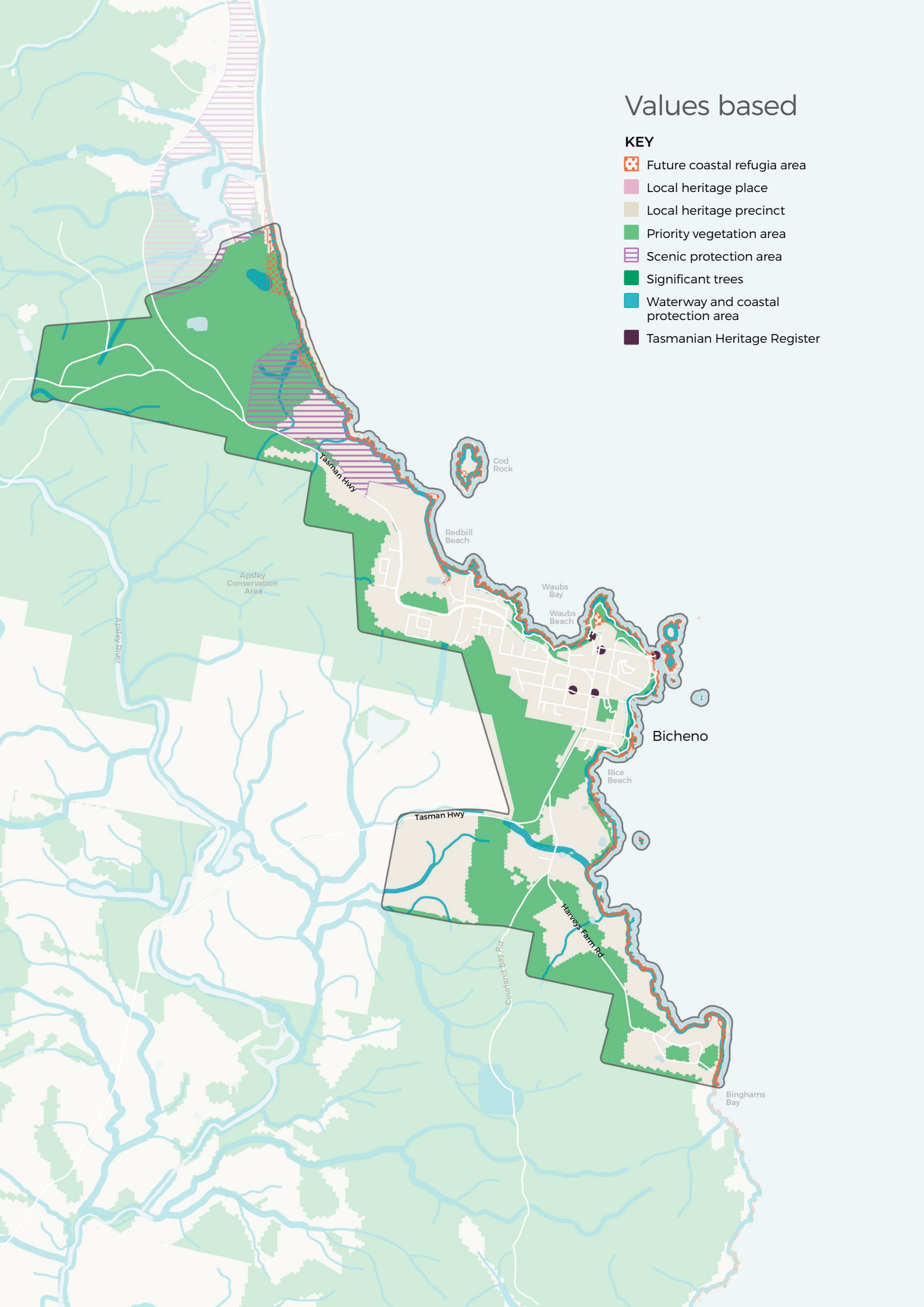
- Bushfire-prone areas
- Flood prone area
- Coastal erosion area
- Coastal inundation hazard
- Landslip hazard



Values based


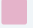
KEY

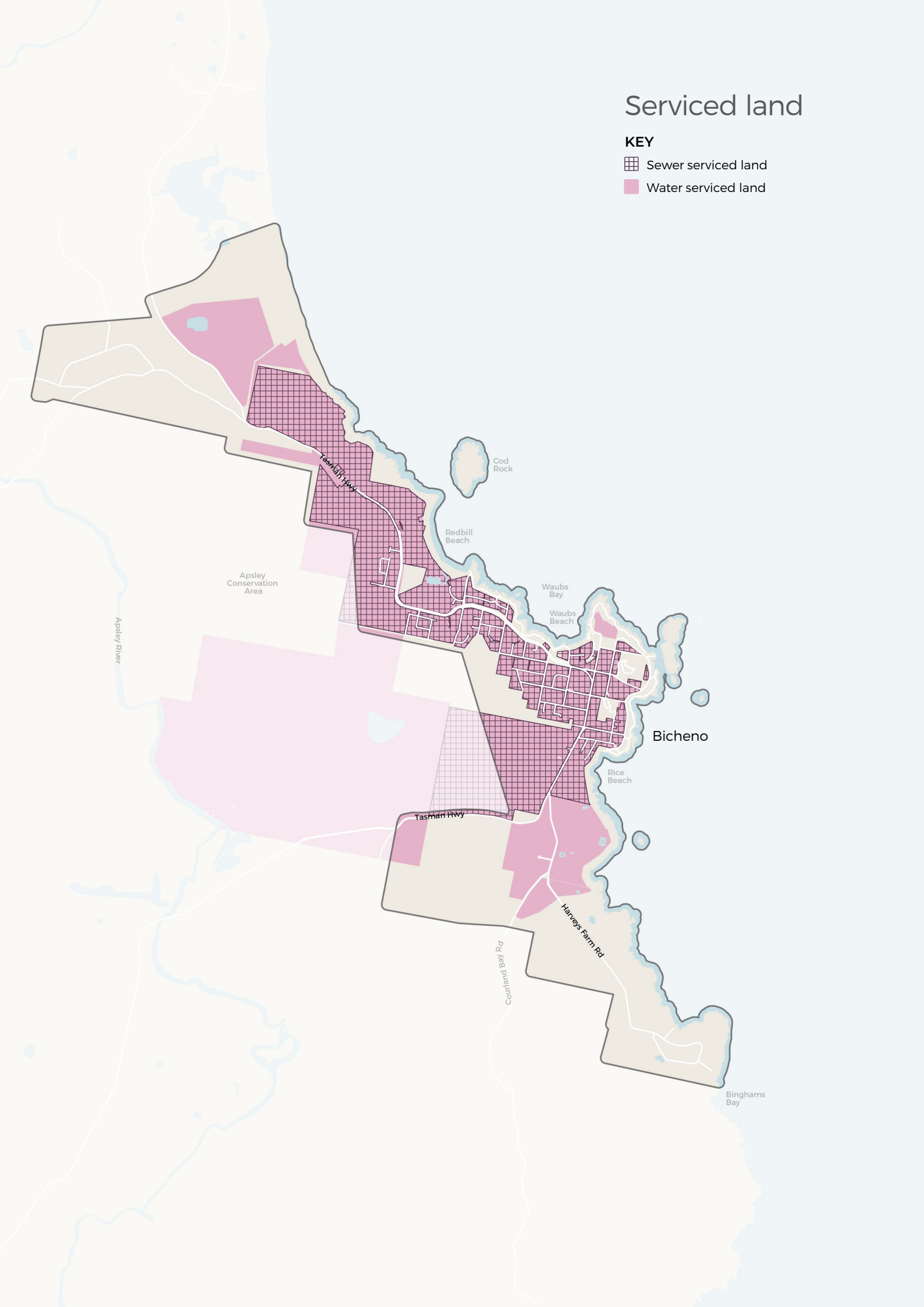
-  Future coastal refugia area
-  Local heritage place
-  Local heritage precinct
-  Priority vegetation area
-  Scenic protection area
-  Significant trees
-  Waterway and coastal protection area
-  Tasmanian Heritage Register



Serviced land

KEY

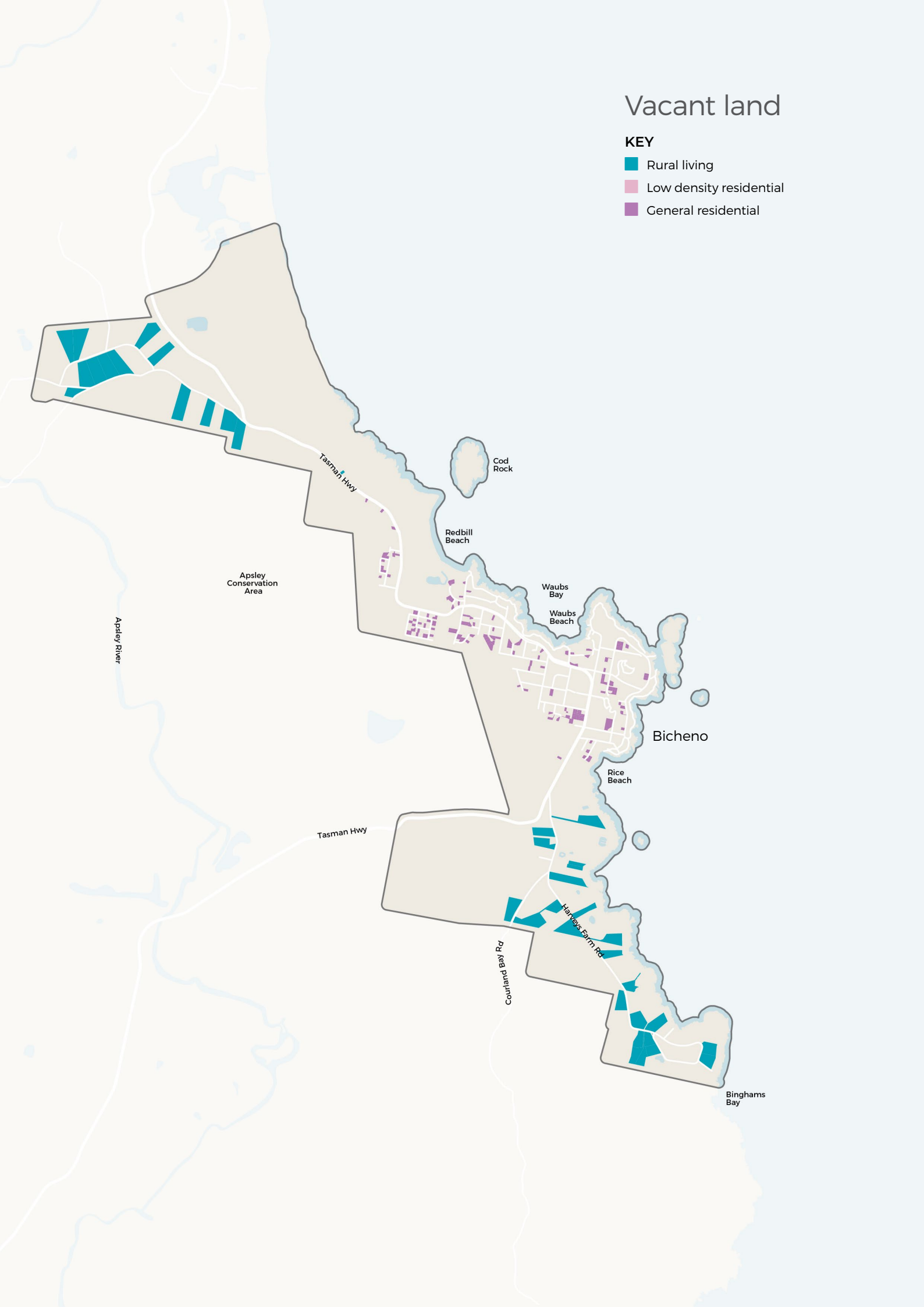
-  Sewer serviced land
-  Water serviced land



Vacant land

KEY

- Rural living
- Low density residential
- General residential



Natural features

KEY

- Potential flood prone area
- Conservation area
- Conservation Covenant (NCA)
- Game Reserve
- Informal Reserve on other public land
- National Park
- Nature Reserve
- Regional Reserve
- State Reserve

