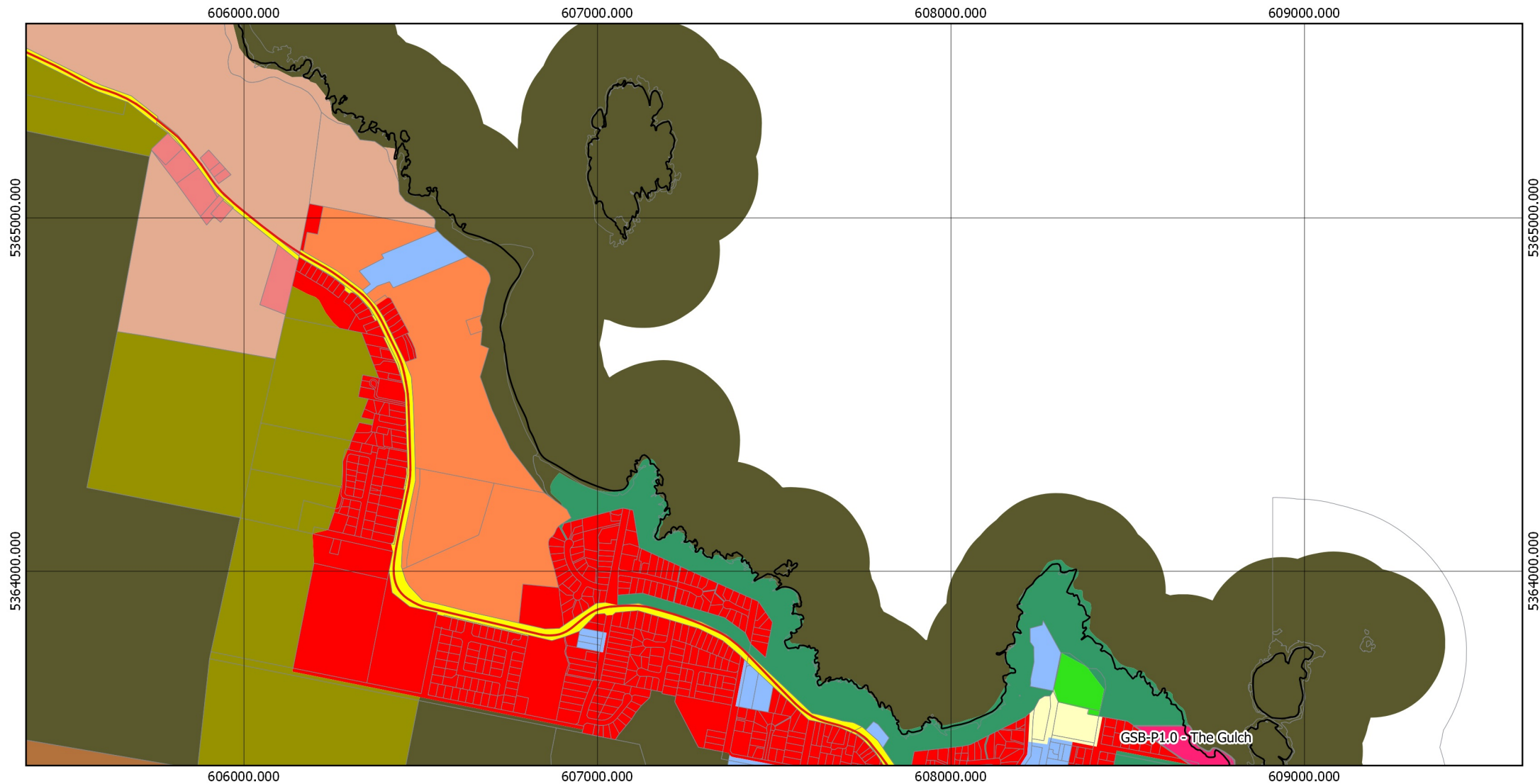


# TASMANIAN PLANNING SCHEME - ZONES: GLAMORGAN-SPRING BAY LOCAL PROVISIONS SCHEDULE



## Legend

State Hwy	Rural Living B	Light Industrial	Future Urban
Property Parcels	Village	Rural	Particular Purpose (The Gulch)
LPS Boundary	Community Purpose	Agriculture	Particular Purpose (Dolphin)
General Residential	Open Space	Utilities	Particular Purpose (Sapphire)
Low Density Residential	Recreation	Landscape Conservation	Particular Purpose (Solis)
Rural Living A	Local Business	Environmental Management	Particular Purpose (Spring Bay)
	General Industrial	Major Tourism	

## Bicheno North Map 1 of 22

0 100 200 300 400 500 metres

Coordinate System: GDA 1994 MGA Zone 55

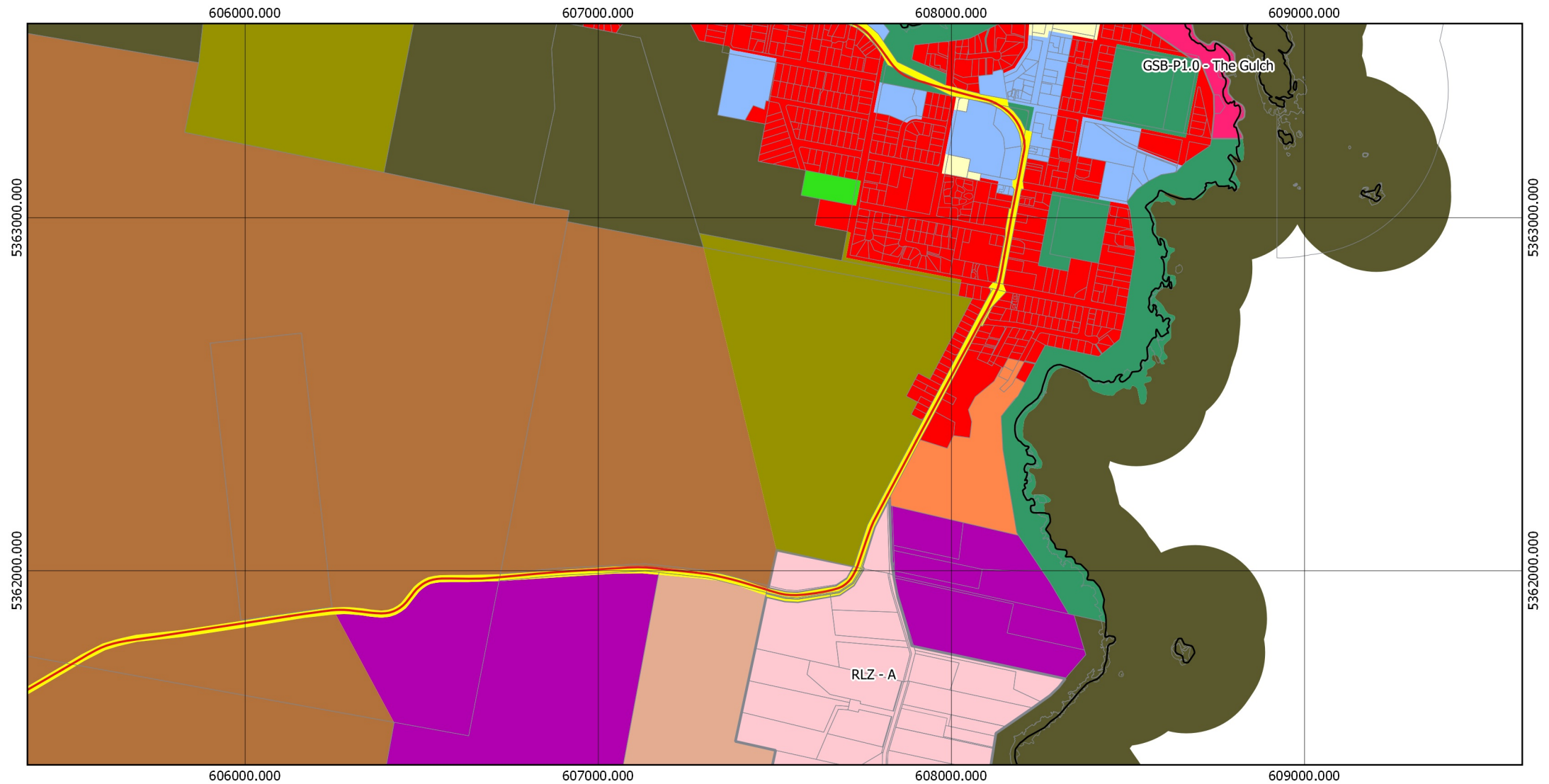
Base data from theLIST, © State of Tasmania  
Land title data current as of 26/09/2017

Disclaimer: Before taking any action based on  
data shown on this map, it should first be verified  
with the relevant council.

Date: 23/11/2017



# TASMANIAN PLANNING SCHEME - ZONES: GLAMORGAN-SPRING BAY LOCAL PROVISIONS SCHEDULE



## Legend

State Hwy	Rural Living B	Light Industrial	Future Urban
Property Parcels	Village	Rural	Particular Purpose (The Gulch)
LPS Boundary	Community Purpose	Agriculture	Particular Purpose (Dolphin)
General Residential	Open Space	Utilities	Particular Purpose (Sapphire)
Low Density Residential	Recreation	Landscape Conservation	Particular Purpose (Solis)
Rural Living A	Local Business	Environmental Management	Particular Purpose (Spring Bay)
	General Industrial	Major Tourism	

## Bicheno Map 2 of 22

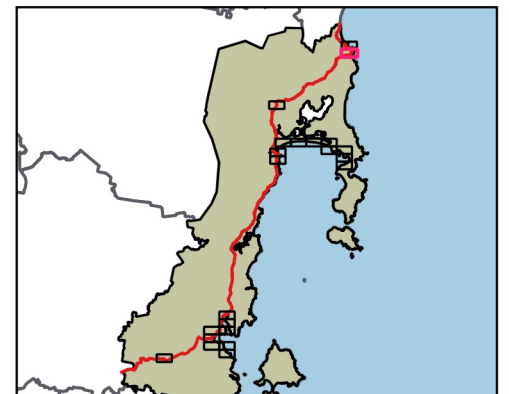
0 100 200 300 400 500 metres

Coordinate System: GDA 1994 MGA Zone 55

Base data from theLIST, © State of Tasmania  
Land title data current as of 26/09/2017

Disclaimer: Before taking any action based on data shown on this map, it should first be verified with the relevant council.

Date: 23/11/2017



# TASMANIAN PLANNING SCHEME - ZONES: GLAMORGAN-SPRING BAY LOCAL PROVISIONS SCHEDULE

587000.000

588000.000

589000.000

590000.000

5349000.000

5348000.000

5349000.000

5348000.000

587000.000

588000.000

589000.000

590000.000

## Legend

 State Hwy	 Rural Living B	 Light Industrial	 Future Urban
 Property Parcels	 Village	 Rural	 Particular Purpose (The Gulch)
 LPS Boundary	 Community Purpose	 Agriculture	 Particular Purpose (Dolphin)
 General Residential	 Open Space	 Utilities	 Particular Purpose (Sapphire)
 Low Density Residential	 Recreation	 Landscape Conservation	 Particular Purpose (Solis)
 Rural Living A	 Local Business	 Environmental Management	 Particular Purpose (Spring Bay)
	 General Industrial	 Major Tourism	

## Cranbrook Map 3 of 22

0 100 200 300 400 500 metres



Coordinate System: GDA 1994 MGA Zone 55

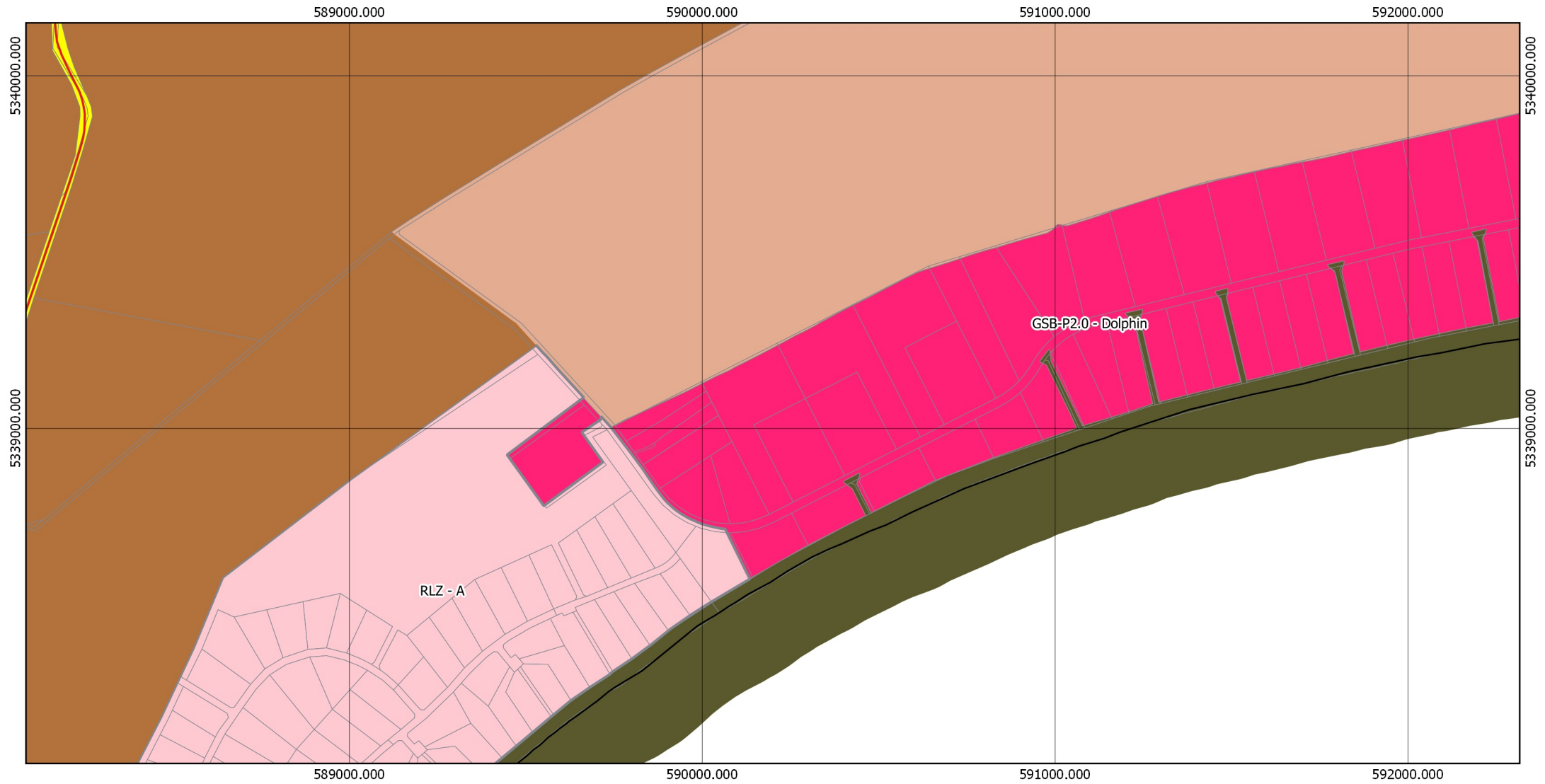
Base data from theLIST, © State of Tasmania  
Land title data current as of 26/09/2017

Disclaimer: Before taking any action based on  
data shown on this map, it should first be verified  
with the relevant council.

Date: 23/11/2017



# TASMANIAN PLANNING SCHEME - ZONES: GLAMORGAN-SPRING BAY LOCAL PROVISIONS SCHEDULE



## Legend

State Hwy	Rural Living B	Light Industrial	Future Urban
Property Parcels	Village	Rural	Particular Purpose (The Gulch)
LPS Boundary	Community Purpose	Agriculture	Particular Purpose (Dolphin)
General Residential	Open Space	Utilities	Particular Purpose (Sapphire)
Low Density Residential	Recreation	Landscape Conservation	Particular Purpose (Solis)
Rural Living A	Local Business	Environmental Management	Particular Purpose (Spring Bay)
	General Industrial	Major Tourism	

## Dolphin Sands West Map 4 of 22

0 100 200 300 400 500 metres

Coordinate System: GDA 1994 MGA Zone 55

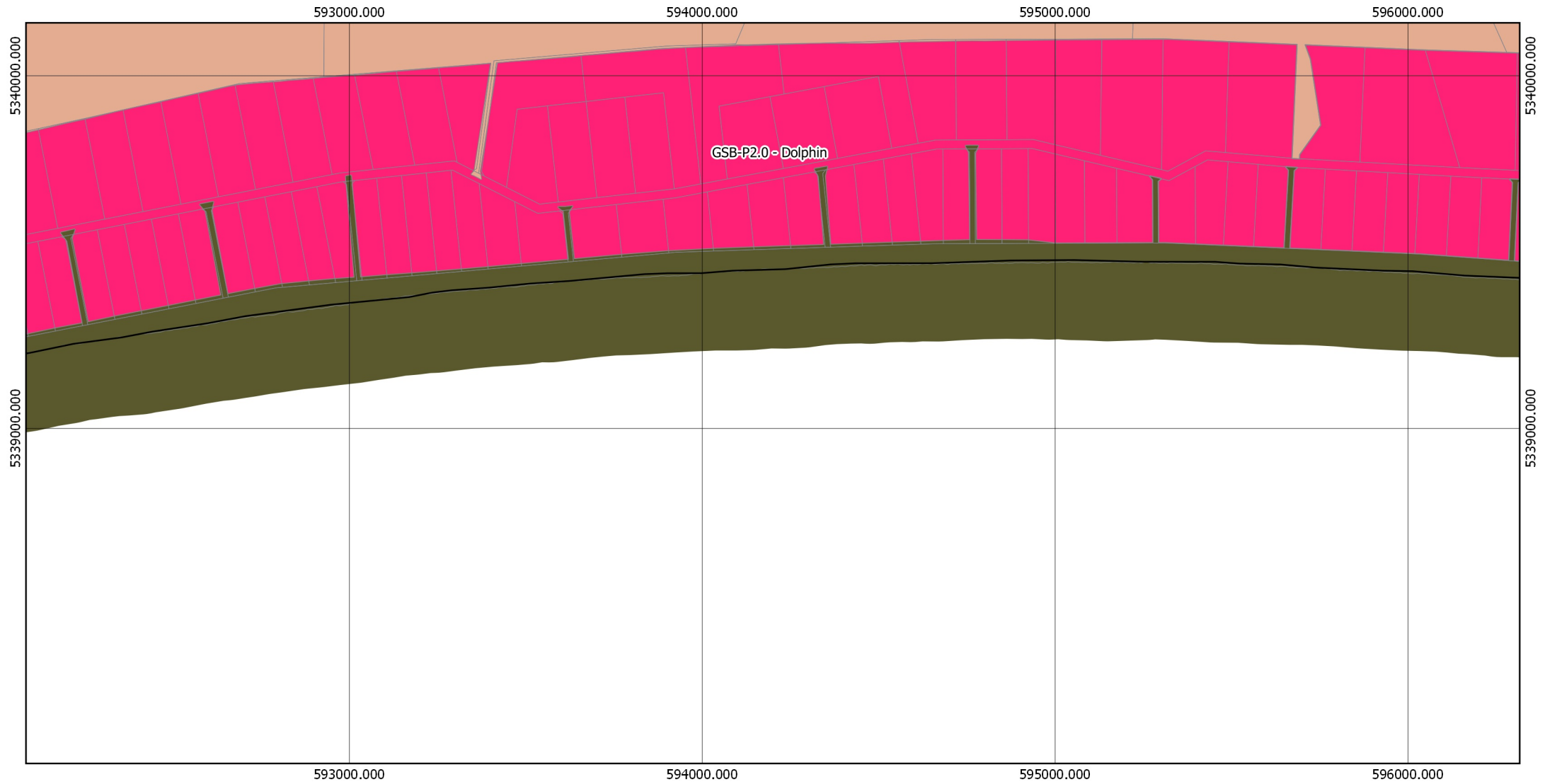
Base data from theLIST, © State of Tasmania  
Land title data current as of 26/09/2017

Disclaimer: Before taking any action based on  
data shown on this map, it should first be verified  
with the relevant council.

Date: 23/11/2017



# TASMANIAN PLANNING SCHEME - ZONES: GLAMORGAN-SPRING BAY LOCAL PROVISIONS SCHEDULE



## Legend

State Hwy	Rural Living B	Light Industrial	Future Urban
Property Parcels	Village	Rural	Particular Purpose (The Gulch)
LPS Boundary	Community Purpose	Agriculture	Particular Purpose (Dolphin)
General Residential	Open Space	Utilities	Particular Purpose (Sapphire)
Low Density Residential	Recreation	Landscape Conservation	Particular Purpose (Solis)
Rural Living A	Local Business	Environmental Management	Particular Purpose (Spring Bay)
	General Industrial	Major Tourism	

## Dolphin Sands Map 5 of 22

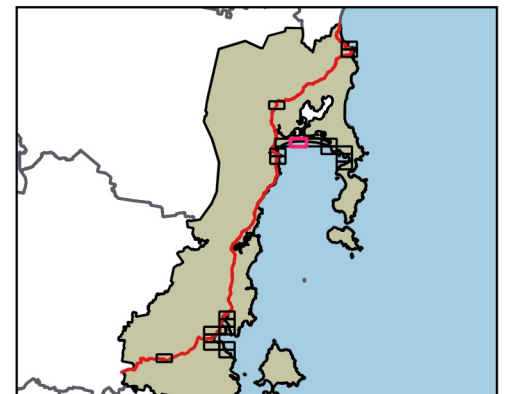
0 100 200 300 400 500 metres

Coordinate System: GDA 1994 MGA Zone 55

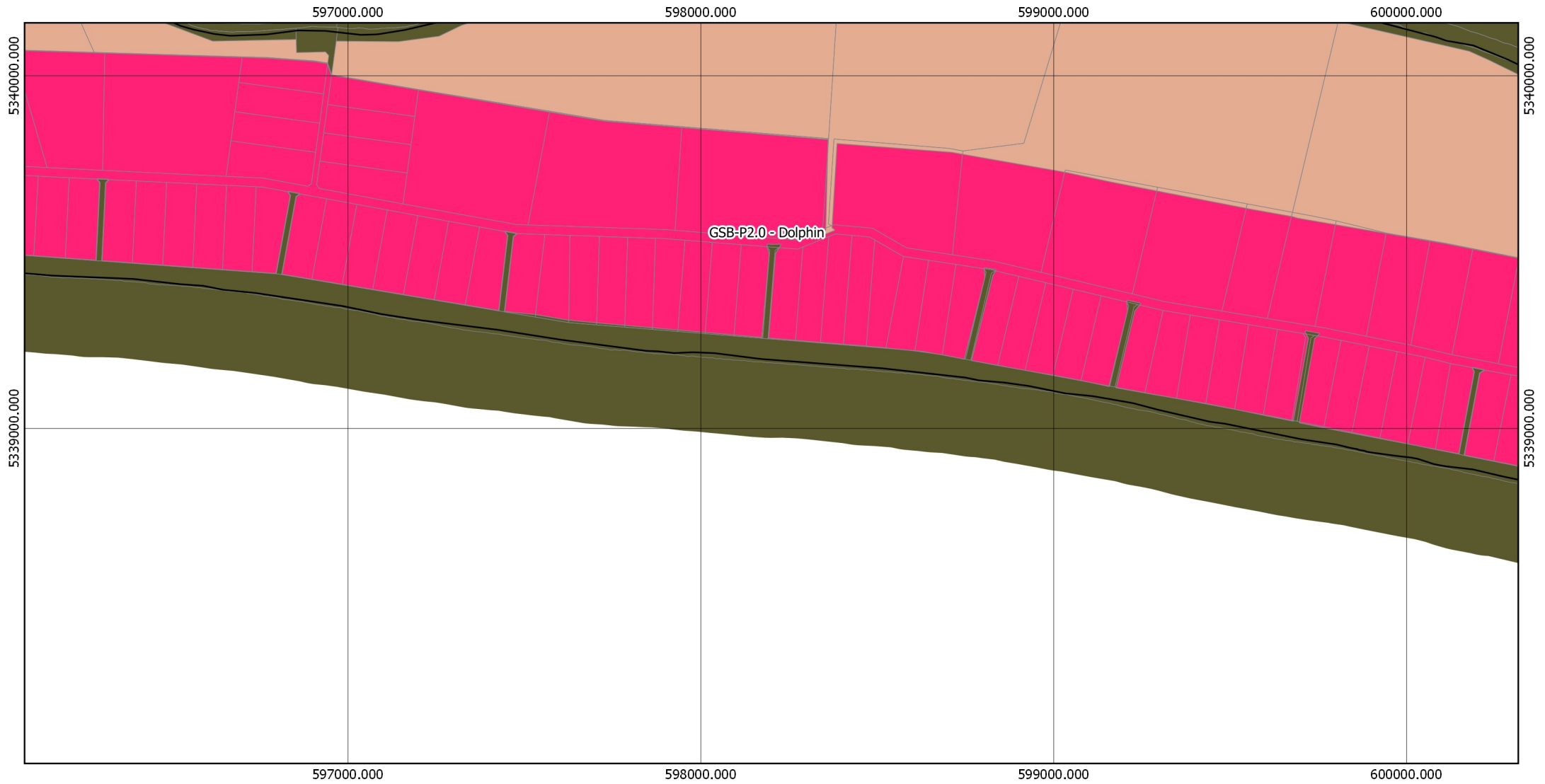
Base data from theLIST, © State of Tasmania  
Land title data current as of 26/09/2017

Disclaimer: Before taking any action based on  
data shown on this map, it should first be verified  
with the relevant council.

Date: 23/11/2017



# TASMANIAN PLANNING SCHEME - ZONES: GLAMORGAN-SPRING BAY LOCAL PROVISIONS SCHEDULE



## Legend

State Hwy	Rural Living B	Light Industrial	Future Urban
Property Parcels	Village	Rural	Particular Purpose (The Gulch)
LPS Boundary	Community Purpose	Agriculture	Particular Purpose (Dolphin)
General Residential	Open Space	Utilities	Particular Purpose (Sapphire)
Low Density Residential	Recreation	Landscape Conservation	Particular Purpose (Solis)
Rural Living A	Local Business	Environmental Management	Particular Purpose (Spring Bay)
	General Industrial	Major Tourism	

## Dolphin Sands East Map 6 of 22

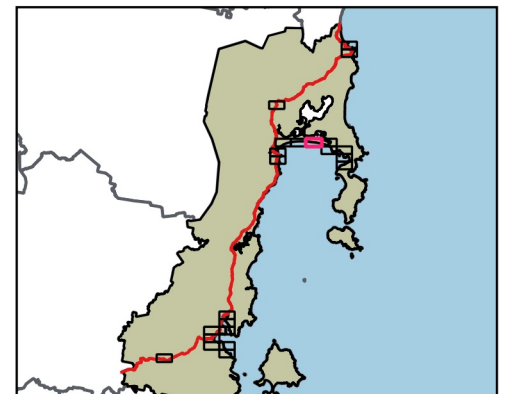
0 100 200 300 400 500 metres

Coordinate System: GDA 1994 MGA Zone 55

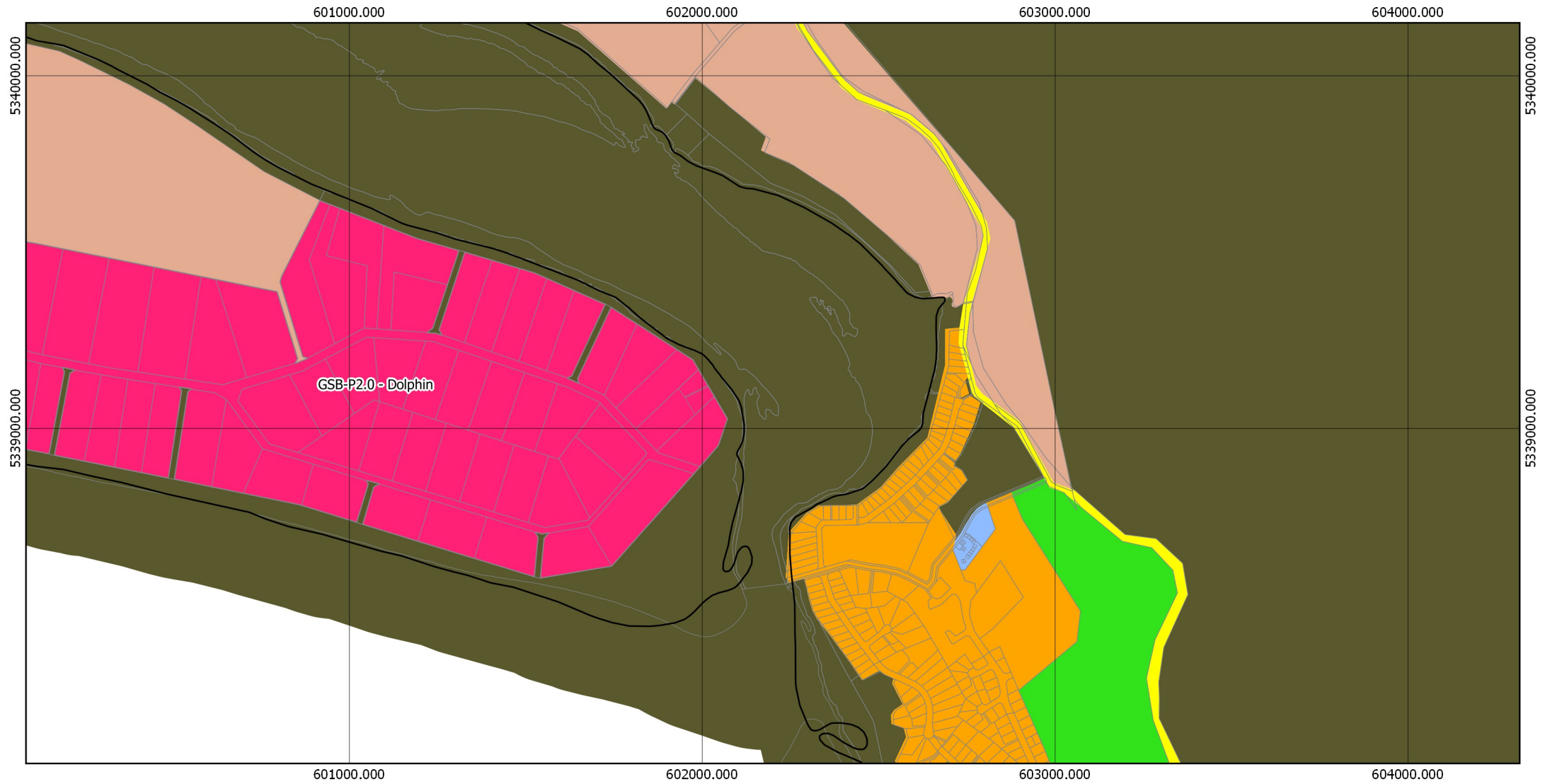
Base data from theLIST, © State of Tasmania  
Land title data current as of 26/09/2017

Disclaimer: Before taking any action based on  
data shown on this map, it should first be verified  
with the relevant council.

Date: 23/11/2017



# TASMANIAN PLANNING SCHEME - ZONES: GLAMORGAN-SPRING BAY LOCAL PROVISIONS SCHEDULE



## Legend

State Hwy	Rural Living B	Light Industrial	Future Urban
Property Parcels	Village	Rural	Particular Purpose (The Gulch)
LPS Boundary	Community Purpose	Agriculture	Particular Purpose (Dolphin)
General Residential	Open Space	Utilities	Particular Purpose (Sapphire)
Low Density Residential	Recreation	Landscape Conservation	Particular Purpose (Solis)
Rural Living A	Local Business	Environmental Management	Particular Purpose (Spring Bay)
	General Industrial	Major Tourism	

## Swanick Bay Map 7 of 22

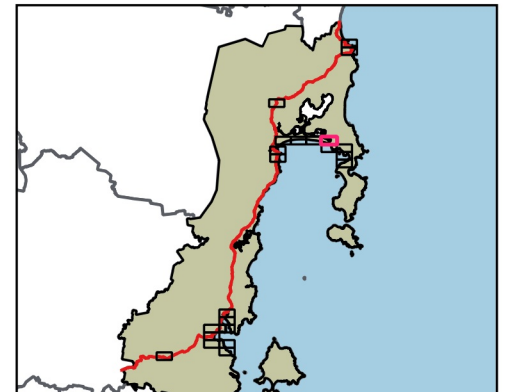
0 100 200 300 400 500 metres

Coordinate System: GDA 1994 MGA Zone 55

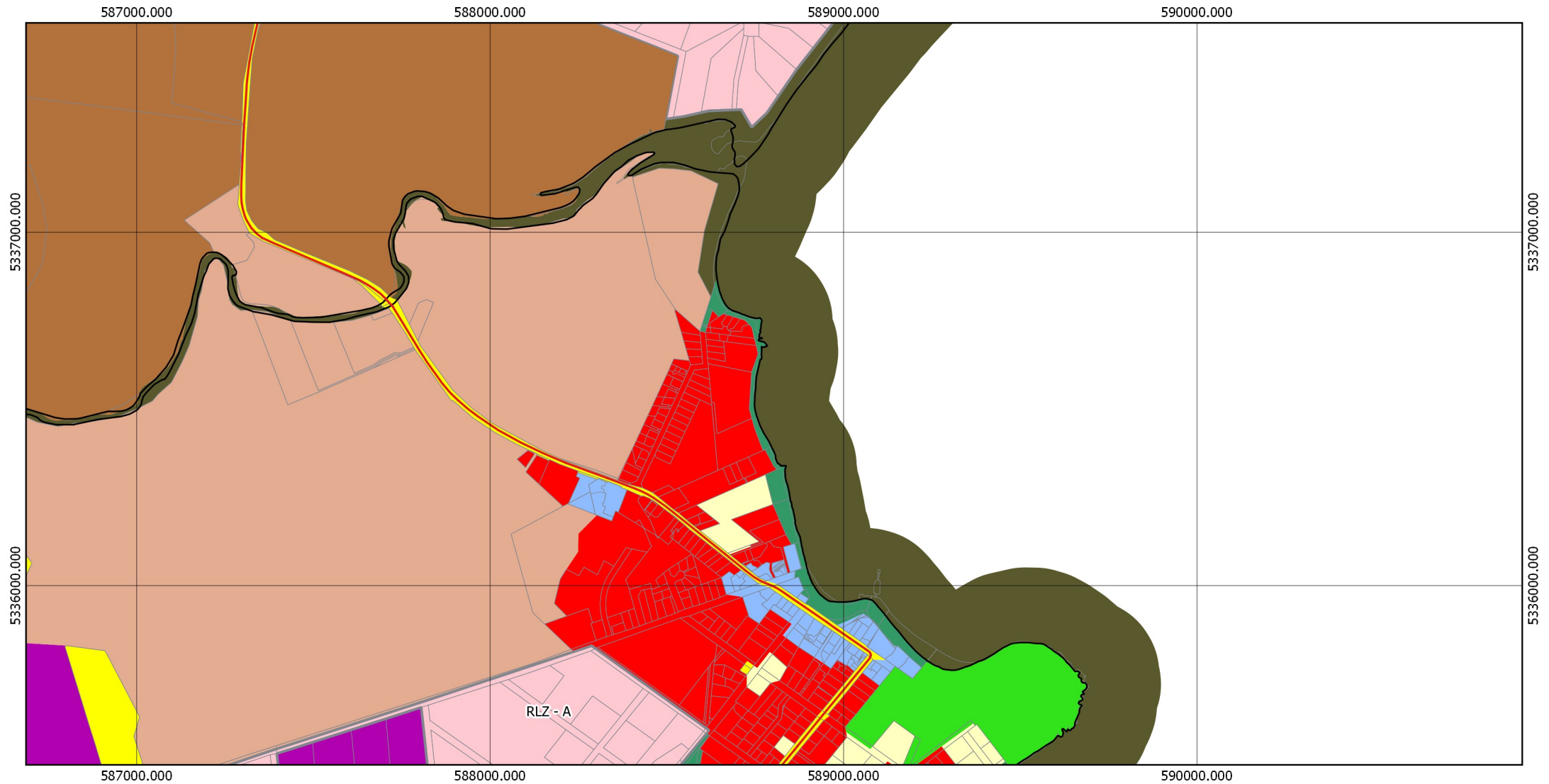
Base data from theLIST, © State of Tasmania  
Land title data current as of 26/09/2017

Disclaimer: Before taking any action based on data shown on this map, it should first be verified with the relevant council.

Date: 23/11/2017



# TASMANIAN PLANNING SCHEME - ZONES: GLAMORGAN-SPRING BAY LOCAL PROVISIONS SCHEDULE



## Legend

State Hwy	Rural Living B	Light Industrial	Future Urban
Property Parcels	Village	Rural	Particular Purpose (The Gulch)
LPS Boundary	Community Purpose	Agriculture	Particular Purpose (Dolphin)
General Residential	Open Space	Utilities	Particular Purpose (Sapphire)
Low Density Residential	Recreation	Landscape Conservation	Particular Purpose (Solis)
Rural Living A	Local Business	Environmental Management	Particular Purpose (Spring Bay)
General Industrial	Major Tourism		

## Swansea North Map 8 of 22

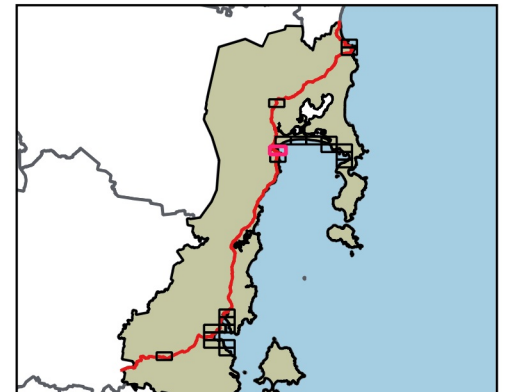
0 100 200 300 400 500 metres

Coordinate System: GDA 1994 MGA Zone 55

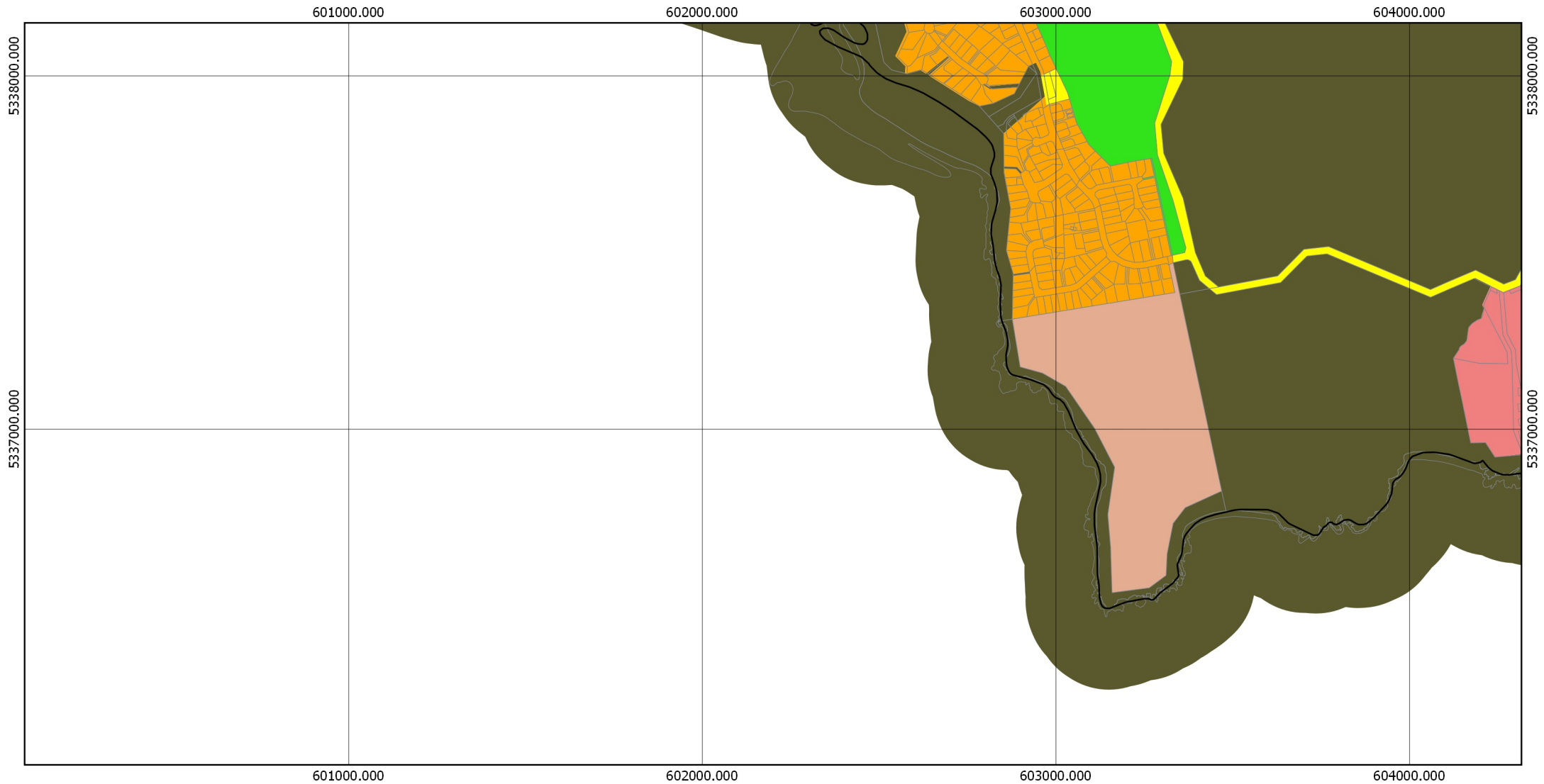
Base data from theLIST, © State of Tasmania  
Land title data current as of 26/09/2017

Disclaimer: Before taking any action based on  
data shown on this map, it should first be verified  
with the relevant council.

Date: 23/11/2017



# TASMANIAN PLANNING SCHEME - ZONES: GLAMORGAN-SPRING BAY LOCAL PROVISIONS SCHEDULE



## Legend

State Hwy	Rural Living B	Light Industrial	Future Urban
Property Parcels	Village	Rural	Particular Purpose (The Gulch)
LPS Boundary	Community Purpose	Agriculture	Particular Purpose (Dolphin)
General Residential	Open Space	Utilities	Particular Purpose (Sapphire)
Low Density Residential	Recreation	Landscape Conservation	Particular Purpose (Solis)
Rural Living A	Local Business	Environmental Management	Particular Purpose (Spring Bay)
	General Industrial	Major Tourism	

## Hepburn Point Map 9 of 22

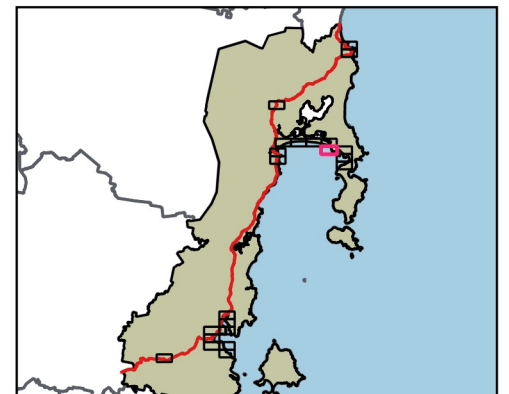
0 100 200 300 400 500 metres

Coordinate System: GDA 1994 MGA Zone 55

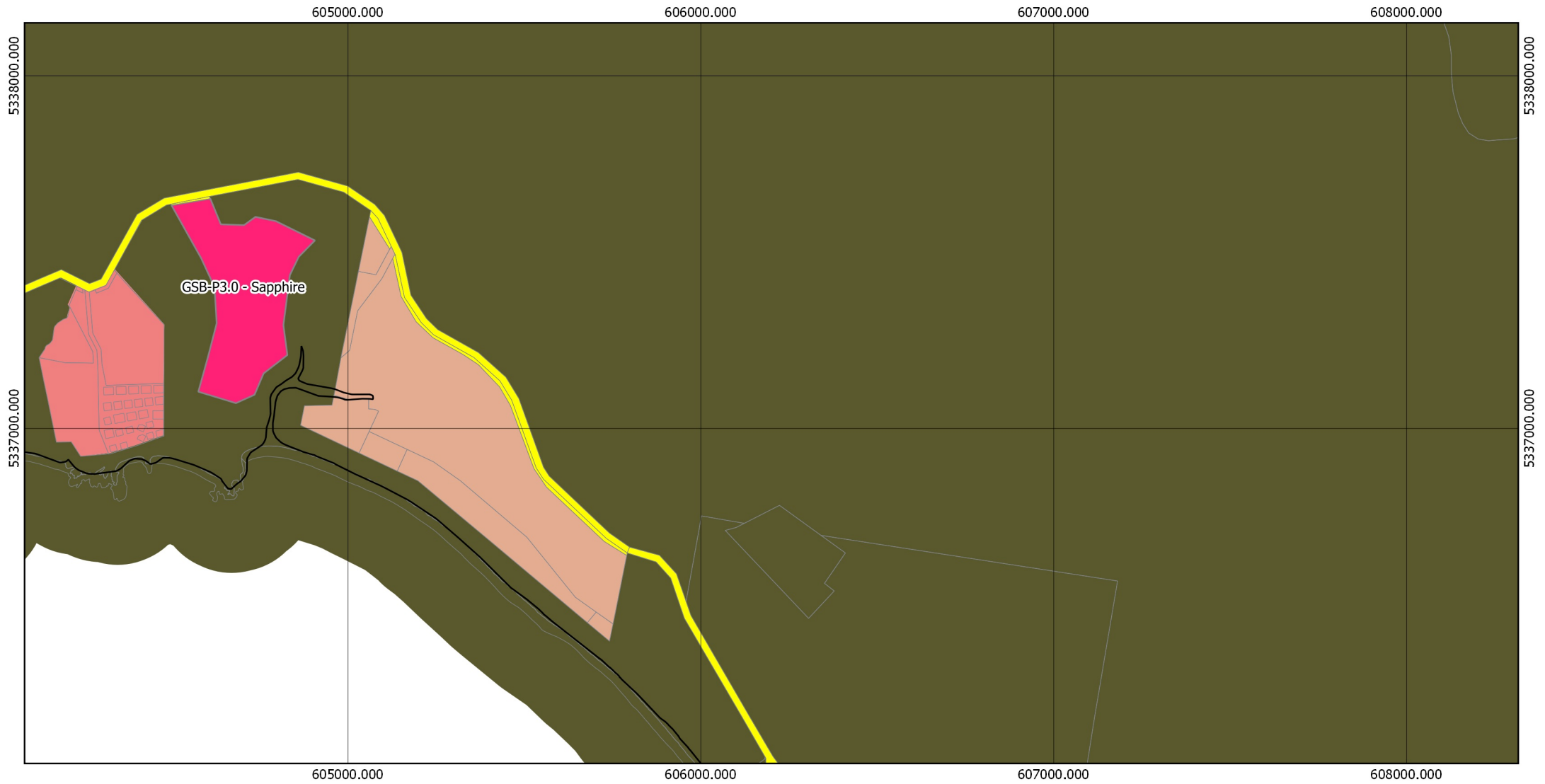
Base data from theLIST, © State of Tasmania  
Land title data current as of 26/09/2017

Disclaimer: Before taking any action based on  
data shown on this map, it should first be verified  
with the relevant council.

Date: 23/11/2017



# TASMANIAN PLANNING SCHEME - ZONES: GLAMORGAN-SPRING BAY LOCAL PROVISIONS SCHEDULE



## Legend

State Hwy	Rural Living B	Light Industrial	Future Urban
Property Parcels	Village	Rural	Particular Purpose (The Gulch)
LPS Boundary	Community Purpose	Agriculture	Particular Purpose (Dolphin)
General Residential	Open Space	Utilities	Particular Purpose (Sapphire)
Low Density Residential	Recreation	Landscape Conservation	Particular Purpose (Solis)
Rural Living A	Local Business	Environmental Management	Particular Purpose (Spring Bay)
General Industrial	Major Tourism		

## Muir's Beach Map 10 of 22

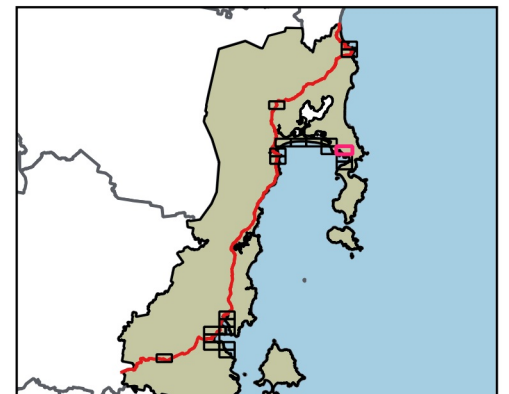
0 100 200 300 400 500 metres

Coordinate System: GDA 1994 MGA Zone 55

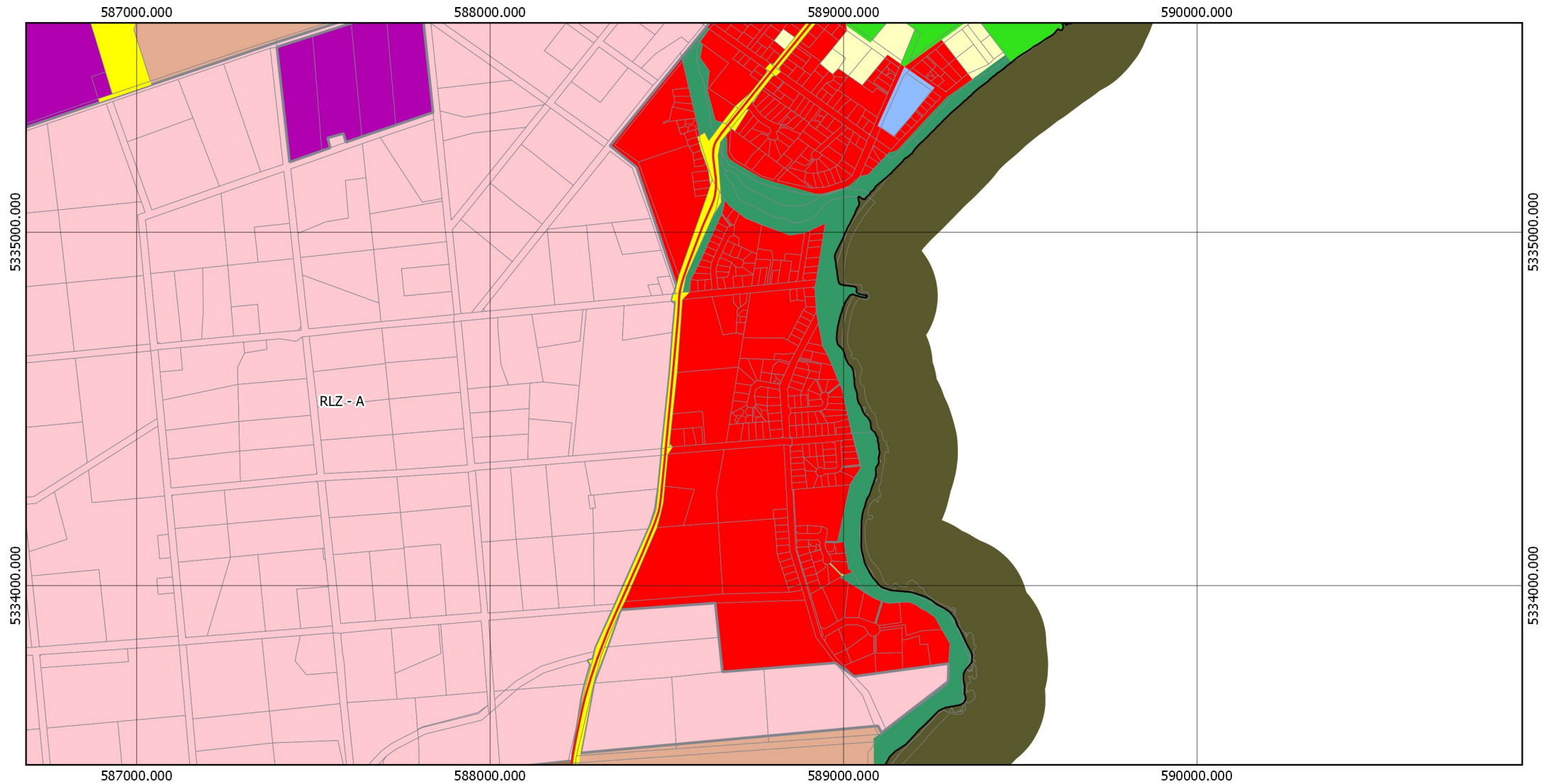
Base data from theLIST, © State of Tasmania  
Land title data current as of 26/09/2017

Disclaimer: Before taking any action based on data shown on this map, it should first be verified with the relevant council.

Date: 23/11/2017



# TASMANIAN PLANNING SCHEME - ZONES: GLAMORGAN-SPRING BAY LOCAL PROVISIONS SCHEDULE



## Legend

State Hwy	Rural Living B	Light Industrial	Future Urban
Property Parcels	Village	Rural	Particular Purpose (The Gulch)
LPS Boundary	Community Purpose	Agriculture	Particular Purpose (Dolphin)
General Residential	Open Space	Utilities	Particular Purpose (Sapphire)
Low Density Residential	Recreation	Landscape Conservation	Particular Purpose (Solis)
Rural Living A	Local Business	Environmental Management	Particular Purpose (Spring Bay)
General Industrial	Major Tourism		

## Swansea Map 11 of 22

0 100 200 300 400 500 metres



Coordinate System: GDA 1994 MGA Zone 55

Base data from theLIST, © State of Tasmania  
Land title data current as of 26/09/2017

Disclaimer: Before taking any action based on data shown on this map, it should first be verified with the relevant council.

Date: 23/11/2017



# TASMANIAN PLANNING SCHEME - ZONES: GLAMORGAN-SPRING BAY LOCAL PROVISIONS SCHEDULE



## Legend

State Hwy	Rural Living B	Light Industrial	Future Urban
Property Parcels	Village	Rural	Particular Purpose (The Gulch)
LPS Boundary	Community Purpose	Agriculture	Particular Purpose (Dolphin)
General Residential	Open Space	Utilities	Particular Purpose (Sapphire)
Low Density Residential	Recreation	Landscape Conservation	Particular Purpose (Solis)
Rural Living A	Local Business	Environmental Management	Particular Purpose (Spring Bay)
	General Industrial	Major Tourism	

## Coles Bay Map 12 of 22

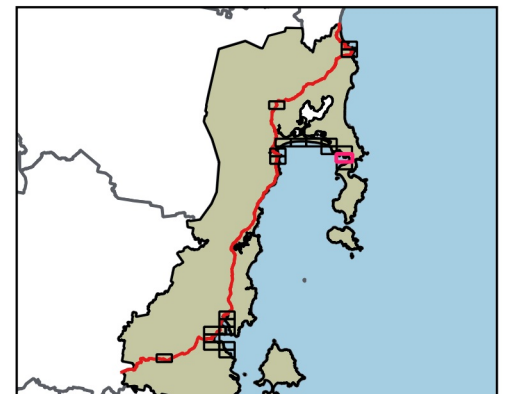
0 100 200 300 400 500 metres

Coordinate System: GDA 1994 MGA Zone 55

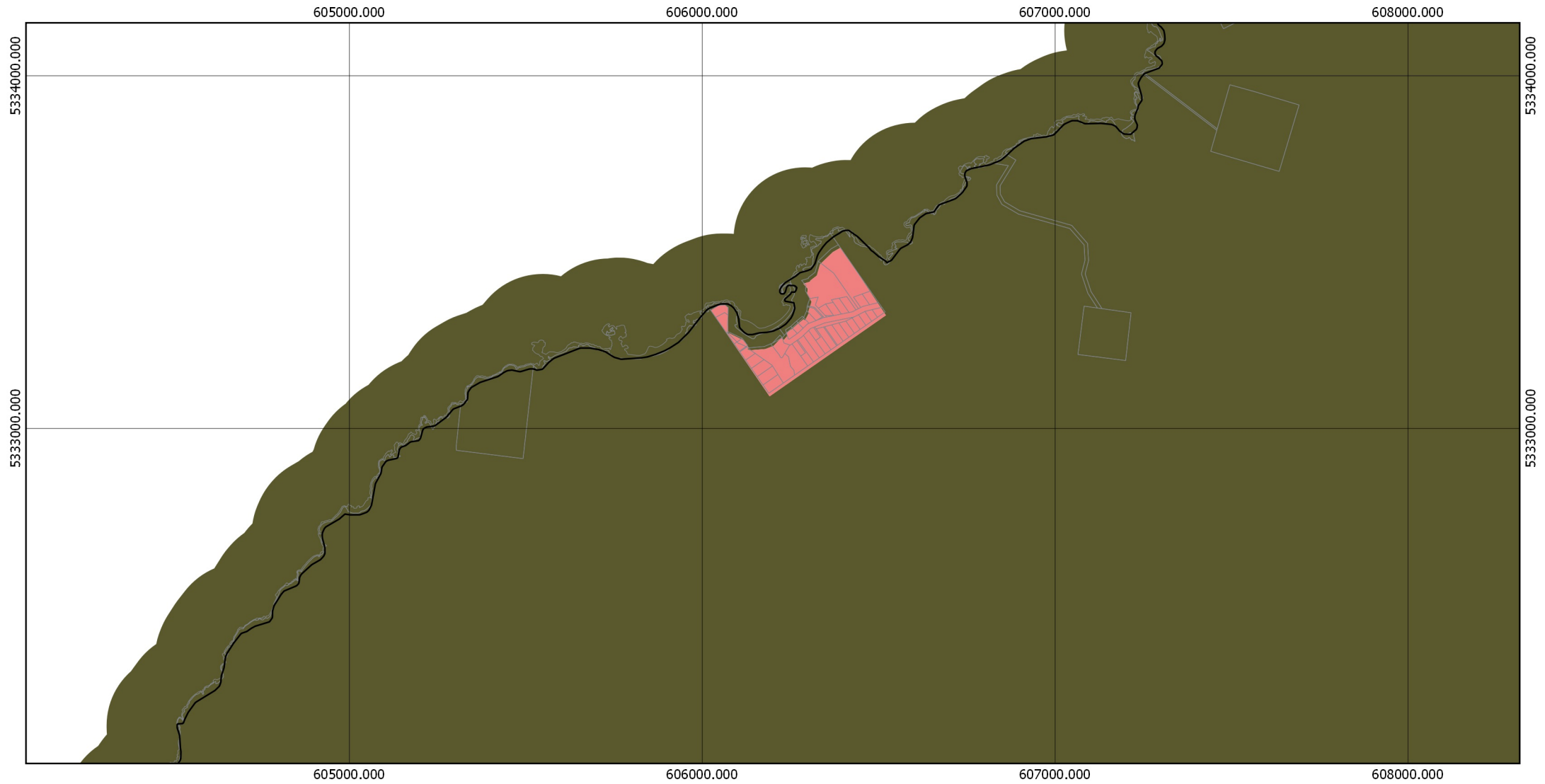
Base data from theLIST, © State of Tasmania  
Land title data current as of 26/09/2017

Disclaimer: Before taking any action based on data shown on this map, it should first be verified with the relevant council.

Date: 23/11/2017



# TASMANIAN PLANNING SCHEME - ZONES: GLAMORGAN-SPRING BAY LOCAL PROVISIONS SCHEDULE



## Legend

State Hwy	Rural Living B	Light Industrial	Future Urban
Property Parcels	Village	Rural	Particular Purpose (The Gulch)
LPS Boundary	Community Purpose	Agriculture	Particular Purpose (Dolphin)
General Residential	Open Space	Utilities	Particular Purpose (Sapphire)
Low Density Residential	Recreation	Landscape Conservation	Particular Purpose (Solis)
Rural Living A	Local Business	Environmental Management	Particular Purpose (Spring Bay)
	General Industrial	Major Tourism	

## Freycinet Map 13 of 22

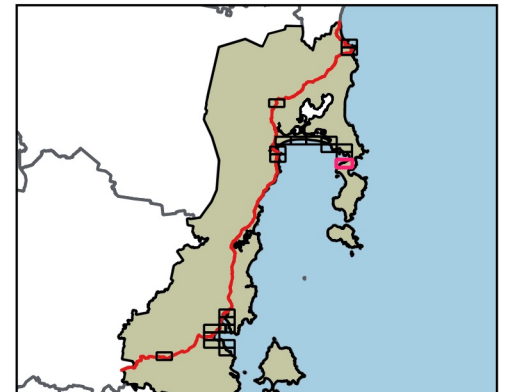
0 100 200 300 400 500 metres

Coordinate System: GDA 1994 MGA Zone 55

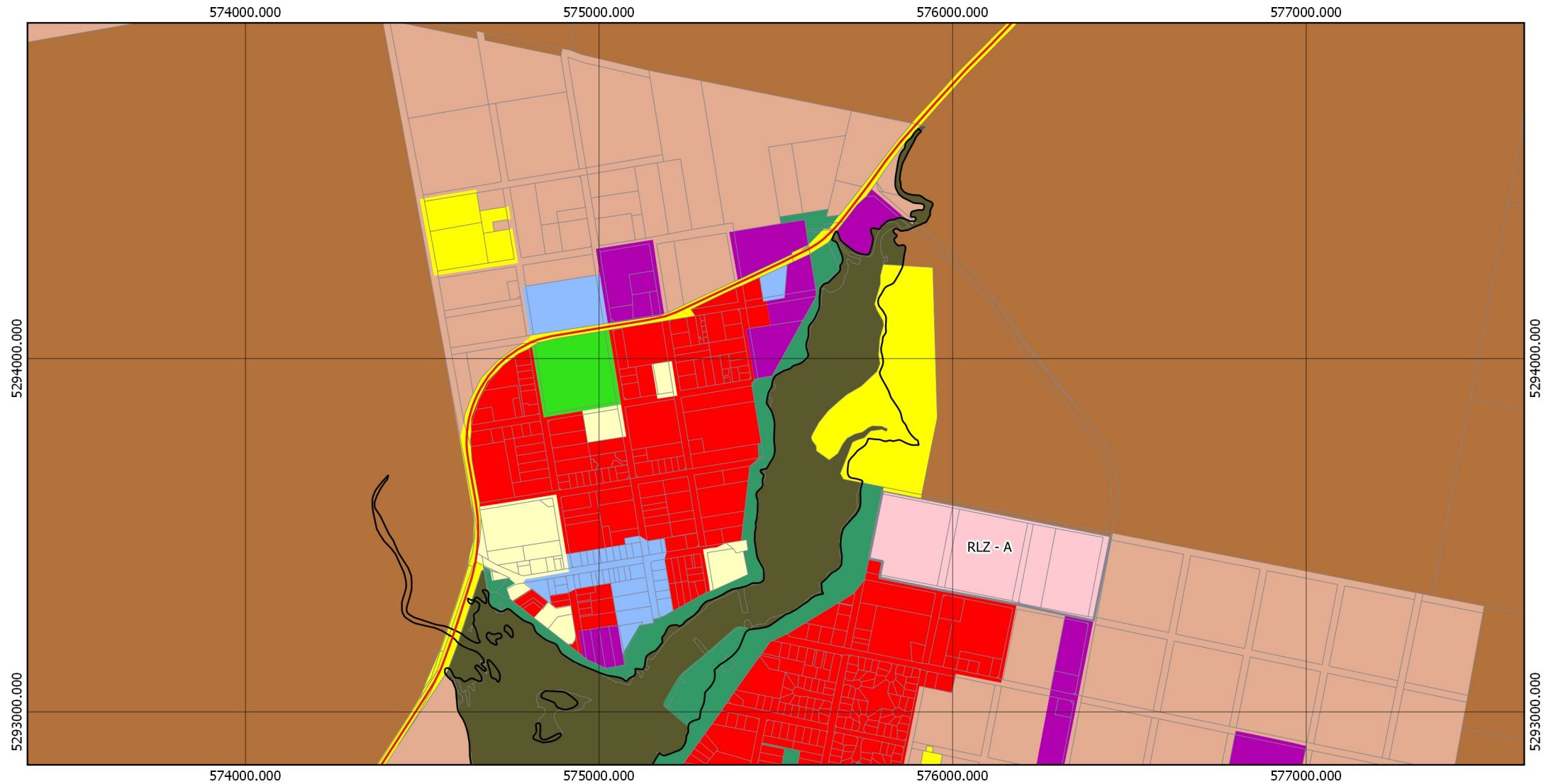
Base data from theLIST, © State of Tasmania  
Land title data current as of 26/09/2017

Disclaimer: Before taking any action based on data shown on this map, it should first be verified with the relevant council.

Date: 23/11/2017



# TASMANIAN PLANNING SCHEME - ZONES: GLAMORGAN-SPRING BAY LOCAL PROVISIONS SCHEDULE



## Legend

State Hwy	Rural Living B	Light Industrial	Future Urban
Property Parcels	Village	Rural	Particular Purpose (The Gulch)
LPS Boundary	Community Purpose	Agriculture	Particular Purpose (Dolphin)
General Residential	Open Space	Utilities	Particular Purpose (Sapphire)
Low Density Residential	Recreation	Landscape Conservation	Particular Purpose (Solis)
Rural Living A	Local Business	Environmental Management	Particular Purpose (Spring Bay)
	General Industrial	Major Tourism	

## Triabunna Map 14 of 22

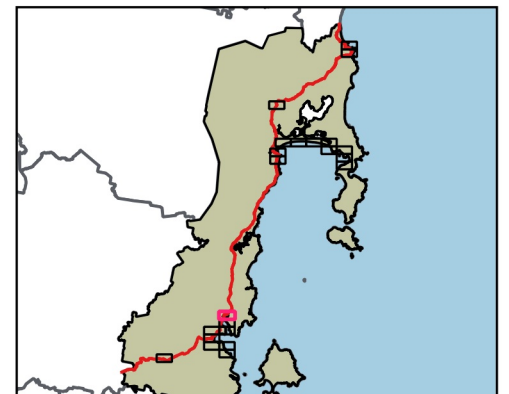
0 100 200 300 400 500 metres

Coordinate System: GDA 1994 MGA Zone 55

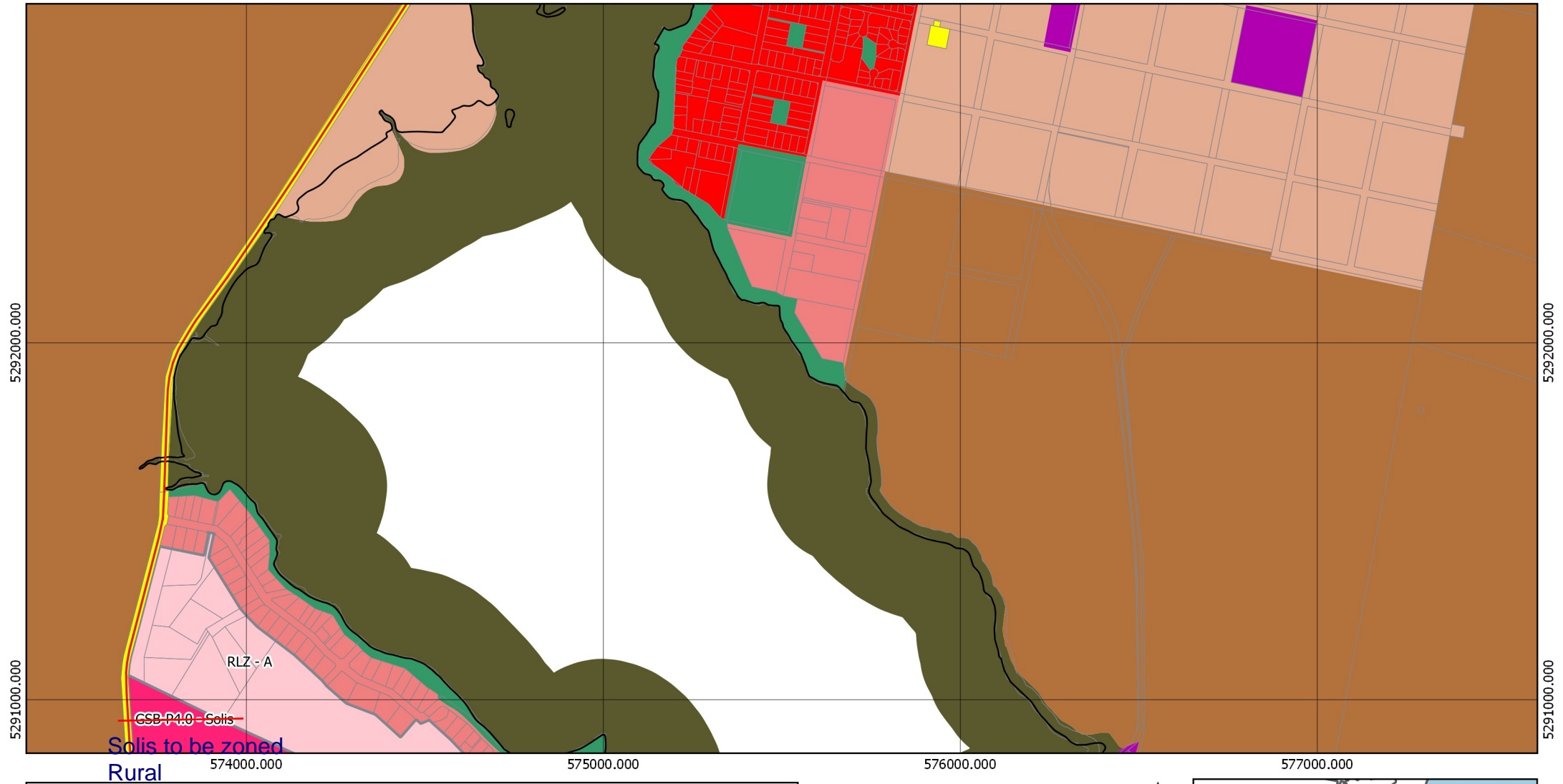
Base data from theLIST, © State of Tasmania  
Land title data current as of 26/09/2017

Disclaimer: Before taking any action based on  
data shown on this map, it should first be verified  
with the relevant council.

Date: 23/11/2017



574000.000	575000.000	576000.000	577000.000
------------	------------	------------	------------



### Legend

- |  |                         |   |                    |   |                          |   |                                 |
|--|-------------------------|---|--------------------|---|--------------------------|---|---------------------------------|
|  | State Hwy               |  | Rural Living B     |  | Light Industrial         |  | Future Urban                    |
|  | Property Parcels        |  | Village            |  | Rural                    |  | Particular Purpose (The Gulch)  |
|  | LPS Boundary            |  | Community Purpose  |  | Agriculture              |  | Particular Purpose (Dolphin)    |
|  | General Residential     |  | Open Space         |  | Utilities                |  | Particular Purpose (Sapphire)   |
|  | Low Density Residential |  | Recreation         |  | Landscape Conservation   |  | Particular Purpose (Solis)      |
|  | Rural Living A          |  | Local Business     |  | Environmental Management |  | Particular Purpose (Spring Bay) |
|  |                         |  | General Industrial |  | Major Tourism            |   |                                 |

**Spring Bay  
Map 15 of 22**



Coordinate System: GDA 1994 MGA Zone 55

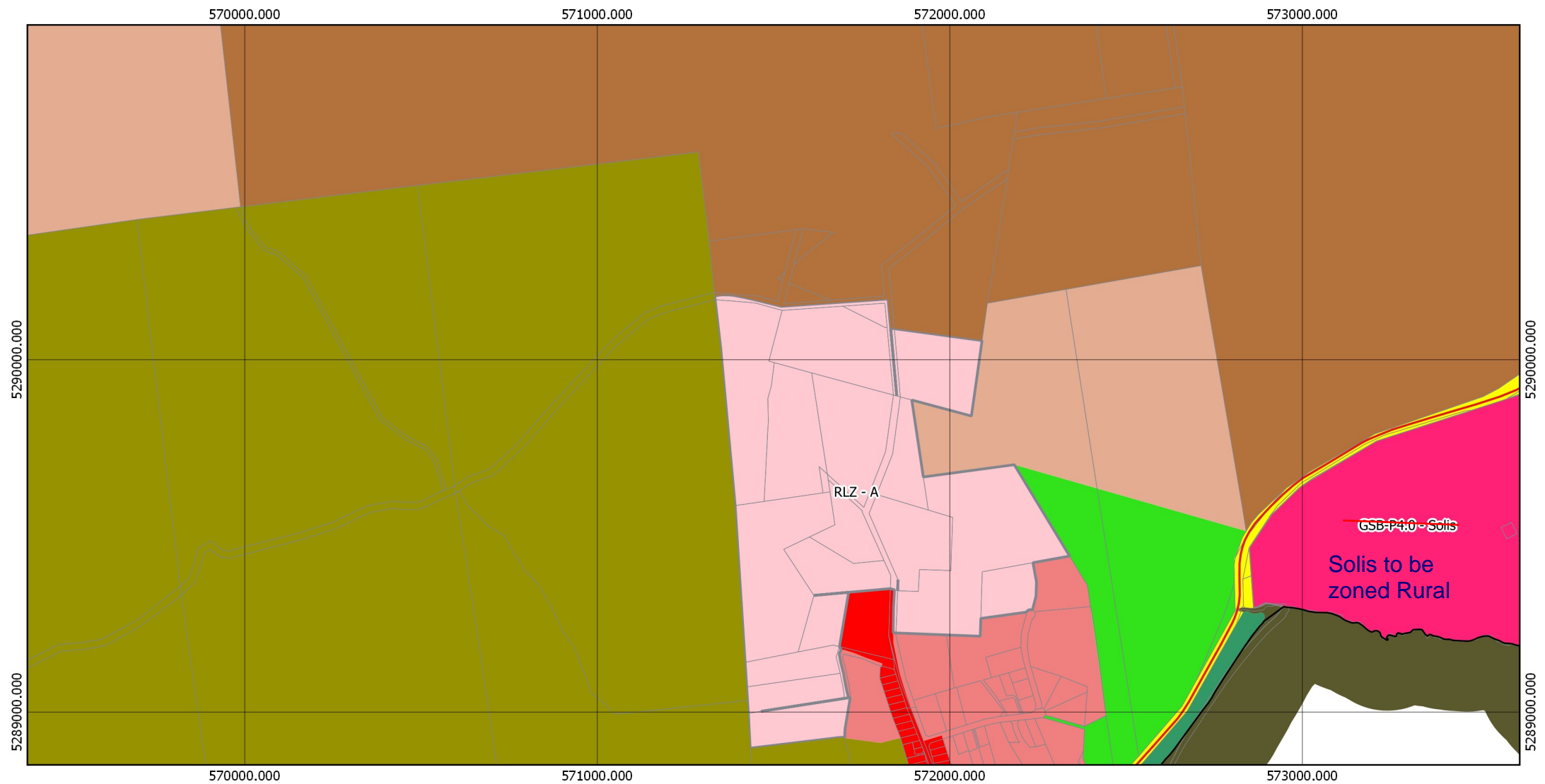
Base data from theLIST, © State of Tasmania  
Land title data current as of 26/09/2017

Disclaimer: Before taking any action based on data shown on this map, it should first be verified with the relevant council.

Date: 23/11/2017



# TASMANIAN PLANNING SCHEME - ZONES: GLAMORGAN-SPRING BAY LOCAL PROVISIONS SCHEDULE



## Legend

State Hwy	Rural Living B	Light Industrial	Future Urban
Property Parcels	Village	Rural	Particular Purpose (The Gulch)
LPS Boundary	Community Purpose	Agriculture	Particular Purpose (Dolphin)
General Residential	Open Space	Utilities	Particular Purpose (Sapphire)
Low Density Residential	Recreation	Landscape Conservation	Particular Purpose (Solis)
Rural Living A	Local Business	Environmental Management	Particular Purpose (Spring Bay)
General Industrial	Major Tourism		

## Orford North Map 16 of 22

0 100 200 300 400 500 metres

Coordinate System: GDA 1994 MGA Zone 55

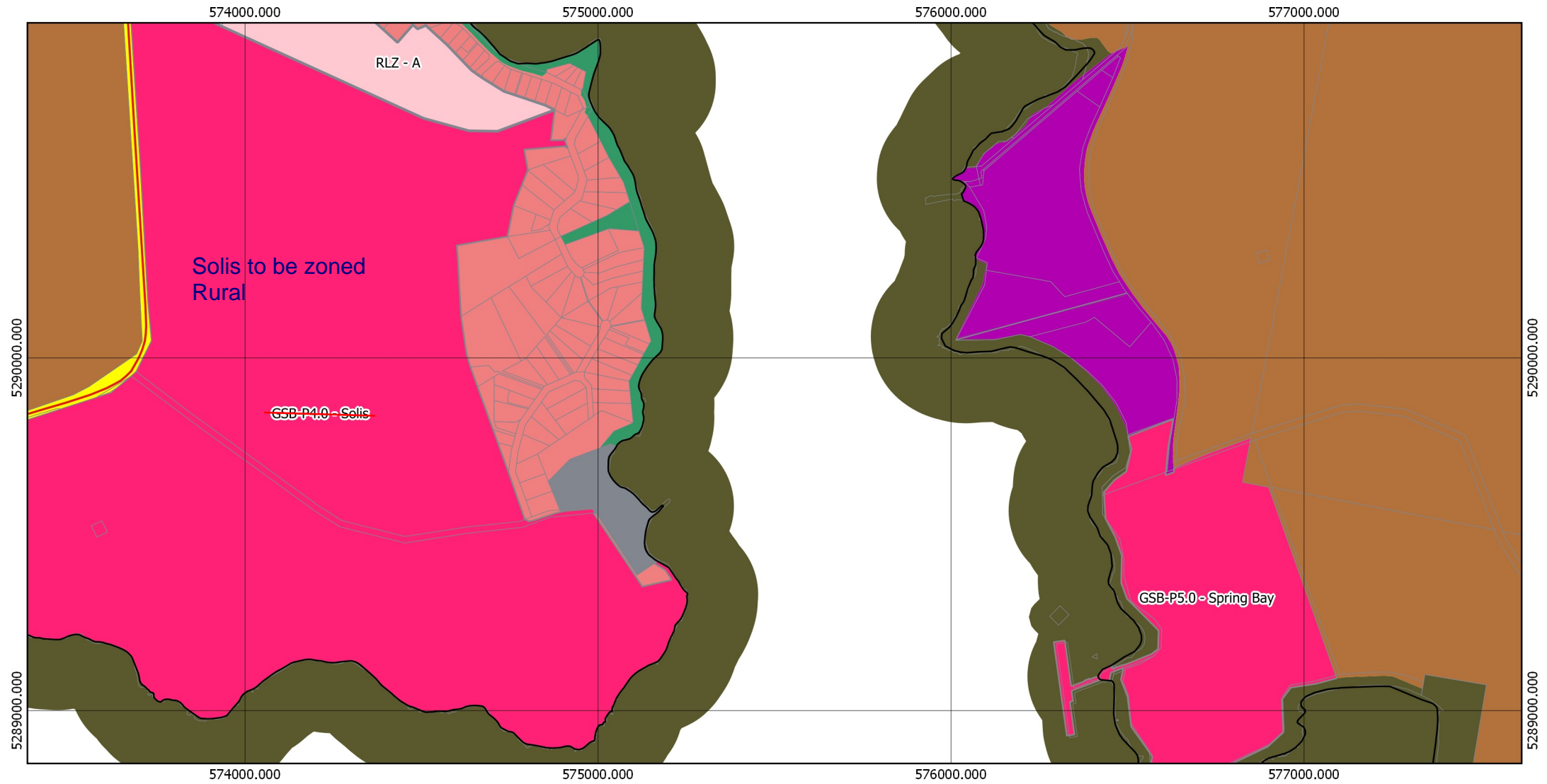
Base data from theLIST, © State of Tasmania  
Land title data current as of 26/09/2017

Disclaimer: Before taking any action based on  
data shown on this map, it should first be verified  
with the relevant council.

Date: 23/11/2017



# TASMANIAN PLANNING SCHEME - ZONES: GLAMORGAN-SPRING BAY LOCAL PROVISIONS SCHEDULE



## Legend

State Hwy	Rural Living B	Light Industrial	Future Urban
Property Parcels	Village	Rural	Particular Purpose (The Gulch)
LPS Boundary	Community Purpose	Agriculture	Particular Purpose (Dolphin)
General Residential	Open Space	Utilities	Particular Purpose (Sapphire)
Low Density Residential	Recreation	Landscape Conservation	Particular Purpose (Solis)
Rural Living A	Local Business	Environmental Management	Particular Purpose (Spring Bay)
	General Industrial	Major Tourism	

## Louisville Map 17 of 22

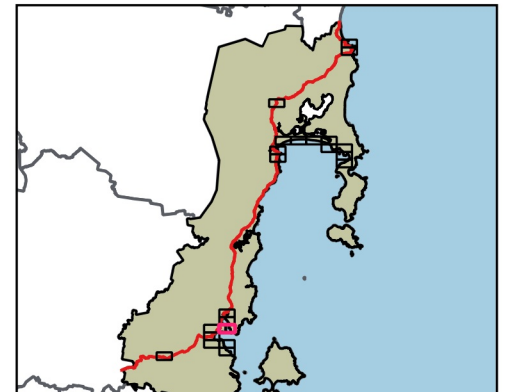
0 100 200 300 400 500 metres

Coordinate System: GDA 1994 MGA Zone 55

Base data from theLIST, © State of Tasmania  
Land title data current as of 26/09/2017

Disclaimer: Before taking any action based on data shown on this map, it should first be verified with the relevant council.

Date: 23/11/2017



# TASMANIAN PLANNING SCHEME - ZONES: GLAMORGAN-SPRING BAY LOCAL PROVISIONS SCHEDULE

570000.000

571000.000

572000.000

573000.000

5288000.000

5287000.000

5288000.000

5287000.000

570000.000

571000.000

572000.000

573000.000

## Legend

 State Hwy	 Rural Living B	 Light Industrial	 Future Urban
 Property Parcels	 Village	 Rural	 Particular Purpose (The Gulch)
 LPS Boundary	 Community Purpose	 Agriculture	 Particular Purpose (Dolphin)
 General Residential	 Open Space	 Utilities	 Particular Purpose (Sapphire)
 Low Density Residential	 Recreation	 Landscape Conservation	 Particular Purpose (Solis)
 Rural Living A	 Local Business	 Environmental Management	 Particular Purpose (Spring Bay)
	 General Industrial	 Major Tourism	

## Orford Map 18 of 22

0 100 200 300 400 500 metres

Coordinate System: GDA 1994 MGA Zone 55

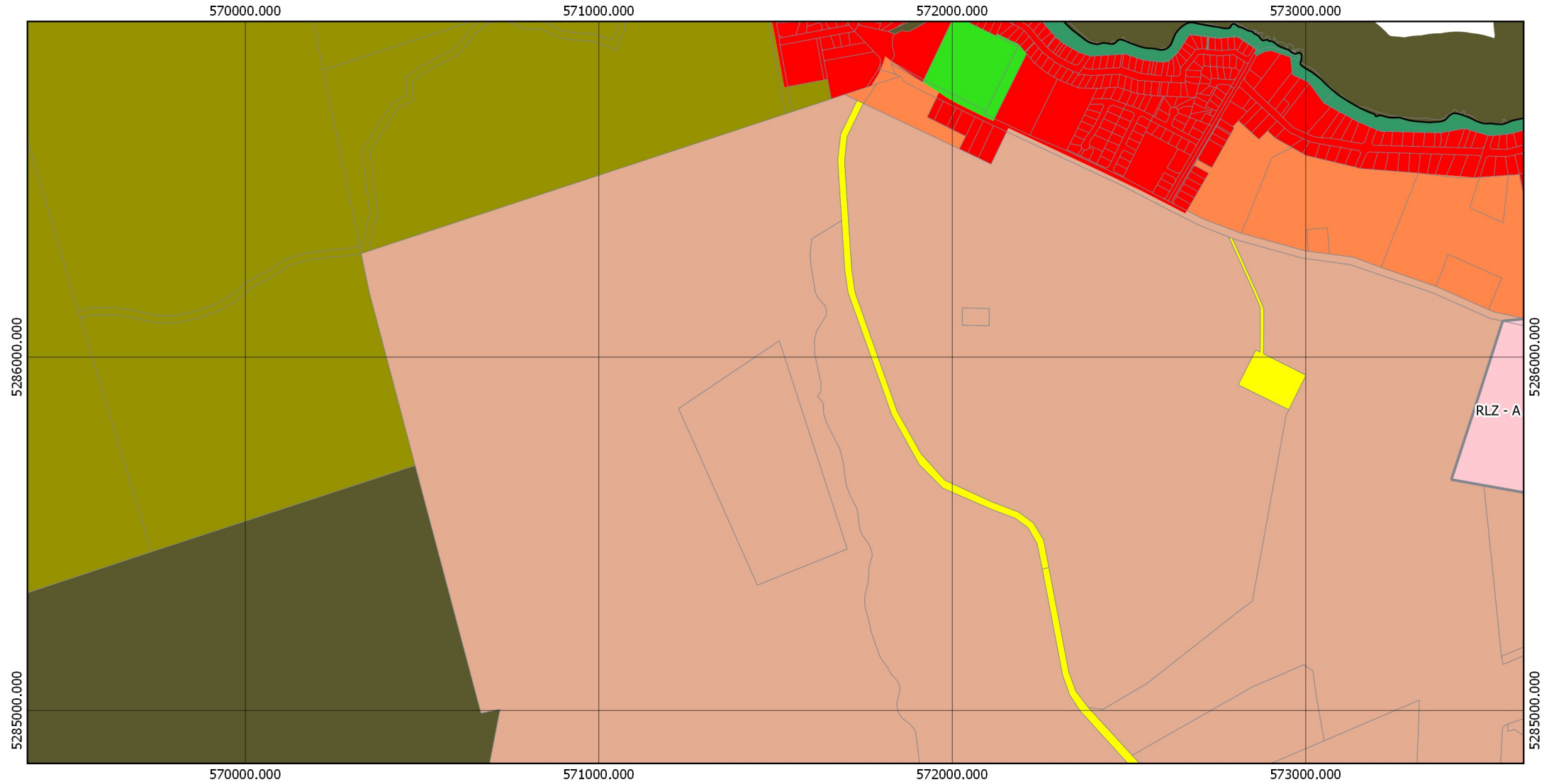
Base data from theLIST, © State of Tasmania  
Land title data current as of 26/09/2017

Disclaimer: Before taking any action based on  
data shown on this map, it should first be verified  
with the relevant council.

Date: 23/11/2017



# TASMANIAN PLANNING SCHEME - ZONES: GLAMORGAN-SPRING BAY LOCAL PROVISIONS SCHEDULE



## Legend

State Hwy	Rural Living B	Light Industrial	Future Urban
Property Parcels	Village	Rural	Particular Purpose (The Gulch)
LPS Boundary	Community Purpose	Agriculture	Particular Purpose (Dolphin)
General Residential	Open Space	Utilities	Particular Purpose (Sapphire)
Low Density Residential	Recreation	Landscape Conservation	Particular Purpose (Solis)
Rural Living A	Local Business	Environmental Management	Particular Purpose (Spring Bay)
	General Industrial	Major Tourism	

## Shelly Beach Map 19 of 22

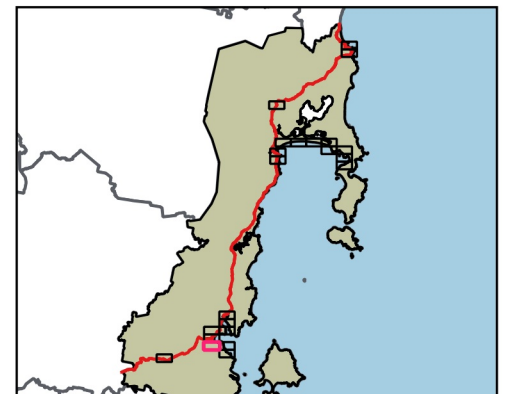
0 100 200 300 400 500 metres

Coordinate System: GDA 1994 MGA Zone 55

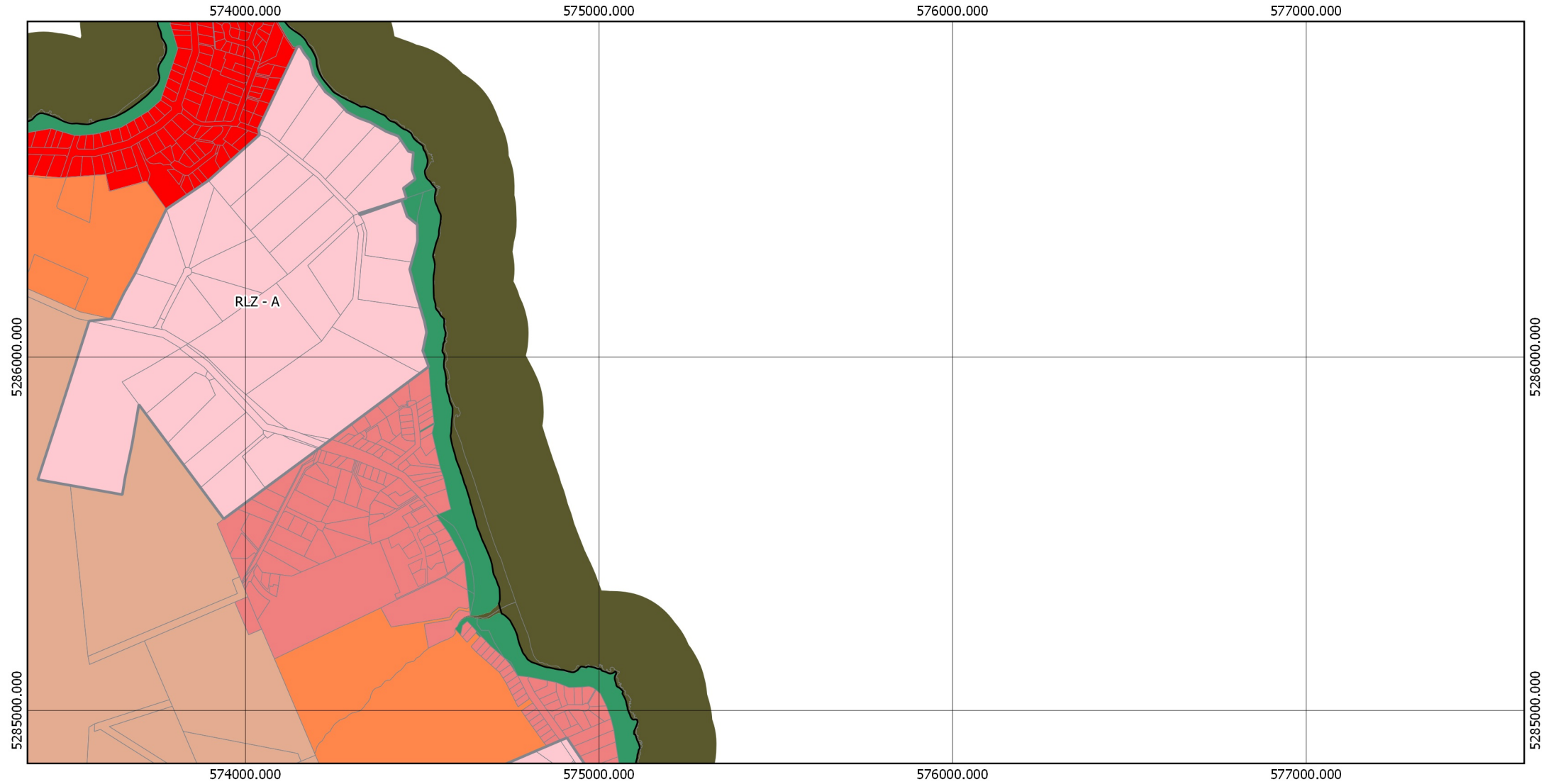
Base data from theLIST, © State of Tasmania  
Land title data current as of 26/09/2017

Disclaimer: Before taking any action based on  
data shown on this map, it should first be verified  
with the relevant council.

Date: 23/11/2017



# TASMANIAN PLANNING SCHEME - ZONES: GLAMORGAN-SPRING BAY LOCAL PROVISIONS SCHEDULE



## Legend

State Hwy	Rural Living B	Light Industrial	Future Urban
Property Parcels	Village	Rural	Particular Purpose (The Gulch)
LPS Boundary	Community Purpose	Agriculture	Particular Purpose (Dolphin)
General Residential	Open Space	Utilities	Particular Purpose (Sapphire)
Low Density Residential	Recreation	Landscape Conservation	Particular Purpose (Solis)
Rural Living A	Local Business	Environmental Management	Particular Purpose (Spring Bay)
	General Industrial	Major Tourism	

## Spring Beach Map 20 of 22

0 100 200 300 400 500 metres

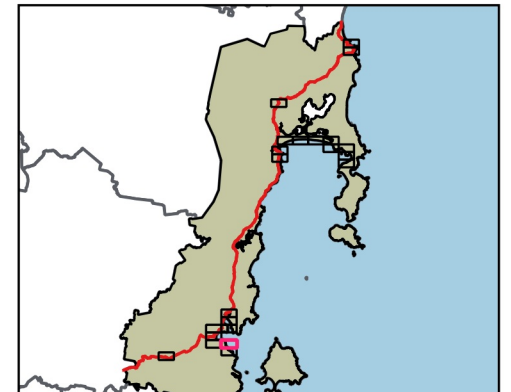


Coordinate System: GDA 1994 MGA Zone 55

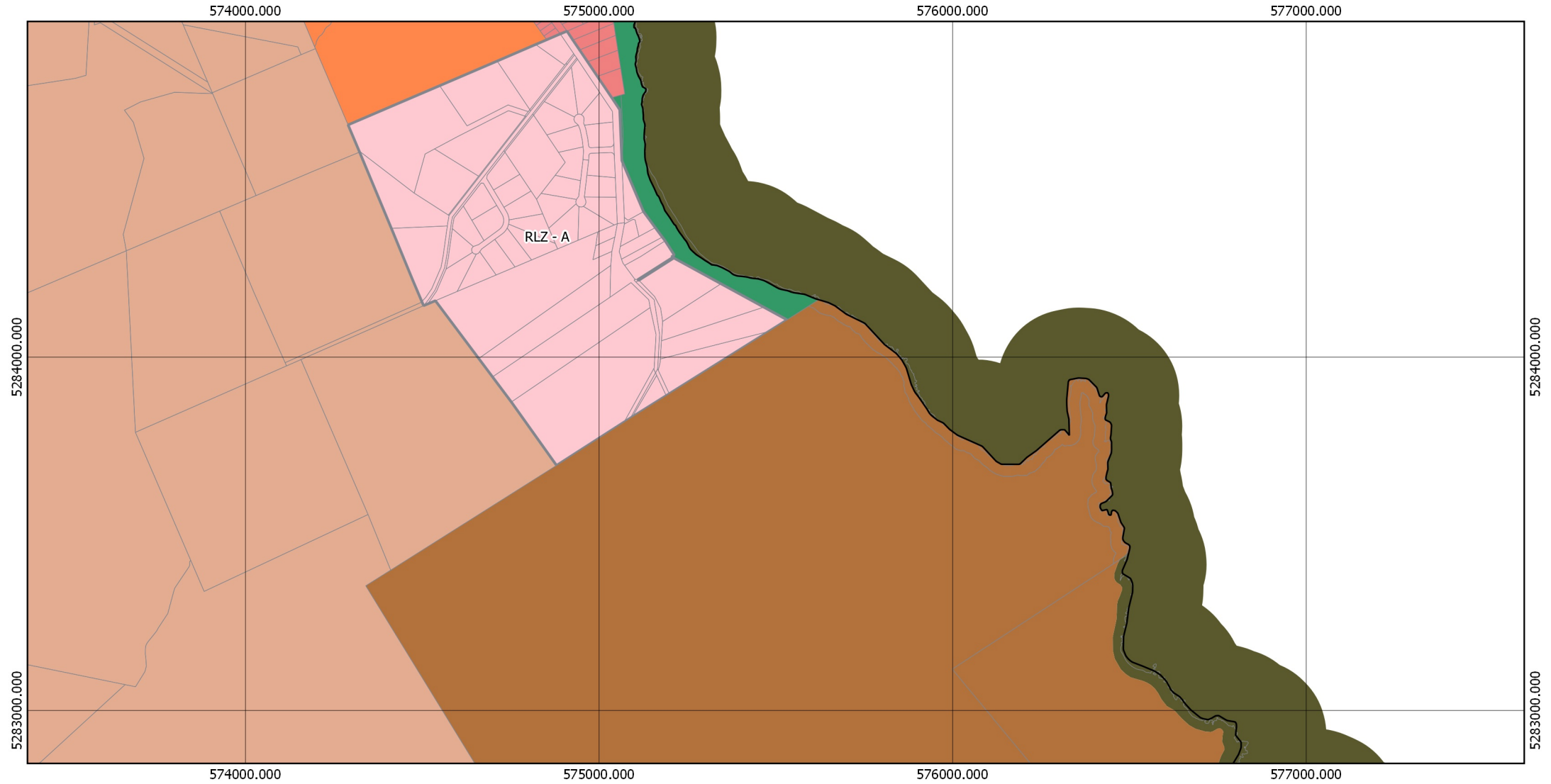
Base data from theLIST, © State of Tasmania  
Land title data current as of 26/09/2017

Disclaimer: Before taking any action based on data shown on this map, it should first be verified with the relevant council.

Date: 23/11/2017



# TASMANIAN PLANNING SCHEME - ZONES: GLAMORGAN-SPRING BAY LOCAL PROVISIONS SCHEDULE



## Legend

State Hwy	Rural Living B	Light Industrial	Future Urban
Property Parcels	Village	Rural	Particular Purpose (The Gulch)
LPS Boundary	Community Purpose	Agriculture	Particular Purpose (Dolphin)
General Residential	Open Space	Utilities	Particular Purpose (Sapphire)
Low Density Residential	Recreation	Landscape Conservation	Particular Purpose (Solis)
Rural Living A	Local Business	Environmental Management	Particular Purpose (Spring Bay)
	General Industrial	Major Tourism	

## Stapleton Beach Map 21 of 22

0 100 200 300 400 500 metres

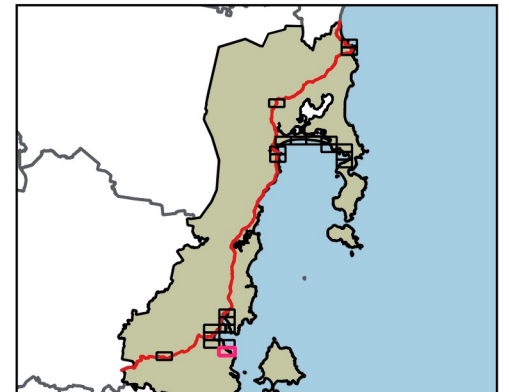


Coordinate System: GDA 1994 MGA Zone 55

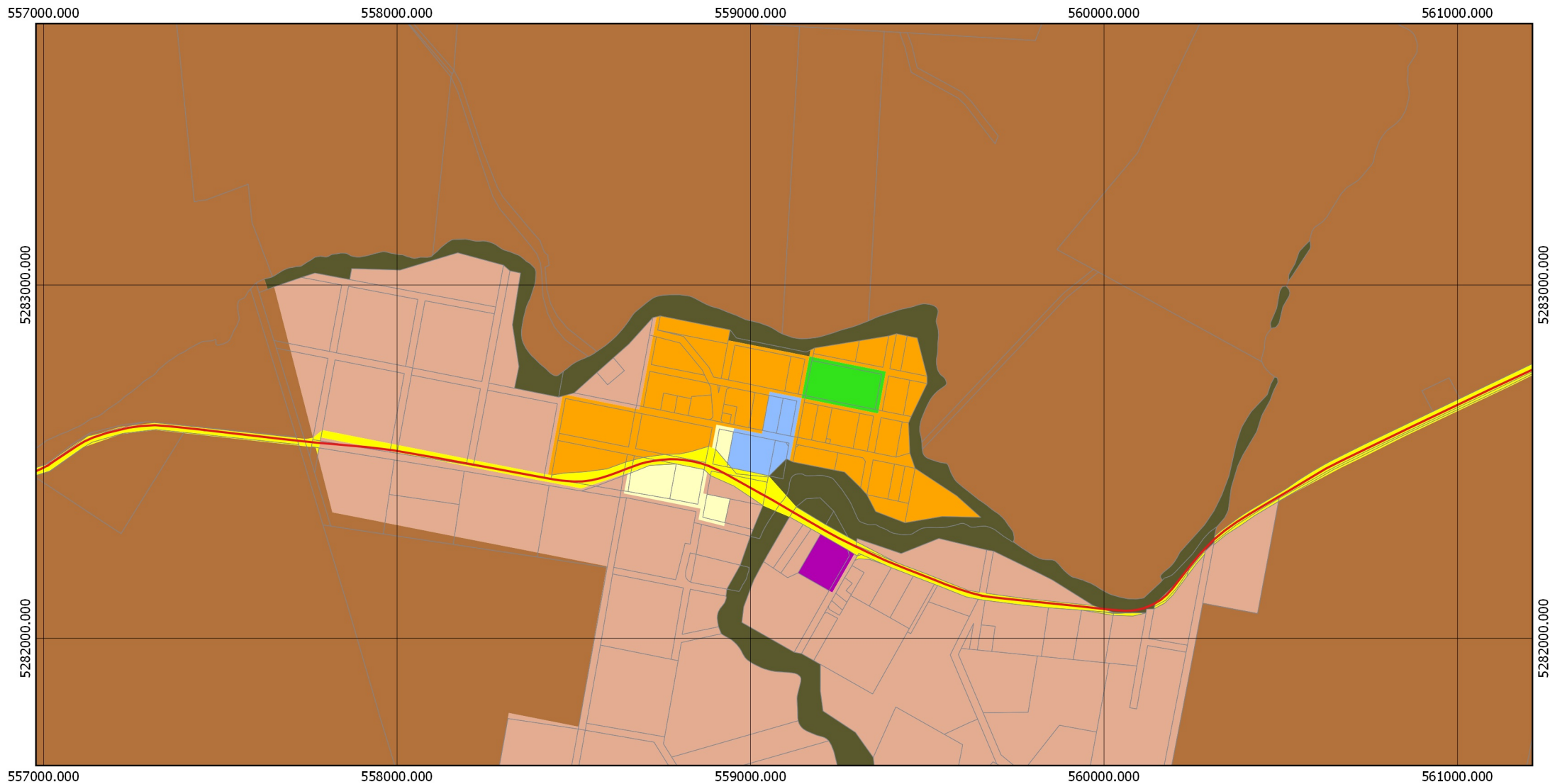
Base data from theLIST, © State of Tasmania  
Land title data current as of 26/09/2017

Disclaimer: Before taking any action based on data shown on this map, it should first be verified with the relevant council.

Date: 23/11/2017



# TASMANIAN PLANNING SCHEME - ZONES: GLAMORGAN-SPRING BAY LOCAL PROVISIONS SCHEDULE



## Legend

State Hwy	Rural Living B	Light Industrial	Future Urban
Property Parcels	Village	Rural	Particular Purpose (The Gulch)
LPS Boundary	Community Purpose	Agriculture	Particular Purpose (Dolphin)
General Residential	Open Space	Utilities	Particular Purpose (Sapphire)
Low Density Residential	Recreation	Landscape Conservation	Particular Purpose (Solis)
Rural Living A	Local Business	Environmental Management	Particular Purpose (Spring Bay)
General Industrial	Major Tourism		

## Buckland Map 1 of 22

0 100 200 300 400 500 metres

Coordinate System: GDA 1994 MGA Zone 55

Base data from theLIST, © State of Tasmania  
Land title data current as of 26/09/2017

Disclaimer: Before taking any action based on  
data shown on this map, it should first be verified  
with the relevant council.

Date: 23/11/2017

