

GLAMORGAN SPRING BAY COUNCIL

PUBLIC TOILET **STRATEGY** **2025-2035**



GLAMORGAN
SPRING BAY
COUNCIL

CONTENTS

Introduction:.....	3
The Process:	3
Background:.....	4
Demographic Analysis:	4
Community Survey Data.....	4
Key Findings:.....	4
Public Toilet Analysis.....	6
Existing Public Toilet Amenity Audit.....	7
Issue and Challenges	8
Distribution and Capacity.....	8
Access and Accessibility	8
Perceptions of safety	8
Management and Maintenance.....	8
Service Information	8
Strategic Framework:.....	9
Vision.....	9
Objectives Strategies and Actions	9
Implementation	10
Capital works.....	10
Design Standards.....	10
Asset Management and Maintenance	10
Public Toilet Data Base	10
Appendix 1.....	11
Public Toilet Amenity Assessment Data.....	11
Appendix 2.....	14

INTRODUCTION:

Glamorgan Spring Bay Council is committed to improving and building on our existing public infrastructure to ensure safe, convenient and comfortable use by the community and visitors to our municipality alike.

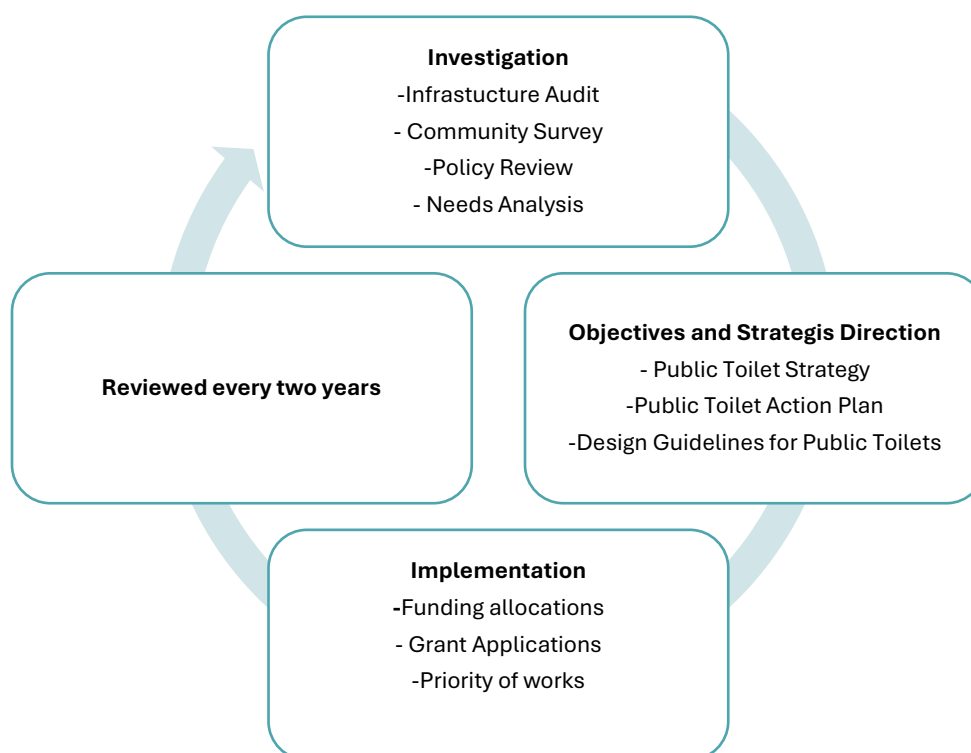
We know a key factor in achieving this goal requires strategic forecasting and planning regarding our approach to maintaining and upgrading existing facilities and implementing and designing new public toilets.

The purpose of developing this strategy is to ensure there are enough facilities that are of a safe, clean and useable standard for all persons to meet the community's needs, and that future planning and budgets include provisions for future public toilet facilities and the maintenance and upgrading of existing public toilets to meet the needs of a changing community.

The issues and opportunities addressed in this strategy are intended to inform a planned strategic approach for the development and effective management of public toilets over the next 10 years.

The strategy and action plan will be reviewed on a biannual basis to ensure that it stays up to date and that we are achieving our aims and objectives. The strategy commits the Council to improving and expanding our existing public toilet network throughout the municipality.

THE PROCESS:



BACKGROUND:

Asset audit data that is regularly undertaken by the works department identified that strategic planning for public toilets needed to be reviewed.

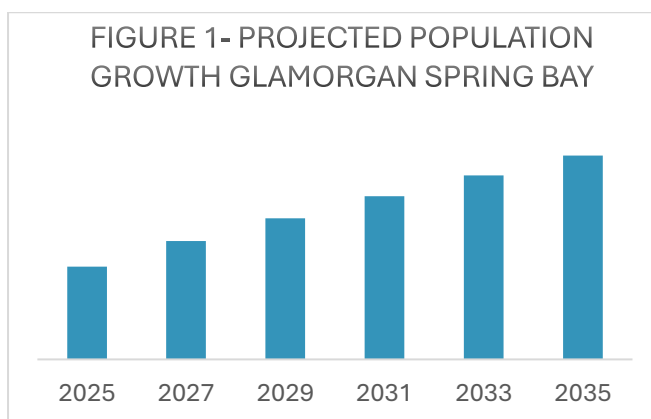
As a result, it was found that there has not been to date a strategic direction to guide Councils decisions in implementing, upgrading or renovating public toilets facilities across the municipality. Currently Council only has one policy that has regard to public toilets:

The Public Open Space Contributions Policy, 2021 –Contributions from developers are put towards the improvement of existing or new public open spaces which includes upgrading/ maintaining/ replacing or implementing new public toilets.

Further research into public toilet guidelines and other municipalities approaches to public toilet strategies and policies have been considered in the development of this document this strategy.

DEMOGRAPHIC ANALYSIS:

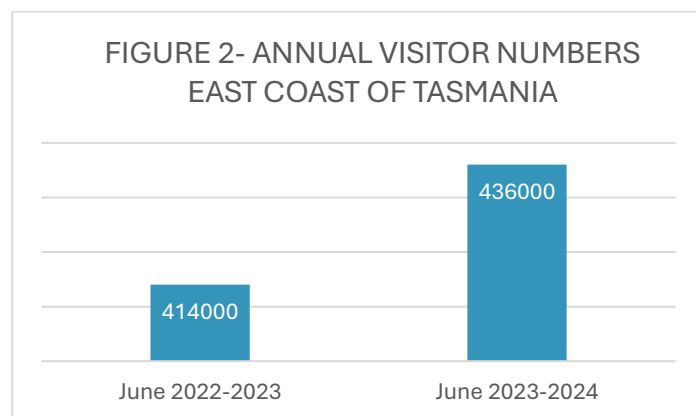
The Glamorgan Spring Bay municipality is currently home to 5,297 residents with the **most prominent age group being 65-69 years old**. A recent demographic survey compiled by RemPlan shows below the projected population growth for the region is expected the be slow and minimal



(RemPlan Website, 2024).

The East Coast of Tasmania is a tourism destination for many visitors to the state and is increasing in popularity year on year.

Glamorgan Spring Bay does not currently have statistics on the number of residents or visitors coming to the area who have a disability, however nationwide 21.4% of all residents in Australia have a disability and 53.2% of those over 65 according to ABS data.



(Tourism Tasmania, Tasmania Visitor Data, 2024)

COMMUNITY SURVEY DATA

Online Customer Survey, 2024 - Glamorgan Spring Bay Council conducted an online survey to gather insights into community perspectives on a Public Toilet Strategy. The survey, which ran for four weeks from Monday, February 19, until March 17, 2024, received 285 responses from participants, with 88.24% of respondents being permanent residents.

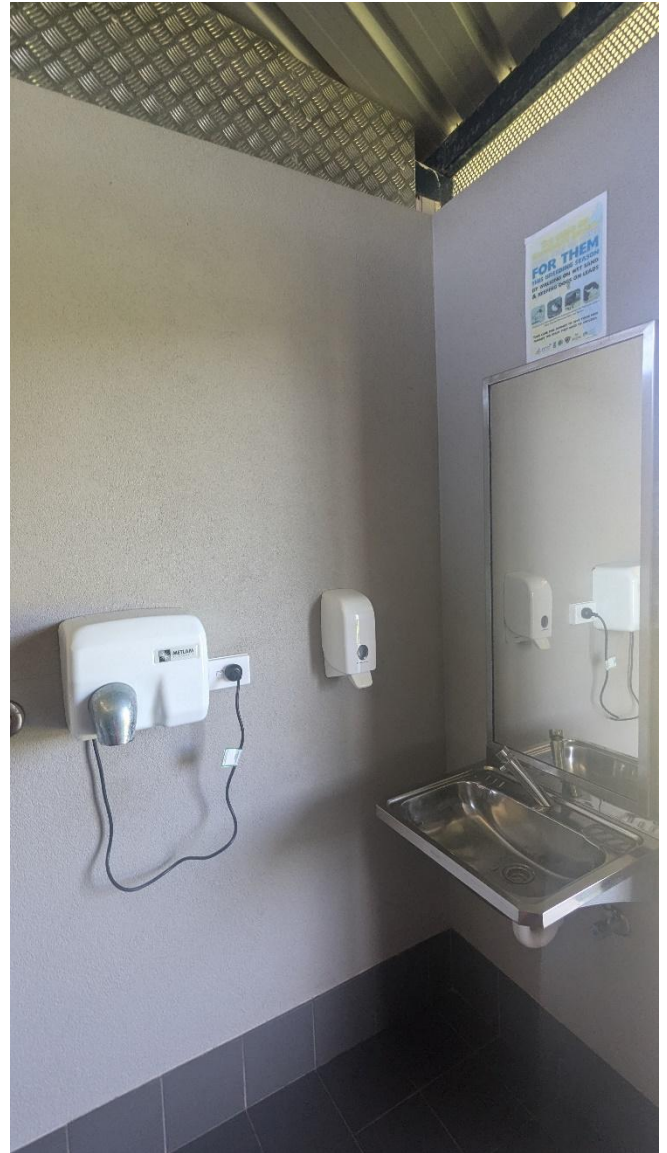
KEY FINDINGS:

- Generally, respondents agreed that public toilets were clean, well-presented, and in good condition.
- The availability of suitable public toilets was considered adequate by a significant portion of respondents.
- There were concerns about the lack of wheelchair/mobility scooter access and disability change facilities in public toilets.
- A notable proportion agreed that there were enough baby change facilities, but there were mixed opinions on the availability of unisex facilities.
- Satisfaction with the opening hours and information about public toilets was moderate. Respondents suggested better

signage for locating public toilets, both on the facilities themselves and in nearby streets.

- The most desired features in public toilets included assistance rails, baby change tables, unisex toilets, and natural light.
- There was significant support for the idea of painting murals on external public toilet walls.
- Redbill Beach in Bicheno was highlighted as an area urgently in need of public toilets due to high visitor numbers and environmental concerns.
- Other areas mentioned for improvement included the Bicheno Skate Park and various locations within Bicheno town centre.

Further detailed analysis of the survey can be found on the Council's website.



PUBLIC TOILET ANALYSIS

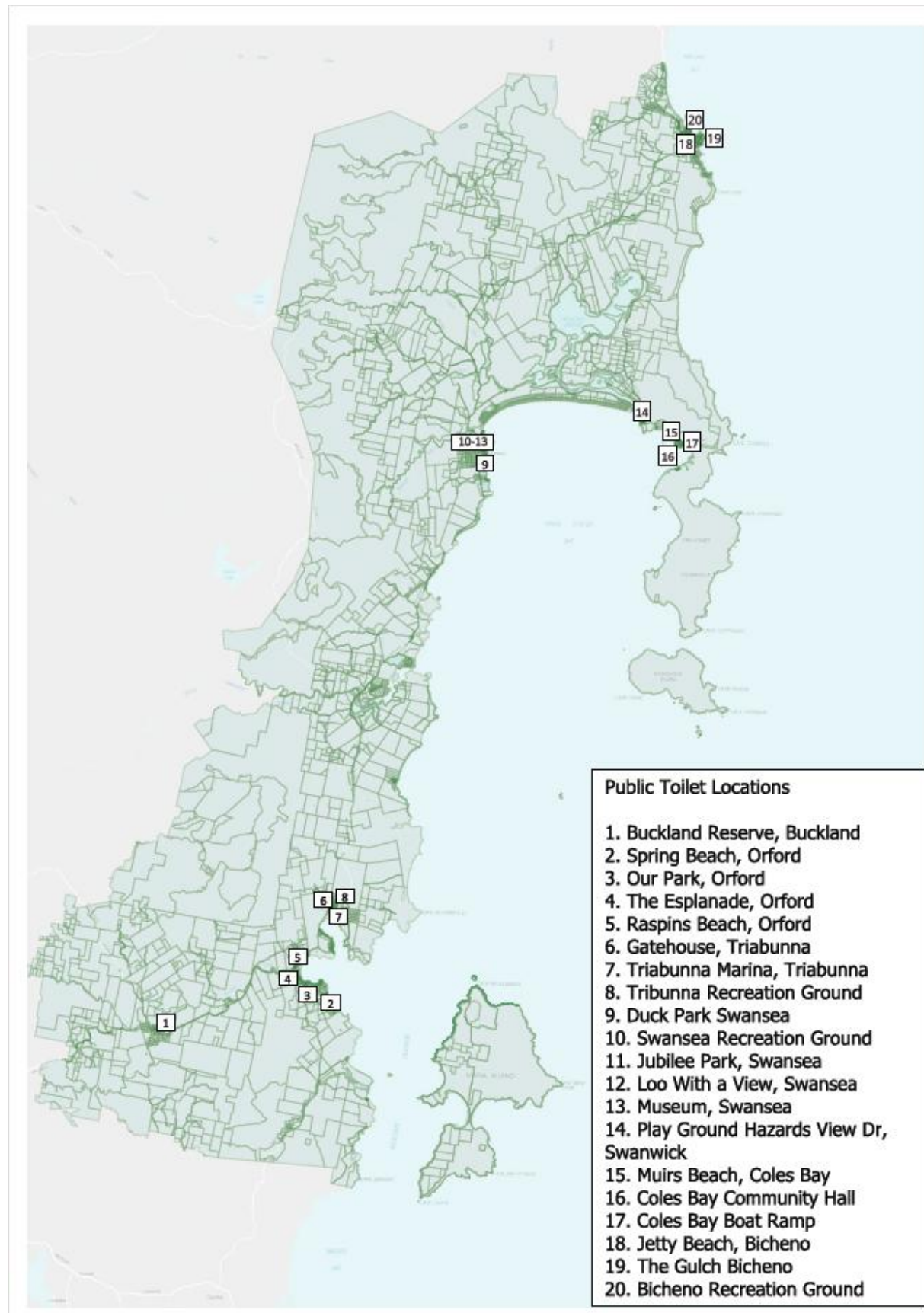
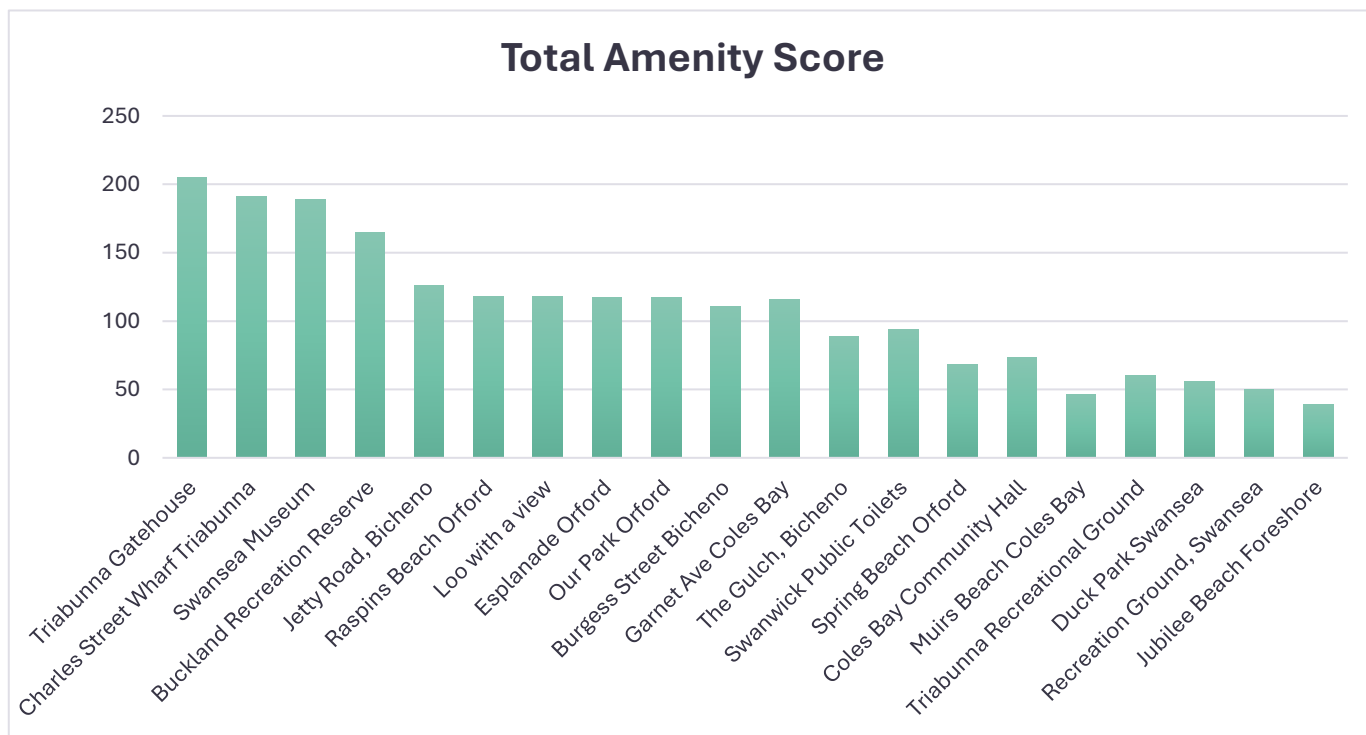


Figure 3 – Map of existing public toilets

EXISTING PUBLIC TOILET AMENITY AUDIT

An audit of the existing public toilet facilities was undertaken in 2023-2024 to identify the conditions and suitability of the facilities across the municipality to inform what is required for each facility and where there are gaps across the municipality in servicing the community.

Below is a table showing the total amenity score for each of the 19 public toilets, the highest score that could have been achieved was 260. Each of the toilets were assessed on six categories: signage, aesthetics, safety, sanitation, access and gender.



ISSUE AND CHALLENGES

DISTRIBUTION AND CAPACITY

- The current distribution of public toilets across the majority of the municipality adequately services the community and visitors to the area, but needs work and future planning to ensure that this level of amenity is improved and disability access meets the required standard across all facilities.
- The current level of amenity of the majority of public toilets does not meet the identified requirements of users.
- Some existing facilities have inadequate capacity to meet demand and some high demand areas do not have a facility within a viable walking distance for the users.

ACCESS AND ACCESSIBILITY

- 13 / 19 toilets have disabled facilities however many of those do not meet the current Disability Discrimination Act (DDA) requirements.
- Some public toilets are not well located and can be difficult to find.
- Some of the public toilets are not child or senior friendly.
- Some toilets have steps on entry or do not have a clear and flat path leading to the facility.

PERCEPTIONS OF SAFETY

- 10/19 toilets did not have visible accesses which was indicative of the public toilet failing to meet Crime Prevention Through Environmental Design (CPTED) guidelines significantly impacting perceptions of safety.
- Only 2/19 toilets had graffiti despite majority of the facilities not having been designed to be vandal proof.

MANAGEMENT AND MAINTENANCE

- Older facilities layouts and some of the newer facilities have used materials that compromises the ability to maintain and clean the facilities effectively.
- Many older facilities had peeling paint, damaged doors, rusting roof beams and door frames and general wear and tear.
- Some of the newer facilities such as the Gatehouse in Triabunna have exposed aggregate flooring which has proved difficult to clean.
- Despite regular cleaning older facilities can appear not to be clean due to the age of the facility and difficulty in adequately cleaning old brick and mortar surfaces.
- Ventilation and natural light in a number of older facilities was noted as an issue to be resolved to improve the amenity and perception of the facilities.
- Due to materials used and the age of some facilities the cost of maintaining them to a suitable standard is becoming cost prohibitive.

SERVICE INFORMATION

- Currently the Council is developing an interactive mapping system for public toilets within the municipality and the majority of toilets are listed on the National Toilet Map online.
- Site information such as cleaning regime and way finding signage are inconsistent and require improvement.

STRATEGIC FRAMEWORK:

VISION

Residents and visitors to Glamorgan Spring Bay will have access to a network of accessible, convenient, safe, clean and well-maintained public toilets to enhance our public areas.

OBJECTIVES STRATEGIES AND ACTIONS

Objective 1: Address Identified Demand and Service Gaps	
Strategy	<ul style="list-style-type: none"> Identify new facility provisions and requirements for upgrading existing facilities
Action Recommendation	<ul style="list-style-type: none"> Identify demand and key areas where public toilets are needed or require upgrading through the Public Toilet Audit, Customer Survey and existing Asset Management Plans.
Objective 2: Identify Design Standards	
Strategy	<ul style="list-style-type: none"> Identify minimum service provision requirements
Action Recommendation	<ul style="list-style-type: none"> Identify key service provision requirements in consultation with stakeholders. Develop a Public Toilet Designs Standards Guide to address all performance functions.
Objective 3: Identify Provision Actions and Priorities	
Strategy	<ul style="list-style-type: none"> Identifying key priority areas where there are service gaps to the community Adopt an action plan review process to ensure that plans and priorities are consistent with current and future needs.
Action Recommendation	<ul style="list-style-type: none"> Develop a strategic action plan with regards to improvements to existing public toilets and the provision of new toilet facilities.
Objective 4: Adopt Consistent Management Standards	
Strategy	<ul style="list-style-type: none"> Identify key management requirements
Action Recommendation	<ul style="list-style-type: none"> Implement having a cleaning roster at all facilities for transparency in cleaning scheduling. Monitor cleaning frequencies to ensure cleaning is appropriate to match level of use.
Objective 5: Provide accessible information regarding public toilets	
Strategy	<ul style="list-style-type: none"> Develop user friendly database for finding public toilet location online
Action Recommendation	<ul style="list-style-type: none"> Develop interactive mapping with all public toilets identified with associated facilities. Ensure that findings from asset audits are publicly available. Provide an online platform for community feedback. Continue to update the National Public Toilet Register.

IMPLEMENTATION

CAPITAL WORKS

The annual Capital Works Program will address service provisions and performance gaps with reference to:

- Identified strategic priorities within this document
- Annual Budget review process
- Strategic Asset Management Plan – Buildings 2023
- Review of proposed works and priorities in conjunction with capital works delivery.

DESIGN STANDARDS

The Council is committed to developing and improving public toilet facilities that are consistent with the Disability Discrimination Act, Crime Prevention Through Environmental Design (CPTED) Principles, Changing Places Toilets and designers to ensure that future facilities provide consistent and functional designs across the municipality moving forward and provide facilities that are safe, aesthetically appealing and have equal provisions for all users. To achieve this the Council will be developing Public Toilet Design Guidelines as one of the key outcomes of this strategy (see objective 2).

ASSET MANAGEMENT AND MAINTENANCE

Asset management and maintenance will be further developed with reference to:

- Council's Strategic Asset Management Plan – Buildings 2023
- Council's Public Toilet Action Plan
- Community Expectations

PUBLIC TOILET DATA BASE

- Provide a user-friendly interactive map on the Glamorgan Spring Bay Council website showing the location and address of all public toilets and the level of amenities at each facility.
- Update The National Public Toilets Map consistently.



APPENDIX 1

PUBLIC TOILET AMENITY ASSESSMENT DATA



	Signage									Aesthetics										Safety														
	Streets	Visibility	Standard format	Identifies facilities	Braille at entrances	Vandal proof	Open hours	Total signage	Avg Score for issue type	Building outside	Building inside	Inside appearance, comfort	Design layout	Natural light	Artificial light	Vandal proofing	Ventilation	Landscaping	Total cleanliness	Avg Score	Visible entrances	Outside lighting	Not secluded	Hiding places	Visual barrier	On street/car park	High traffic area	Cubicle/door gaps	Vestibule	Non-slip floors	Space round doors	Safe shared space	Total Safety	Avg Score
Triabunna Gatehouse	5.0	5.0	5.0	3.0	5.0	5.0	5.0	33.0	4.7	5.0	5.0	5.0	5.0	5.0	5.0	5.0	5.0	5.0	45.0	5.0	5.0	5.0	5.0	5.0	5.0	5.0	5.0	5.0	5.0	5.0	5.0	60.0	5.0	
Charles Street Wharf Triabunna	5.0	5.0	5.0	5.0	0.0	5.0	5.0	30.0	4.3	5.0	5.0	5.0	5.0	5.0	5.0	5.0	5.0	5.0	45.0	5.0	5.0	5.0	5.0	5.0	5.0	5.0	5.0	5.0	5.0	5.0	5.0	60.0	5.0	
Swansea Museum	0.0	0.0	3.0	5.0	5.0	5.0	5.0	23.0	3.3	5.0	5.0	5.0	5.0	5.0	5.0	5.0	5.0	5.0	45.0	5.0	5.0	5.0	5.0	5.0	3.0	5.0	5.0	5.0	5.0	5.0	5.0	58.0	4.8	
Buckland Rec Reserve	5.0	5.0	5.0	3.0	5.0	5.0	5.0	33.0	4.7	5.0	5.0	5.0	5.0	4.0	4.0	5.0	5.0	5.0	43.0	4.8	3.0	5.0	3.0	3.0	3.0	4.0	4.0	5.0	5.0	5.0	5.0	5.0	50.0	4.2
Jetty Road, Bicheno	5.0	5.0	5.0	5.0	5.0	5.0	5.0	35.0	5.0	5.0	3.0	2.0	3.0	3.0	3.0	1.0	3.0	3.0	26.0	2.9	3.0	5.0	5.0	3.0	3.0	5.0	5.0	3.0	3.0	5.0	5.0	3.0	48.0	4.0
Raspins Beach Orford	5.0	5.0	0.0	3.0	0.0	5.0	5.0	23.0	3.3	1.0	1.0	1.0	5.0	3.0	5.0	5.0	5.0	5.0	31.0	3.4	3.0	5.0	5.0	3.0	1.0	5.0	5.0	1.0	3.0	3.0	1.0	3.0	38.0	3.2
Loo with a view	5.0	5.0	5.0	5.0	5.0	3.0	5.0	33.0	4.7	5.0	5.0	3.0	5.0	5.0	5.0	3.0	5.0	5.0	41.0	4.6	5.0	5.0	5.0	5.0	5.0	5.0	5.0	5.0	5.0	5.0	5.0	60.0	5.0	
Esplanade Orford	3.0	3.0	3.0	5.0	5.0	5.0	5.0	29.0	4.1	3.0	3.0	3.0	3.0	5.0	5.0	3.0	5.0	5.0	35.0	3.9	1.0	1.0	1.0	1.0	1.0	5.0	3.0	5.0	3.0	3.0	3.0	5.0	32.0	2.7
Our Park Orford	5.0	5.0	3.0	4.0	0.0	3.0	5.0	25.0	3.6	1.0	1.0	1.0	1.0	3.0	3.0	3.0	5.0	5.0	23.0	2.6	1.0	1.0	5.0	3.0	3.0	5.0	5.0	1.0	1.0	1.0	1.0	3.0	30.0	2.5
Burgess Street Bicheno	5.0	5.0	5.0	5.0	0.0	3.0	5.0	28.0	4.0	3.0	1.0	1.0	1.0	3.0	3.0	3.0	1.0	5.0	21.0	2.3	1.0	5.0	5.0	1.0	1.0	5.0	5.0	1.0	1.0	3.0	1.0	3.0	32.0	2.7
Garnet Ave Coles Bay	3.0	5.0	5.0	3.0	0.0	5.0	5.0	26.0	3.7	5.0	5.0	5.0	5.0	3.0	5.0	3.0	3.0	5.0	39.0	4.3	5.0	5.0	5.0	5.0	5.0	5.0	5.0	5.0	5.0	5.0	5.0	60.0	5.0	
The Gulch, Bicheno	5.0	5.0	5.0	5.0	5.0	5.0	5.0	35.0	5.0	4.0	3.0	3.0	5.0	3.0	3.0	1.0	3.0	5.0	30.0	3.3	3.0	3.0	3.0	3.0	3.0	3.0	3.0	5.0	4.0	5.0	5.0	5.0	45.0	3.8
Swanwick Public Toilets	0.0	3.0	5.0	5.0	0.0	3.0	5.0	21.0	3.0	5.0	5.0	5.0	5.0	5.0	5.0	3.0	5.0	5.0	43.0	4.8	5.0	5.0	5.0	5.0	5.0	5.0	5.0	5.0	5.0	5.0	5.0	60.0	5.0	
Spring Beach Orford	0.0	0.0	0.0	0.0	0.0	0.0	5.0	5.0	0.7	1.0	3.0	3.0	3.0	5.0	5.0	3.0	3.0	3.0	29.0	3.2	1.0	1.0	1.0	1.0	1.0	3.0	1.0	0.0	0.0	0.0	1.0	10.0	0.8	
Coles Bay Community Hall	3.0	5.0	3.0	5.0	0.0	3.0	5.0	24.0	3.4	1.0	1.0	1.0	3.0	5.0	5.0	3.0	5.0	3.0	27.0	3.0	1.0	1.0	5.0	1.0	1.0	5.0	5.0	3.0	1.0	1.0	3.0	3.0	30.0	2.5
Muirs Beach Coles Bay	0.0	3.0	5.0	5.0	0.0	3.0	5.0	21.0	3.0	1.0	1.0	1.0	3.0	5.0	5.0	1.0	3.0	5.0	25.0	2.8	1.0	1.0	1.0	1.0	1.0	5.0	5.0	3.0	1.0	1.0	3.0	1.0	24.0	2.0
Triabunna Rec Ground	3.0	1.0	5.0	1.0	0.0	5.0	5.0	20.0	2.9	1.0	1.0	1.0	1.0	1.0	1.0		1.0	1.0	8.0	1.0	3.0	1.0	1.0	1.0	1.0	1.0	1.0	3.0	3.0	3.0	1.0	22.0	1.8	
Duck Park Swansea	3.0	3.0	3.0	3.0	5.0	0.0	5.0	22.0	3.1	1.0	1.0	1.0	3.0	3.0	3.0	3.0	5.0	3.0	23.0	2.6	1.0	1.0	5.0	3.0	0.0	5.0	5.0	1.0	1.0	5.0	1.0	1.0	29.0	2.4
Recreation Ground, Swansea	5.0	3.0	3.0	1.0	0.0	3.0	5.0	20.0	2.9	0.0	0.0	1.0	3.0	3.0	3.0	3.0	1.0	3.0	17.0	1.9	0.0	1.0	1.0	0.0	0.0	3.0	3.0	1.0	1.0	1.0	1.0	3.0	15.0	1.3
Jubilee Beach Foreshore	4.0	5.0	5.0	5.0	0.0	1.0	5.0	25.0	3.6	3.0	1.0	0.0	3.0	3.0	1.0	1.0	3.0	2.0	17.0	1.9	3.0	1.0	3.0	1.0	1.0	3.0	3.0	1.0	1.0	1.0	1.0	3.0	22.0	1.8
Avg for issue	3.5	3.8	3.9	3.8	2.0	3.6	5.0		3.8	3.0	2.8	2.6	3.6	3.9	4.0	3.1	3.8	4.2		3.6	2.8	3.1	3.7	2.8	2.4	4.4	4.2	3.2	2.9	3.4	3.2	3.5		3.4

	Sanitation											Access					Access Issues										Gender					
	Disposal units F	Disposal units M	Sharps disposal	Finishes and fixtures	Hand drying	Off-floor options	Hands-free	Baby change	Soap dispenser	Total Sanitation	Avg Score	Wheelchair access M&F	Ambulant M&F	Compliant	Total Access	Avg Score	Door width	Cubicle space	Transfer space	Grab rails	Handbasin	One hand lock	Access path	Ramp handrails	Other	Equal facilities	Unisex toilets	Baby change M&F	Total gender	Avg Score	TOTAL SCORE	
Triabunna Gatehouse	5.0	5.0	5.0	5.0	5.0	3.0	3.0	5.0	3.0	39.0	4.3	5.0	5.0	5.0	15.0	5.0										5.0	5.0	3.0	13.0	4.3	67.0	
Charles Street Wharf Triabunna	5.0	5.0	0.0	3.0	5.0	1.0	1.0	0.0	5.0	25.0	2.8	5.0	5.0	5.0	15.0	5.0										5.0	5.0	5.0	15.0	5.0	55.0	
Swansea Museum	5.0	5.0	0.0	5.0	5.0	3.0	0.0	5.0	5.0	33.0	3.7	5.0	5.0	5.0	15.0	5.0										5.0	5.0	5.0	15.0	5.0	63.0	
Buckland Recreation Reserve	5.0	0.0	0.0	3.0	5.0	0.0	3.0	0.0	5.0	21.0	2.3	5.0	5.0	5.0	15.0	5.0								x		3.0	0.0	0.0	3.0	3.0	39.0	
Jetty Road, Bicheno	5.0	0.0	0.0	3.0	3.0	0.0	0.0	0.0	3.0	14.0	1.6	3.0	4.0	0.0	7.0	2.3			x				x			3.0	0.0	0.0	3.0	3.0	17.0	
Raspins Beach Orford	5.0	0.0	5.0	3.0	5.0	0.0	0.0	0.0	5.0	23.0	2.6	0.0	0.0	0.0	0.0	0.0	x	x	x	x	x	x	x	x		3.0	0.0	0.0	3.0	2.0	26.0	
Loo with a view	5.0	5.0	5.0	5.0	5.0	0.0	3.0	0.0	5.0	33.0	3.7	5.0	5.0	5.0	15.0	5.0										5.0	5.0	0.0	10.0	3.3	58.0	
Esplanade Orford	5.0	0.0	0.0	3.0	5.0	0.0	0.0	0.0	5.0	18.0	2.0	0.0	0.0	0.0	0.0	0.0	x	x	x	x	x	x	x	x		3.0	0.0	0.0	3.0	3.0	21.0	
Our Park Orford	5.0	0.0	3.0	5.0	5.0	0.0	3.0	0.0	5.0	26.0	2.9	0.0	3.0	0.0	3.0	1.0			x	x				x		3.0	0.0	0.0	3.0	1.0	21.0	
Burgess Street Bicheno	5.0	0.0	0.0	3.0	3.0	0.0	0.0	0.0	3.0	14.0	1.6	5.0	5.0	0.0	10.0	3.3	x	x				x				3.0	3.0	0.0	6.0	6.0	30.0	
Garnet Ave Coles Bay	5.0	5.0	0.0	5.0	5.0	5.0	3.0	0.0	3.0	31.0	3.4	5.0	5.0	5.0	15.0	5.0										5.0	5.0	0.0	10.0	3.3	56.0	
The Gulch, Bicheno	5.0	5.0	0.0	3.0	3.0	0.0	0.0	0.0	3.0	19.0	2.1	5.0	5.0	5.0	15.0	5.0										5.0	5.0	0.0	10.0	3.0	44.0	
Swanwick Public Toilets	0.0	0.0	0.0	5.0	5.0	0.0	1.0	0.0	3.0	14.0	1.6	5.0	5.0	5.0	15.0	5.0			x				x	x		5.0	0.0	0.0	5.0	1.7	34.0	
Spring Beach	0.0	0.0	0.0	5.0	5.0	0.0	3.0	3.0	5.0	21.0	2.3	0.0	0.0	0.0	0.0	0.0										3.0	0.0	0.0	3.0	2.0	24.0	
Coles Bay Community Hall	5.0	0.0	3.0	3.0	3.0	5.0	0.0	0.0	3.0	22.0	2.4	5.0	5.0	5.0	15.0	5.0										3.0	3.0	0.0	6.0	6.0	43.0	
Muirs Beach Coles Bay	5.0	0.0	0.0	3.0	5.0	0.0	3.0	0.0	3.0	19.0	2.1	0.0	0.0	0.0	0.0	0.0	x	x	x	x	x	x	x	x	x	3.0	0.0	0.0	3.0	3.0	22.0	
Triabunna Recreational Ground	0.0	1.0	0.0	1.0	0.0	1.0	1.0	0.0	0.0	4.0	0.4	0.0	0.0	0.0	0.0	0.0	x	x	x	x	x	x	x	x		3.0	0.0	0.0	3.0	3.0	7.0	
Duck Park Swansea	5.0	0.0	0.0	3.0	3.0	0.0	0.0	0.0	3.0	14.0	1.6	5.0	5.0	0.0	10.0	3.3		x	x	x						3.0	0.0	0.0	3.0	3.0	27.0	
Recreation Ground, Swansea	5.0	0.0	0.0	3.0	3.0	0.0	0.0	0.0	3.0	14.0	1.6	5.0	5.0	5.0	15.0	5.0										3.0	3.0	0.0	6.0	6.0	35.0	
Jubilee Beach Foreshore	5.0	0.0	0.0	3.0	3.0	0.0	0.0	0.0	3.0	14.0	1.6	0.0	0.0	0.0	0.0	0.0	x	x	x	x	x	x	x	x	x	3.0	0.0	0.0	3.0	3.0	17.0	
Avg for issue	4.3	1.6	1.1	3.6	4.1	0.9	1.2	0.7	3.7			3.2	3.4	2.5	9.5											3.7	2.0	0.7	6.6		37.2	

APPENDIX 2

LOCATION / NAME	PHOTO	COMMENTS
<p>Buckland Reserve</p>		<p>Relatively new facility no structural or amenity improvements identified.</p>
<p>Raspins Beach</p>		<p>The toilet block is older and needs to be upgraded, the surfaces are difficult to clean and it has a rundown appearance that detracts from the area.</p>

Spring Beach



This facility is small and not easily identified, it has had some recent works and serves beach goers effectively however, has not been designed with accessibility or CPTED principles in mind. The mural helps to soften the grey brick façade.

Our Park, Orford



The facility has been awkwardly placed in the park and causes viewing obstructions between park equipment. It is an older facility however it currently provides a good level of amenity to the park.

Esplanade, Orford



The facility has recently had some upgrades including the mural, it is an older facility which is lacking in amenity and was not developed with CPTED principles in mind. The painting mural does help to soften the traditional square grey look of older facilities.

Gatehouse, Triabunna



Gatehouse has all the required amenities however, does have some structural downfalls including aggregate flooring that needs to be fixed.

Marina, Triabunna



The demountables are proposed to be replaced and are intended to be reused somewhere else in the municipality. They are well designed and provide a good level of amenity.

Triabunna Recreation Ground



This facility is very poor and aesthetically detracts from the area, it provides the barest minimum of amenity.

Duck Park, Swansea



The facility services the park well and provides a good level of amenity and no immediate improvements were identified.

Swansea Recreation Ground



Facility is becoming run down and has poor ventilation, however is in a good location to service the recreation ground and near by businesses. The facility has had ongoing works done to it, but could benefit with a significant renovation or replacement.

Jubilee Park, Swansea



These toilets work in conjunction with the 'loo with a view'. They are an interesting placement and design and provide a good level of amenity to Jubilee Park and foreshore users, they could be updated and improved with additional amenities.

Loo with a View, Swansea



The facility provides a high level of amenity and provides a disability compliant toilet that adheres to CPTED principles. However, has ongoing issues with the flushing system which the works department have been rectifying.

Swansea Museum



The toilets provide a good level of amenity for museum users, there is no sign outside of the museum to show the facilities are available to the public.

**Hazards View Dr,
Swanwick**



This facility provides a good level of amenity however despite being disability compliant there is no flat, level path to the facility for people using wheel chairs or walking aids.

Muir's Beach, Coles Bay



The toilet aesthetically detracts from the area and is reaching the end of the facilities life cycle and is in need of replacement.

Coles Bay Community Hall



The facility has had ongoing issues with the septic system that are currently being addressed by the works department. Otherwise provides a good level of amenity.

Coles Bay Boat Ramp



High level of amenity and located in a high use area.
Is relatively modern and meets CPTED principles.

The Gulch, Bicheno



The front of the toilets could have more
transparency to provide better passive surveillance
of the area, otherwise they provide a good level of
amenity and service to most people.

Jetty Beach, Bicheno



The toilets are potentially being upgraded / replaced depending on level of funding secured. The facility internally is very dated and run down and has poor ventilation.

Bicheno Recreation ground



The disabled access toilet requires people to go past the entry to the female toilets and the walls screening the entry into the toilets causes a potential safety issue, the toilets are older but service the recreational ground adequately.



Glamorgan Spring Bay Council

9 Melbourne Street, Triabunna 7190

6256 4777

www.gsbc.tas.gov.au

admin@freycinet.tas.gov.au