

Glamorgan Spring Bay Council has approved its Budget Estimates for the 2022-23 financial year that includes an \$6.95 million capital program that invests in the future of the municipality.

The budget focus is to ensure continuation of normal services at a level expected by our community.

This budget includes capital works priorities that are guided by comprehensive Asset Management Plans and includes road renewal projects, continuation of Grant funded projects such as Swansea main street footpath renewal, Coles Bay Foreshore Track, the Gulch Bicheno and the Bicheno Triangle. Numerous smaller capital works for buildings, stormwater and parks are also among the projects included.

Council has faced significant challenges in the recent past, including the financial impact of COVID-19 and rising costs for services which has contributed to a projected operating loss of \$0.506 million in the coming financial year. Importantly, the Council has maintained alignment with the 2021 Council approved Long-Term Financial Management Plan providing a roadmap to deal with financial challenges and restore sustainability to protect provision of services and community assets for the coming years.

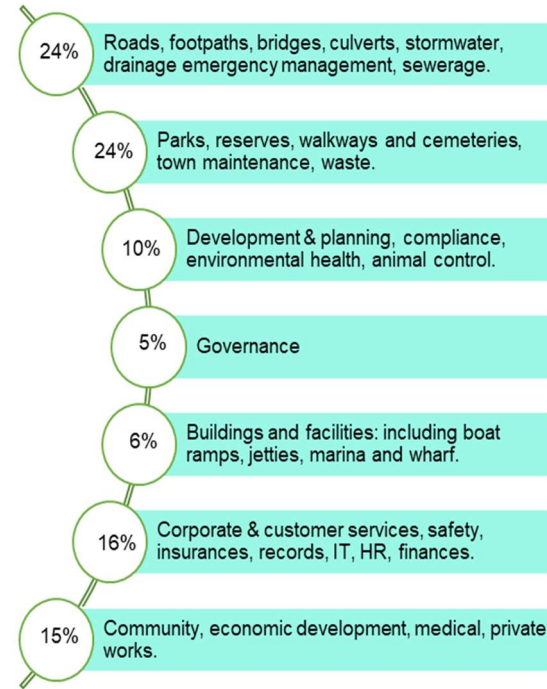
Council offers support for payment of rates via remissions for eligible concession card holders, as well as community groups. The Council also offers financial hardship assistance for individuals experiencing genuine and serious financial hardship.

More information on the budget for 2022-23 and the Capital works program can be found on Council's website.

Greg Ingham
GENERAL MANAGER

RATES SNAPSHOT

A snapshot of how general rates will be allocated in 2022/23:



CAPITAL WORKS PROJECTS FOR 2022/23

New Capital Projects	\$4,252,200
Roads, Footpaths, Kerbs	1,168,200
Stormwater & Drainage	242,000
Parks, Reserves, Tracks, Cemeteries	2,735,000
Buildings & Facilities	107,000
Renewal of Assets	\$2,700,159
Roads, Footpaths, Kerbs	981,400
Parks, Reserves, Tracks, Cemeteries	162,000
Stormwater & Drainage	157,000
Marine Infrastructure	219,123
Buildings & Facilities	380,636
Bridges & Culverts	436,000
Plant & Equipment	319,000
Medical and IT equipment	45,000
TOTAL CAPITAL WORKS	6,952,359

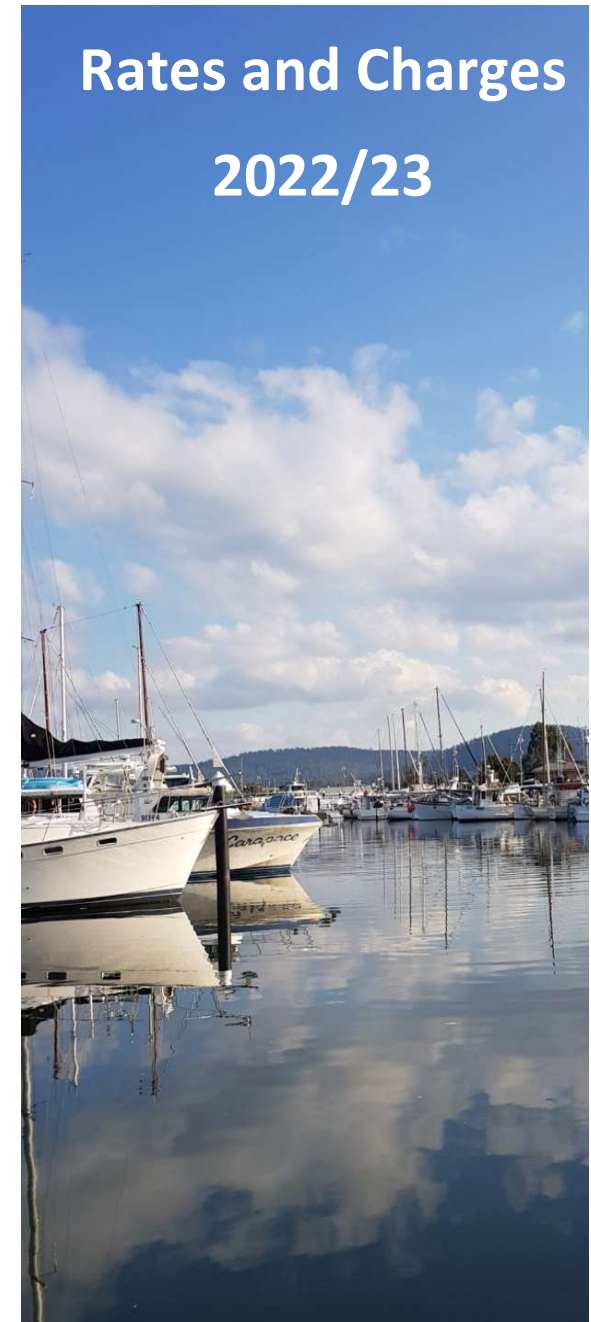


Photo: "Triabunna Marina"

Rates and Charges

2022/23

RATES AND CHARGES 2022/23

The following is general information only. A copy of the complete rating resolution can be obtained from Councils' website.

GENERAL RATES 2022/23	CENTS IN AAV (¢)
General Rate Residential	5.121
General Rate Primary Production	5.121
General Rate Sport and Recreation	5.121
General Rate Vacant Residential or Other Vacant Land	5.121
General Rate Commercial	10.18
General Rate Vacant Commercial	10.18
General Rate Industrial	10.18

GENERAL FIXED CHARGE	\$330.00
-----------------------------	----------

WASTE MANAGEMENT CHARGES	DOLLARS (\$)
General Waste Management	105.00
Residential Waste Collection	111.00
Commercial Waste Collection	250.00

FIRE LEVY (a minimum rate of \$42.00 applies)	CENTS IN AAV (¢)
Urban Fire Rate	0.3255500
Rural Fire Rate	0.3736000

MEDICAL LEVY	\$90.00
---------------------	---------

INSTALMENT DUE DATES

Rates are due in full by 31 August 2022 or in four instalments on:

- (1) 31 August 2022
- (2) 30 November 2022
- (3) 28 February 2023
- (4) 30 April 2023

HOW RATES ARE CALCULATED

Rates are calculated based on each property's Valuation together with the General Charge, Medical Levy and Waste Management Charges. Council uses the Assessed Annual Value (AAV) valuation base which is a notional value of the property determined by the Office of the Valuer General (OVG), who determine values on property (land, capital and assessed annual value) in Tasmania. A full revaluation occurs every six years and in between revaluations values are index adjusted every two years. Glamorgan Spring Bay municipality properties were

revalued as of 10 January 2017 (applied from 1 July 2017). Enquiries regarding a property's valuation should be directed to the OVG on (03) 6165 4444 or refer to State Department of Natural Resources and Environment Tasmania/Land/OVG.

GENERAL RATE AND CHARGE

The General Rate (including the General Charge) is levied to fund a range of Council services such as maintaining roads buildings and stormwater, planning, health compliance and recreation. The rate is applied to all rateable land in the municipal area except properties which are specifically exempt by statute.

WASTE BASE LEVY

The Waste Management Base Levy is for the overall management of waste including gate fees per tonne for all collected waste delivered to the Copping independent landfill facility. These fees also include State Government landfill levies which fund State Government waste minimization initiatives.

WASTE SERVICE CHARGE

The Waste Collection charge is for kerbside garbage collection service including provision of recycling service for residential properties. There is a separate collection for commercial properties. Where kerbside collection cannot be provided a waste transfer station voucher is provided. A property owner may make an application for additional services to their property and rates will be adjusted accordingly.

FIRE SERVICES RATE

The State Fire Services Rate is collected on behalf of the State Government to contribute towards the funding of the Fire Commission and is applied based on various fire districts.

MEDICAL SERVICE CHARGE

The Medical Service Charge is to cover the incentives paid to health professionals for providing services and to cover the costs of operating the two medical practices in the Municipality that are not covered by Medicare rebates, grants, and other user fees. This enables Council to attract and retain health professionals in the municipal area.

ADJUSTMENT TO RATES

Property values can change when alterations to a property occurs, for example when a new house is constructed on a block of land. These changes are referred to as supplementary valuations. After a supplementary valuation, rates are recalculated from the date of occupancy, first sale date for vacant land or the date of inspection by the OVG.

PENSIONER REMISSIONS

Ratepayers who hold a Pensioner Concession Card, Health Care Card, Veterans' Affairs Gold Card (TPI) or War Widow/Widower DVA Card on 1 July 2022 and meet State Government criteria may be eligible for a rate remission. For more information refer to Council's website or contact Council.

CHANGE OF ADDRESS OR DETAILS

Please notify Council of any changes to contact information for your property as soon as possible so that Council records are correct. Download a *Change of Address form* from Council's website or contact Council. When buying or selling a property, the Titles Office will notify the Council of the change of ownership when the transaction is complete. Council can only update the records when formal notification is received from Land Titles Office.

EMAIL OF RATES NOTICE

Council offers the service to email rates notices to you instead of a paper. Register at gsbc.enotices.com.au with the reference number printed on the bottom of your latest rates notice.

DIRECT DEBIT AND PAYMENT ARRANGEMENTS

Payment arrangements through Direct Debit are available to enable rates payments on a weekly, fortnightly, monthly or installment basis. Application forms can be found on Council's website or contact Council.

LATE PAYMENT

Any rate instalment that has not been paid by its due date attracts interest of 8.13 percent per annum applied daily to any outstanding amounts. Interest is included on the next instalment notice under Section 124 (5) of the *Local Government Act 1993* and if any instalment is not paid within 21 days, the full amount for the year may become due and payable immediately.

Ratepayers having difficulty paying their rates by the due dates should contact the Council on 03 6256 4777 as early as possible. The Council may be able to provide assistance through a payment arrangement.

COUNCIL OFFICE CONTACT INFORMATION

9 Melbourne St, Triabunna
PO Box 6, Triabunna TAS 7170
T: 03 6256 4777

E: general: admin@freycinet.tas.gov.au

E: rates: rates@freycinet.tas.gov.au

W: www.gsbc.tas.gov.au