

Front

Back



x3 980x600mm double sided signs

EYE SPY®

Job No. 60447
East Coast Tourism 20/3/2018

WARNING
PLEASE PROOF CAREFULLY

Every effort has been made to ensure your artwork is correct and error free. HOWEVER, mistakes can happen! The final responsibility for the checking of spelling and layout rests with you - the client. Please carefully check.

- Spelling
- Layout
- Size
- Colours
- Quantities
- Materials

Authority to Proceed:

Date

Name

Signature

PLEASE NOTE

*Colours may vary between the proposed artwork and the completed job due to printing/manufacturing process. To manufacture your job you **MUST** complete this form and send back via email.*

Front

Back



x3 980x600mm double sided signs

EYE SPY®

Job No. 80447
East Coast Tourism 20/3/2018

WARNING
PLEASE PROCEED CAREFULLY

Every effort has been made to ensure your artwork is correct and error free. HOWEVER, mistakes can happen! The final responsibility for the checking of spelling and layout rests with you - the client. Please carefully check:

- Spelling
- Layout
- Size
- Colours
- Quantities
- Materials

Authority to Proceed:

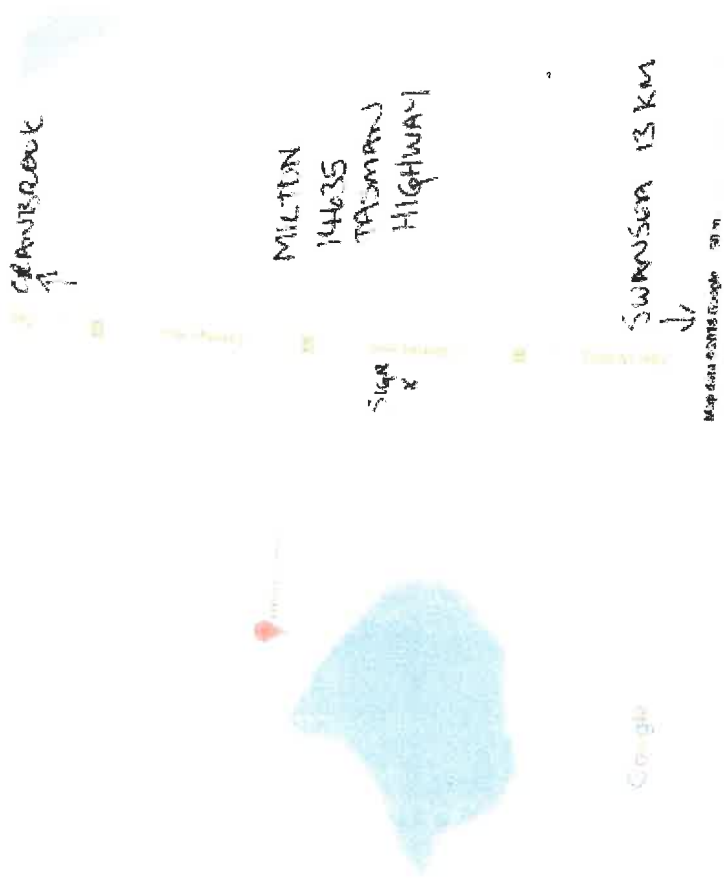
Date

Name

Signature

PLEASE NOTE

Colours may vary between the proposed artwork and the completed job due to printing/manufacturing process. To manufacture your job you **MUST** complete this form and send back via email.





Freestone Creek

Glen-Gain Rd

Tasman Hwy

Gala Estate Vineyard

Tasman Hwy

Cranbrook
Tasmania 7190
-42.005501, 148.066983



Google Maps

WILL BE UNDER TREES.

Craigie Knowe Vineyard 80 Glen Gala Road, Cranbrook. 7190 Great East Wine Drive signage

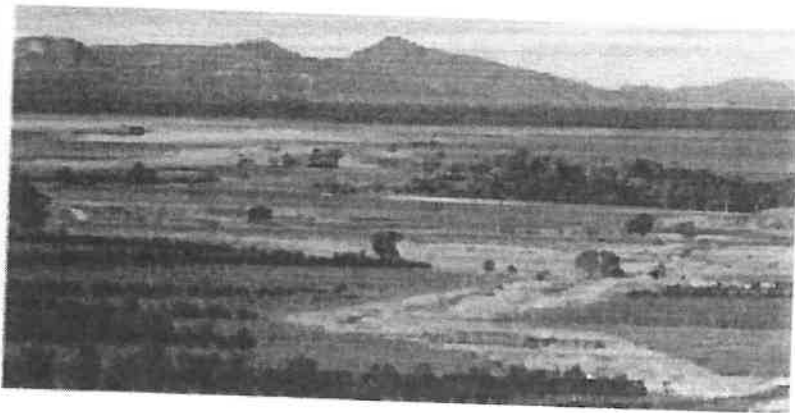


Imagery ©2018 DigitalGlobe, Map data ©2018 Google 20 m

Google Maps Devil's Corner Cellar Door



Map data ©2018 Google 100 mi



Devil's Corner Cellar Door

4.5 ★★★★★ · 49 reviews

Winery

📍 1 Sherbourne Road, Apslawn TAS 7190

🌐 devilscomer.com.au

☎️ (03) 6257 8881

🕒 Open now: 10am–5pm ▼

Popular times Fridays ▼



Google

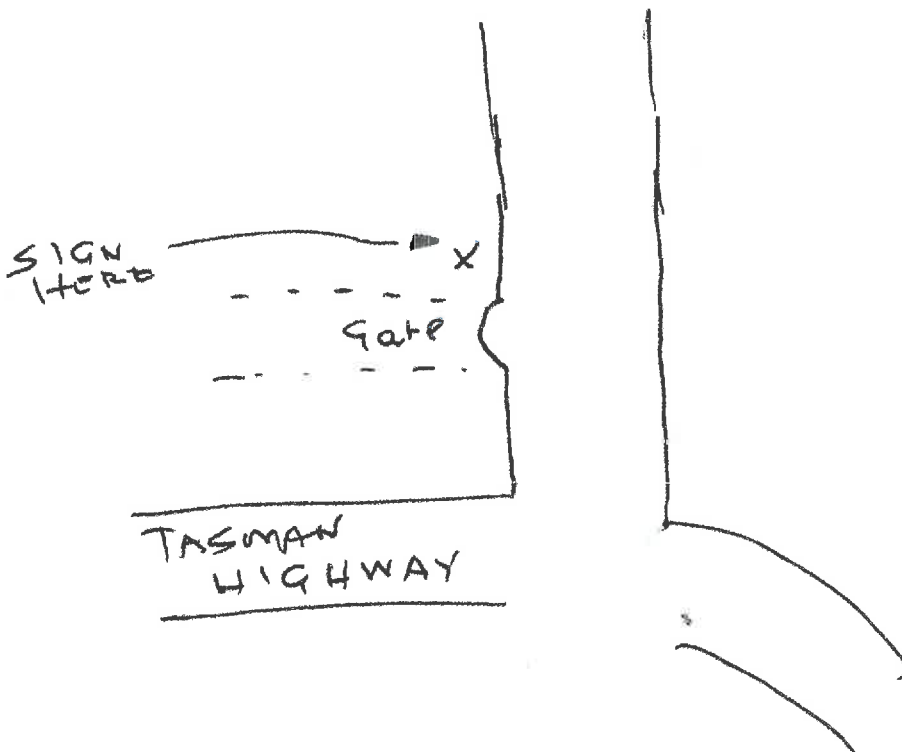
RECEIVED
BY: 4 APR 2018



SIGN
HERE

Further explanation:

CEVIA
DPP



ON VERGE
JUST AFTER
GATE IN
FRONT
Paddock