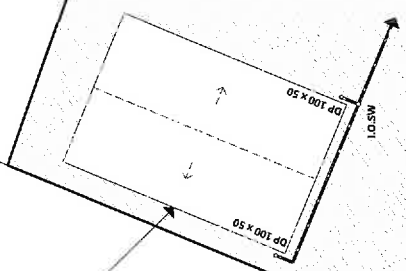




PROPOSED STORMWATER POINTS FROM SHED TO CONNECT INTO EXISTING MAINS



RECTORY STREET

34.21m

34.92m

30.18m

30.18m

#RBSG502
SHEET: 3
DATE: 27/7/17
SCALE: 1:200

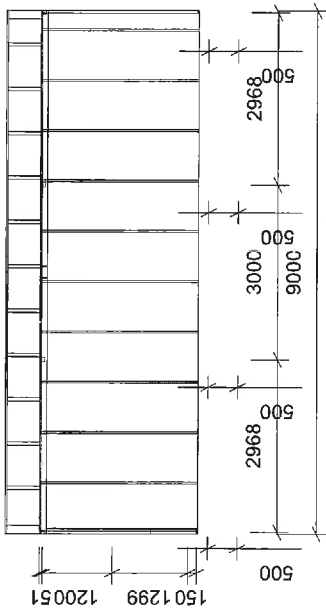
DODGE & MACKINTOSH
PROPOSED DRAINAGE PLAN

PROPOSED DODGE & MACKINTOSH SHED
3 RECTORY STREET,
SWANSEA, TASMANIA 7190

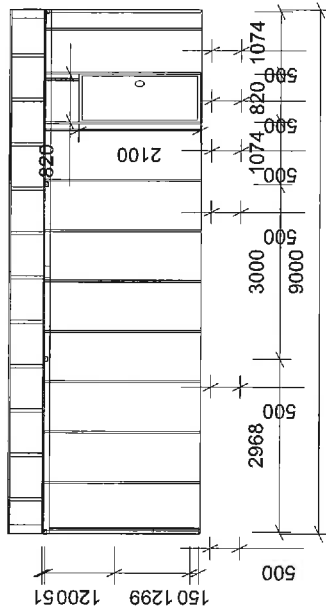
DRAWN: N Valentine
CERT: CC 5180 Y
REVISION: A

R A I N B O W
building solutions
139 Main Road Spall, TAS 7172 www.rainbowbuilding.com.au P: 1300 737 310

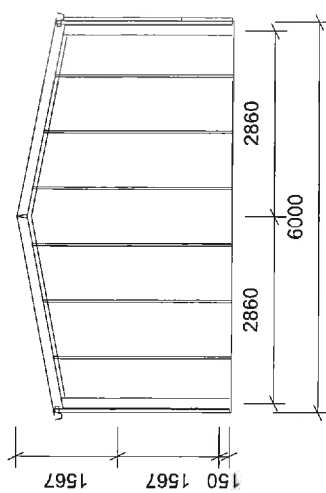
© 2017 RAINBOW BUILDING SOLUTIONS PTY LTD. ALL RIGHTS RESERVED. THIS DOCUMENT IS THE PROPERTY OF RAINBOW BUILDING SOLUTIONS PTY LTD. AND IS NOT TO BE REPRODUCED OR TRANSMITTED IN ANY FORM OR BY ANY MEANS, ELECTRONIC OR MECHANICAL, INCLUDING PHOTOCOPYING, RECORDING, OR BY ANY INFORMATION STORAGE AND RETRIEVAL SYSTEM.



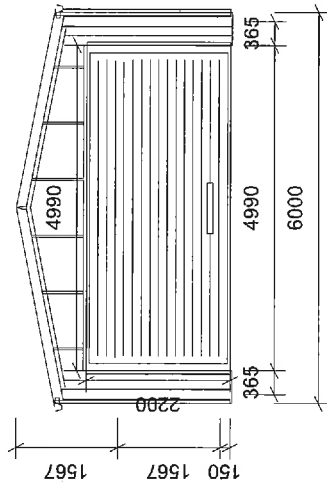
FRONT VIEW



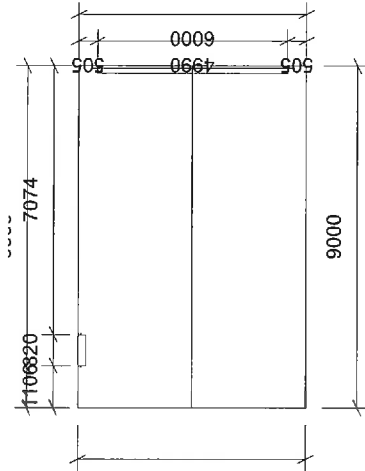
BACK VIEW



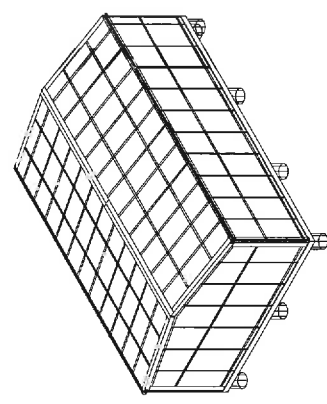
LEFT VIEW



RIGHT VIEW

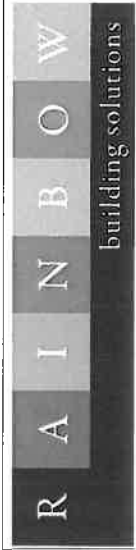


PLAN VIEW



ISO FRONT LEFT VIEW

Elevation Multiview



Erin Dodge & Ian Mackintosh
3 Rectory Street
Swansea TAS 7190

Dwg No 7 of 14

Project No. SOR01_7348

6.0 x 9.0 x 2.7m shed

Erin Dodge & Ian Mackintosh

18/7/2017

Scale NA

